

Ambient Air and Sound

Monthly Report

STONEY TRAIL AGGREGATE RESOURCE

BURNCO

LAFARGE



Volker Stevin
Contracting Ltd.

Heidelberg
Materials

April 2024

Glossary

- L_{eq}** - Equivalent Continuous Sound Pressure Level. The total sound energy logged over the course of a measurement. (Uses logarithmic averaging).
- L_{eq24}** - Measured over the entire 24-period (00:00 – 23:59)
- L_{eqDay}** - Measured over the daytime period (07:00 – 22:00)
- L_{eqNight}** - Measured over the nighttime period (22:00 – 07:00)
- SPL (dBA)** - Sound Pressure Level in dBA (A-weighted, which is corrected for human hearing)
- TSP** - Total Suspended Particulate Matter. Includes particulates with a diameter of greater than 10 micrometers and smaller.
- PM_{2.5}** - Particulate Matter with a diameter of 2.5 micrometers and smaller.

1.0 SOUND LEVEL MEASUREMENT RESULTS

The results of the sound monitoring at the STAR Pit can be found in Table 1. Table 1 provides the daily averaged L_{eq24} , L_{eqDay} and $L_{eqNight}$ sound levels in addition to the minimum and maximum L_{eq24} values.

Table 1. April 2024 – STAR PIT – Sound Monitoring Results¹

Day	Leq24	L _{eq} Min	L _{eq} Max	LeqDay	LeqNight
Monday 01-Apr-24	No Data				
Tuesday 02-Apr-24	No Data				
Wednesday 03-Apr-24	No Data				
Thursday 04-Apr-24	No Data				
Friday 05-Apr-24	No Data				
Saturday 06-Apr-24	No Data				
Sunday 07-Apr-24	No Data				
Monday 08-Apr-24	No Data				
Tuesday 09-Apr-24	No Data				
Wednesday 10-Apr-24	51.7	40.7	56.8	52.1	50.1
Thursday 11-Apr-24	47.4	36.1	52.3	45.2	48.7
Friday 12-Apr-24	45.4	34.0	50.3	48.5	38.0
Saturday 13-Apr-24	43.1	34.5	51.4	39.0	44.0
Sunday 14-Apr-24	53.0	35.0	59.1	52.1	53.5
Monday 15-Apr-24	50.1	32.7	56.9		50.1
Tuesday 16-Apr-24	50.9	38.6	55.1	54.6	48.7
Wednesday 17-Apr-24	No Data				
Thursday 18-Apr-24	52.5	44.4	54.3	53.7	50.7
Friday 19-Apr-24	52.3	45.4	55.8	51.5	53.5
Saturday 20-Apr-24	39.0	34.6	43.5		39.0
Sunday 21-Apr-24	37.8	35.1	38.1		36.8
Monday 22-Apr-24	No Operations				
Tuesday 23-Apr-24	49.9	46.6	51.7	50.5	48.0
Wednesday 24-Apr-24	48.3	43.9	51.7	48.3	48.3
Thursday 25-Apr-24	47.7	45.8	50.9		47.7
Friday 26-Apr-24	54.8	45.0	58.6	53.8	56.3
Saturday 27-Apr-24	40.8	39.2	42.0	42.0	39.2
Sunday 28-Apr-24	33.1	32.1	33.9		33.1
Monday 29-Apr-24	49.3	48.3	50.2	49.3	
Tuesday 30-Apr-24	No Operations				
Monthly Average	47.1	39.6	50.7	49.3	46.2
Monthly Maximum	54.8	48.3	59.1	54.6	56.3
Monthly Minimum	33.1	32.1	33.9	39.0	33.1

¹ It should be noted that all measured sound levels provided in Table 1 are for instances in which the wind speeds were below 11 km/hr and rainfall was below 3mm/hr, as both conditions will impact the validity of the measured results. As such, it is possible that there will time periods/days in which there is no valid data.

Figure 1 provides the graphical representation of the results found in Table 1. Figure 2 illustrates the hourly average, maximum and minimum Leq dBA values for the entire month. In addition, the City of Calgary’s Community Standards Bylaw values have been included.

Lastly, it is important to note that the monitoring stations are located inside the perimeter berms, adjacent to operations and not beyond the site boundaries. Measurements are intended to help monitor and measure the internal operations performance and are not representative of the lower offsite levels.

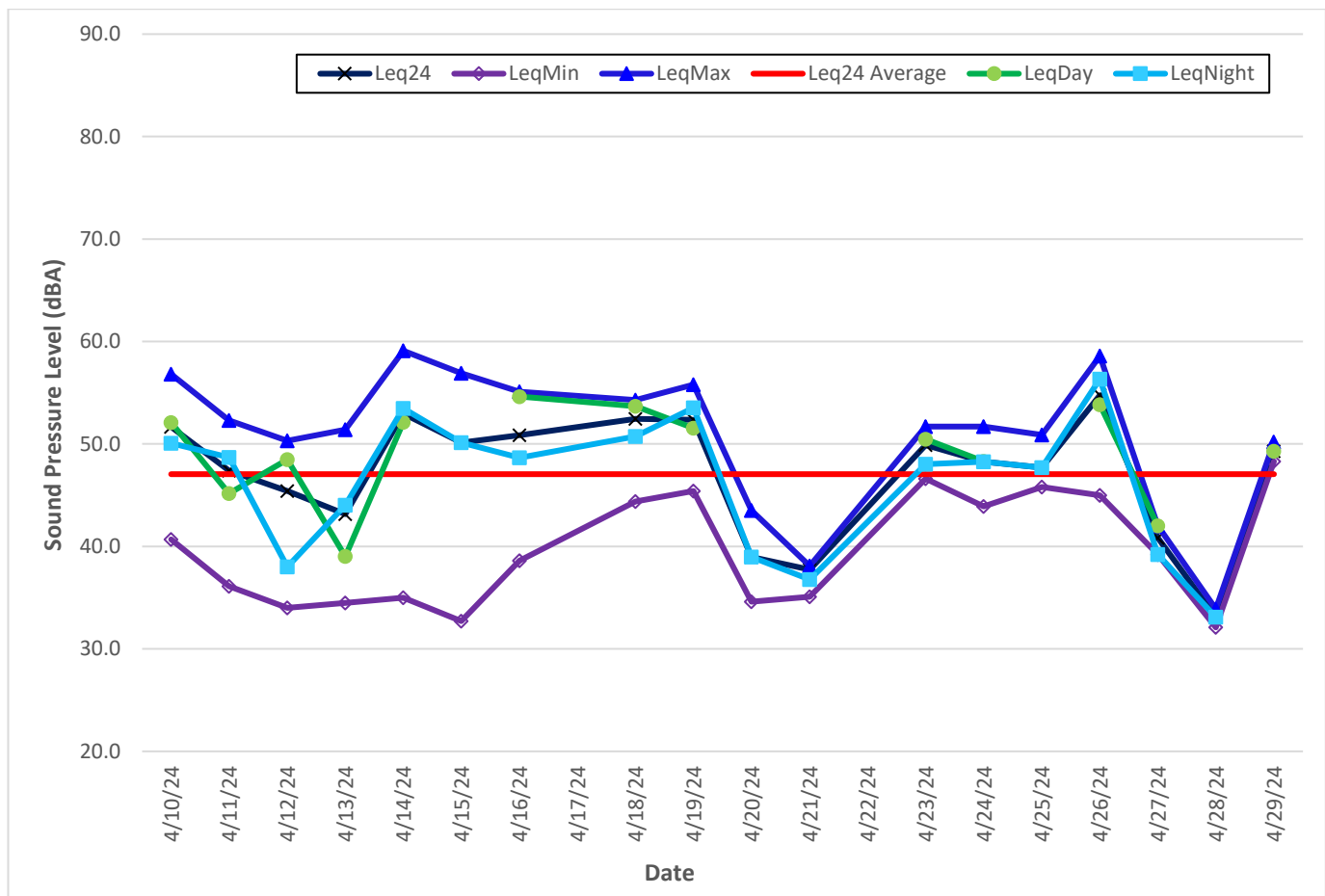


Figure 1. STAR PIT – April 2024 – Daily Sound Monitoring Results²

² Values of 30 were given to dates in which there was no data. This was to allow for the creation of the graph. The values within Table 1 are correctly calculated ignoring the dates of no data (due to wind or rain).

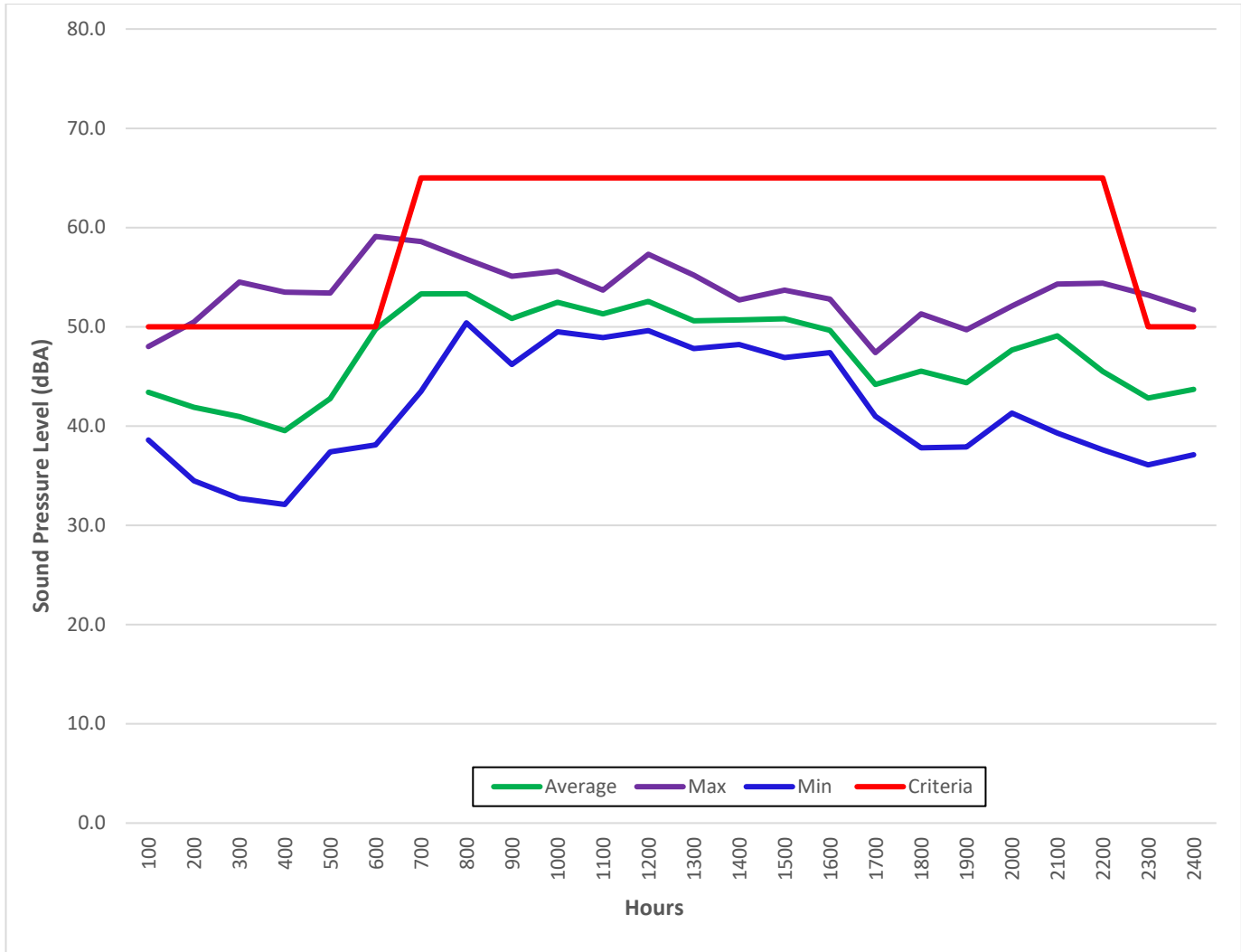


Figure 2. STAR PIT – April 2024 – Hourly Sound Monitoring Summary

2.0 SOUND LEVEL EXCEEDANCES

As per the development permit, the permissible sound level for this site is 50 dBA $L_{eq-1Hour}$ for the nighttime and 65 dBA $L_{eq-1Hour}$ for the daytime hours. As shown in Table 2, from April 9 to April 30, 2024 there were 13 exceedances.

Table 2. STAR PIT – April 2024 – Sound Level Exceedances

Date	$L_{eq-1-hour}$ (dBA)	Wind Speed (Km/hr)	Temperature (°C)	Wind Direction	Hourly Rainfall (mm)	Day/Night
Apr-10-2024 00:00	51.7	10.9	0.1	North-West	0.00	Night
Apr-11-2024 03:00	50.7	9.9	0.9	North	0.00	Night
Apr-14-2024 06:00	59.1	6.7	1.0	North-West	0.00	Night
Apr-15-2024 06:00	56.9	10.1	6.6	North-West	0.00	Night
Apr-16-2024 06:00	52.7	2.9	-1.5	North-East	0.00	Night
Apr-18-2024 23:00	53.2	9.3	-4.5	North-West	0.00	Night
Apr-19-2024 02:00	50.5	9.2	-5.5	North-West	0.00	Night
Apr-19-2024 03:00	54.5	7.9	-6.3	North-West	0.00	Night
Apr-19-2024 04:00	53.5	9.4	-6.4	North-West	0.00	Night
Apr-19-2024 05:00	53.4	10.4	-6.5	North-West	0.00	Night
Apr-19-2024 06:00	55.2	10.9	-6.8	North	0.00	Night
Apr-25-2024 06:00	50.9	7.6	3.9	North	0.00	Night
Apr-26-2024 06:00	57.3	9.1	1.3	North-West	0.00	Night

3.0 PARTICULATE RESULTS

As per development permit the air quality threshold values of particulate matter for this site are of 100 µg/m³ for TSP Daily, 29 µg/m³ for the PM2.5 Daily and 80 µg/m³ for the PM2.5 Hourly. As shown in Table 3, there were no exceedances.

Table 3. STAR PIT – April 2024 – Particulate Results

Date	TSP Daily Average	PM2.5 Daily Average	CRAZ NW PM2.5	PM2.5 Hourly Max
Monday 01-Apr-24	No Data			
Tuesday 02-Apr-24	No Data			
Wednesday 03-Apr-24	No Data			
Thursday 04-Apr-24	No Data			
Friday 05-Apr-24	No Data			
Saturday 06-Apr-24	No Data			
Sunday 07-Apr-24	No Data			
Monday 08-Apr-24	No Data			
Tuesday 09-Apr-24	No Data			
Wednesday 10-Apr-24	0.3	0.2	3.4	0.2
Thursday 11-Apr-24	7.7	0.7	6.0	2.3
Friday 12-Apr-24	5.0	1.4	4.8	1.6
Saturday 13-Apr-24	1.7	0.7	4.9	1.1
Sunday 14-Apr-24	3.1	1.6	5.1	1.9
Monday 15-Apr-24	6.3	1.6	6.3	2.6
Tuesday 16-Apr-24	3.8	1.4	3.1	1.8
Wednesday 17-Apr-24	0.8	0.4	1.7	0.6
Thursday 18-Apr-24	No Data			
Friday 19-Apr-24	3.2	0.8	7.4	1.1
Saturday 20-Apr-24	14.2	1.5	6.6	3.9
Sunday 21-Apr-24	6.6	1.5	5.6	1.7
Monday 22-Apr-24	3.2	1.6	1.1	1.8
Tuesday 23-Apr-24	No Data			
Wednesday 24-Apr-24	8.2	1.8	5.8	2.5
Thursday 25-Apr-24	3.7	1.5	4.2	2.0
Friday 26-Apr-24	4.1	1.1	2.3	3.0
Saturday 27-Apr-24	9.4	1.5	4.2	2.4
Sunday 28-Apr-24	4.5	1.1	3.3	1.5
Monday 29-Apr-24	0.5	0.2	2.9	0.2
Tuesday 30-Apr-24	9.1	1.1	1.8	1.6
Monthly Average	5.0	1.1	4.2	1.8

Figure 3 & Figure 4 illustrate the values in Table 3 and compares the TSP & PM 2.5 values to the AAAQO & AAAQG criteria, respectively.

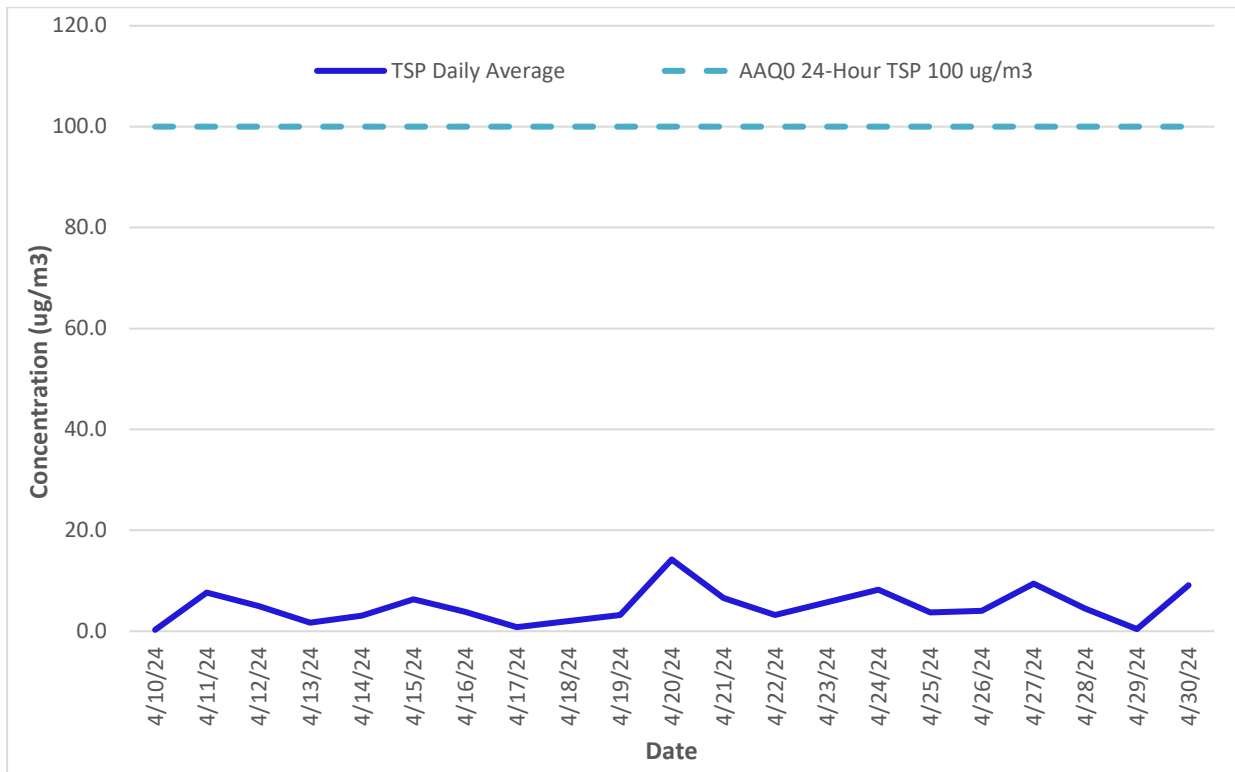


Figure 3. STAR PIT – April 2024 – TSP Daily Particulate Monitoring Results

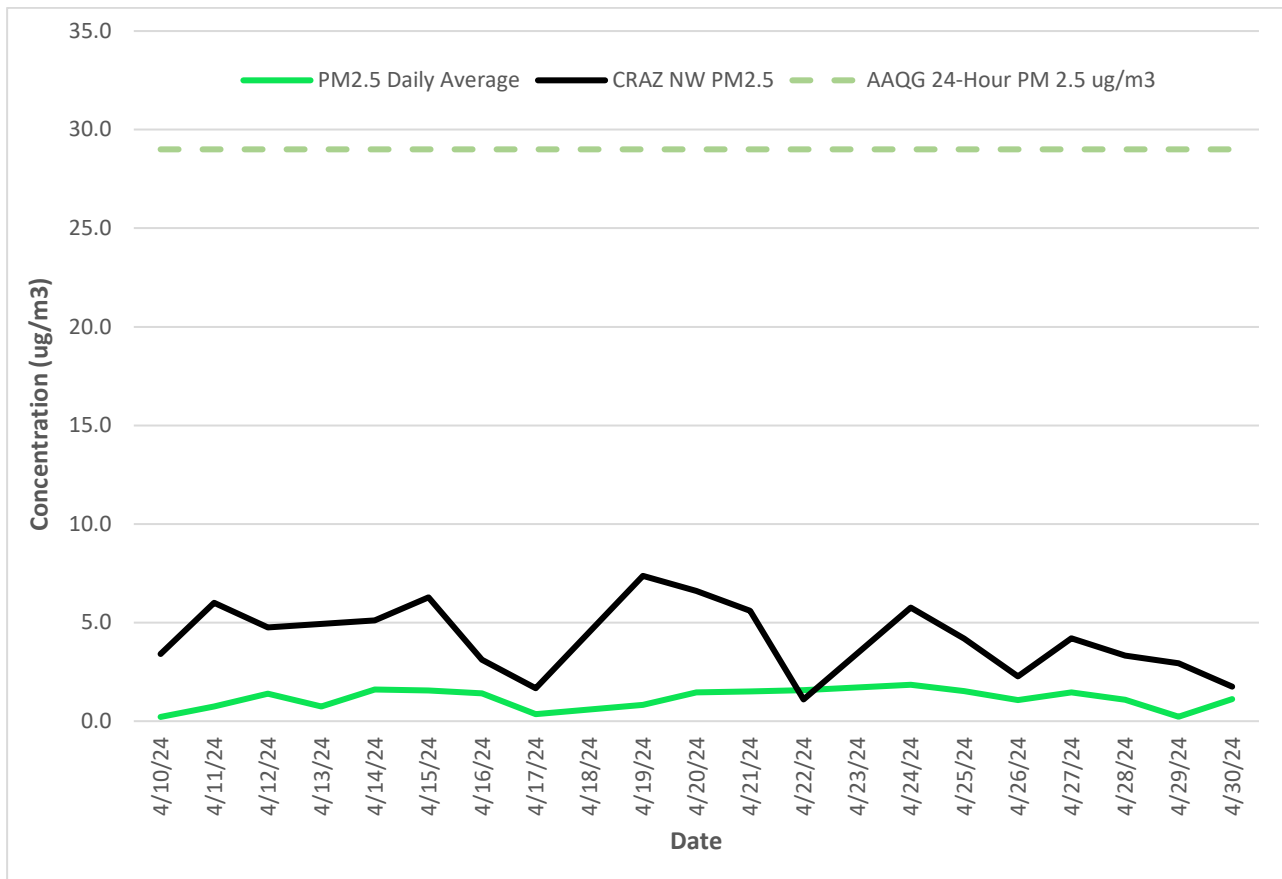


Figure 4. STAR PIT – April 2024 – PM 2.5 Daily Particulate Monitoring Results

As previously discussed, there were no exceedances of the particulate limits in the month of April 2024.

Table 4. STAR PIT – April 2024 – Particulate Exceedances

Date	PM2.5	Wind Speed (Km/hr)	Temperature (°C)	Wind Direction	Hourly Rainfall (mm)	Day/Night
No Exceedances						

4.0 METEOROLOGICAL DATA

4.1 TRAILER

As indicated in Table 5 & Figure 5, the primary wind direction for April 2024 was from the west and north with moderate to high windspeeds (between 0 – 20 km/hr). The monthly values for the temperature and precipitation can be found in Table 6.

Table 5. STAR PIT Trailer – April 2024 – Wind Data Results

Count of Direction	Column Labels								Grand Total
Row Labels	East	North	Northeast	Northwest	South	Southeast	Southwest	West	Grand Total
0-4	0.00%	28.09%	1.11%	0.00%	0.00%	0.00%	0.00%	0.00%	29.21%
4-8	1.25%	0.56%	0.28%	0.56%	0.56%	0.83%	1.11%	1.25%	5.84%
8-12	0.70%	2.23%	0.42%	3.20%	2.36%	1.25%	2.23%	0.70%	18.50%
12-16	0.14%	1.25%	0.14%	3.62%	0.42%	2.09%	2.23%	0.14%	15.99%
16-20	0.14%	0.70%	0.00%	2.92%	0.14%	2.78%	1.11%	0.14%	11.96%
20-24	0.00%	0.97%	0.00%	4.17%	0.14%	2.36%	0.56%	0.00%	10.43%
>24	0.00%	0.28%	0.00%	3.62%	0.00%	3.34%	0.14%	0.00%	8.07%
Grand Total	2.23%	34.08%	1.95%	18.08%	3.62%	12.66%	7.37%	2.23%	100.00%

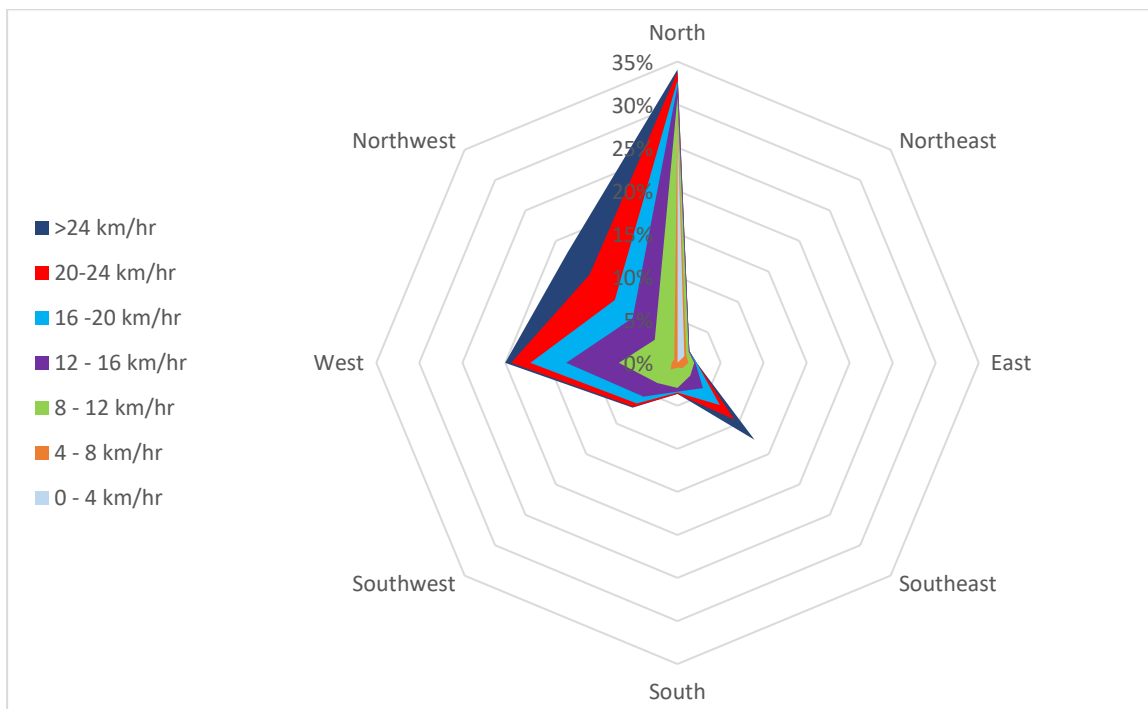


Figure 5. STAR PIT Trailer – April 2024 - Wind Rose

Table 6. STAR PIT Trailer – April 2024 – Wind Data Results

Parameter	Monthly Average	1-Hour	
		Maximum	Minimum
Temperature (°C)	3.2	14.4	-6.8
Precipitation (mm)	0.0	1.4	0.0
Total Monthly Precipitation (mm)		6.0	

4.2 OFFICE

As indicated in Table 7 & Figure 6, the primary wind direction for April 2024 was from the west and north with moderate to high windspeeds (between 0 and +20 km/hr). The monthly values for the temperature and precipitation can be found in Table 8.

Table 7. STAR PIT Office – April 2024 – Wind Data Results

Count of Direction	Column Labels								Grand Total
Row Labels	East	North	Northeast	Northwest	South	Southeast	Southwest	West	Grand Total
0-4	0.14%	1.39%	0.00%	0.00%	0.14%	0.00%	0.14%	0.14%	1.94%
4-8	0.42%	0.69%	0.42%	0.28%	0.56%	1.11%	1.39%	0.83%	5.69%
8-12	0.56%	2.78%	0.69%	2.78%	2.50%	1.81%	1.39%	2.36%	14.86%
12-16	0.00%	3.33%	1.53%	2.36%	2.92%	1.81%	1.25%	5.56%	18.75%
16-20	0.00%	3.47%	1.11%	3.89%	2.36%	1.53%	0.97%	6.11%	19.44%
20-24	0.00%	1.11%	0.14%	2.78%	0.97%	1.11%	0.83%	5.42%	12.36%
>24	0.00%	7.64%	0.56%	5.14%	2.64%	0.42%	0.56%	10.00%	26.94%
Grand Total	1.11%	20.42%	4.44%	17.22%	12.08%	7.78%	6.53%	30.42%	100.00%

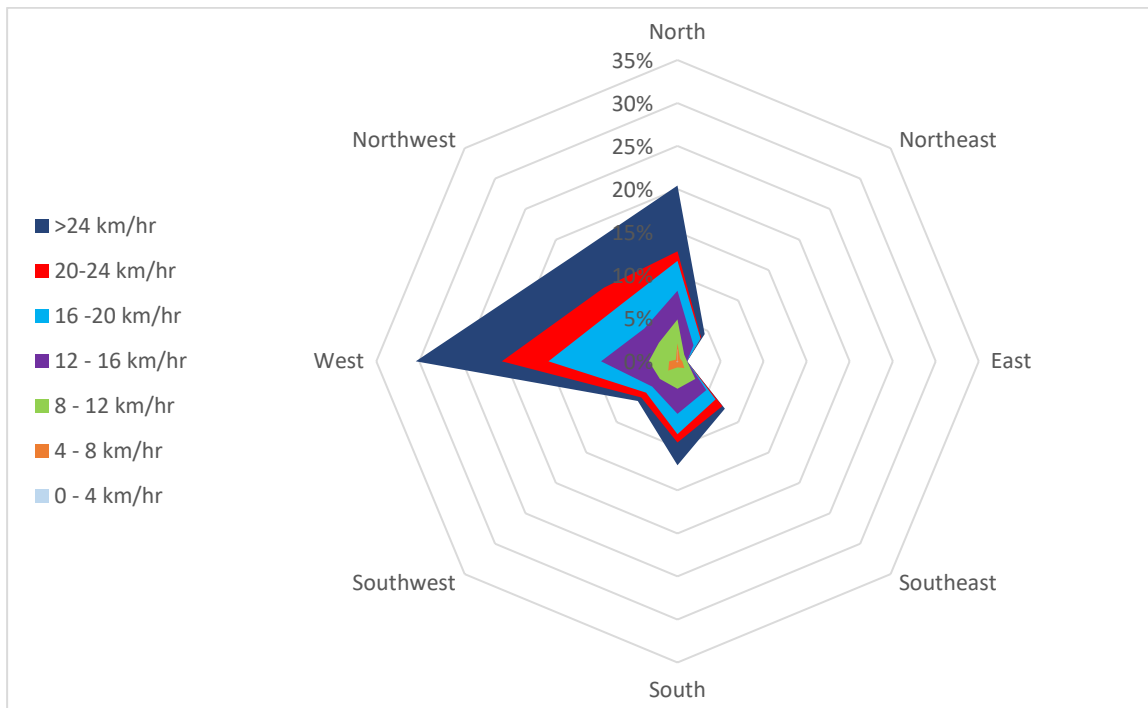


Figure 6. STAR PIT Office – April 2024 - Wind Rose

Table 8. STAR PIT Office – April 2024 – Wind Data Results

Parameter	Monthly Average	1-Hour	
		Maximum	Minimum
Temperature (°C)	4.1	15.3	-6.6
Precipitation (mm)	0.0	2.8	0.0
Total Monthly Precipitation (mm)		9.1	

5.0 CALIBRATION RECORDS

Record of Calibration Results

Description	Location	Date	Time	Pre / Post	Calibration Level	Calibrator Model	Serial Number
Pre-Measurement Calibration	STAR PIT	March 7, 2024	09:00	Post	93.9 dBA	B&K 4231	2575493
Post-Measurement Calibration	STAR PIT	April 9, 2024	11:00	Pre	93.8 dBA	B&K 4231	2575493