

Ambient Air and Sound

Monthly Report

STONEY TRAIL AGGREGATE RESOURCE

BURNCO

LAFARGE



Volker Stevin
Contracting Ltd.

Heidelberg
Materials

December 2023

Glossary

- L_{eq}** - Equivalent Continuous Sound Pressure Level. The total sound energy logged over the course of a measurement. (Uses logarithmic averaging).
- L_{eq24}** - Measured over the entire 24-period (00:00 – 23:59)
- L_{eqDay}** - Measured over the daytime period (07:00 – 22:00)
- L_{eqNight}** - Measured over the nighttime period (22:00 – 07:00)
- SPL (dBA)** - Sound Pressure Level in dBA (A-weighted, which is corrected for human hearing)
- TSP** - Total Suspended Particulate Matter. Includes particulates with a diameter of greater than 10 micrometers and smaller.
- PM_{2.5}** - Particulate Matter with a diameter of 2.5 micrometers and smaller.

1.0 SOUND LEVEL MEASUREMENT RESULTS

The results of the sound monitoring at the STAR Pit can be found in Table 1. Table 1 provides the daily averaged L_{eq24} , L_{eqDay} and $L_{eqNight}$ sound levels in addition to the minimum and maximum L_{eq24} values.

Table 1. December 2023 – STAR PIT – Sound Monitoring Results¹

Day	Leq24	L _{eq} Min	L _{eq} Max	LeqDay	LeqNight
Friday 01-Dec-23	47.5	41.6	51.9	48.7	45.6
Saturday 02-Dec-23	47.1	45.6	47.0	46.4	45.8
Sunday 03-Dec-23	46.0	44.0	47.4	46.0	N/A
Monday 04-Dec-23	45.2	44.7	46.1	45.5	44.7
Tuesday 05-Dec-23	45.1	39.1	48.3	46.3	44.5
Wednesday 06-Dec-23	49.9	39.4	54.4	52.1	40.5
Thursday 07-Dec-23	41.0	35.2	44.0	41.9	36.4
Friday 08-Dec-23	40.8	35.2	44.6	41.9	38.0
Saturday 09-Dec-23	44.5	34.2	47.9	45.8	35.8
Sunday 10-Dec-23	50.3	40.6	54.3	54.3	44.2
Monday 11-Dec-23	47.1	43.0	49.9	47.1	N/A
Tuesday 12-Dec-23	47.3	46.1	48.1	47.3	N/A
Wednesday 13-Dec-23	43.2	36.5	46.7	43.6	38.6
Thursday 14-Dec-23	51.7	42.3	55.4	51.2	52.6
Friday 15-Dec-23	48.7	38.1	52.7	50.4	46.6
Saturday 16-Dec-23	52.8	46.3	57.1	53.6	52.0
Sunday 17-Dec-23	50.1	42.6	52.0	51.4	49.6
Monday 18-Dec-23	49.6	45.1	53.1	49.1	49.6
Tuesday 19-Dec-23	47.9	41.2	50.8	50.1	46.0
Wednesday 20-Dec-23	49.3	47.8	50.9	49.3	N/A
Thursday 21-Dec-23	48.3	41.4	54.5	47.1	49.1
Friday 22-Dec-23	47.6	44.2	49.9	47.7	47.2
Saturday 23-Dec-23	45.9	40.7	48.9	44.6	48.9
Sunday 24-Dec-23	41.7	38.9	43.5	42.3	38.9
Monday 25-Dec-23	40.5	38.7	41.5	40.5	N/A
Tuesday 26-Dec-23	35.8	33.1	38.7	N/A	35.8
Wednesday 27-Dec-23	43.8	42.2	44.9	43.8	N/A
Thursday 28-Dec-23	42.0	39.1	44.2	42.0	N/A
Friday 29-Dec-23	46.5	44.4	47.9	46.5	N/A
Saturday 30-Dec-23	46.8	39.7	49.2	48.1	41.0
Sunday 31-Dec-23	43.2	40.8	44.2	42.8	40.9
Monthly Average	46.0	41.0	48.7	46.9	44.0
Monthly Maximum	52.8	47.8	57.1	54.3	52.6
Monthly Minimum	35.8	33.1	38.7	40.5	35.8

¹ It should be noted that all measured sound levels provided in Table 1 are for instances in which the wind speeds were below 11 km/hr and rainfall was below 3mm/hr, as both conditions will impact the validity of the measured results. As such, it is possible that there will time periods/days in which there is no valid data.

Figure 1 provides the graphical representation of the results found in Table 1. Figure 2 illustrates the hourly average, maximum and minimum L_{eq} dBA values for the entire month. In addition, the City of Calgary’s Community Standards Bylaw values have been included.

Lastly, it is important to note that the monitoring stations are located inside the perimeter berms, adjacent to operations and not beyond the site boundaries. Measurements are intended to help monitor and measure the internal operations performance and are not representative of the lower offsite levels.

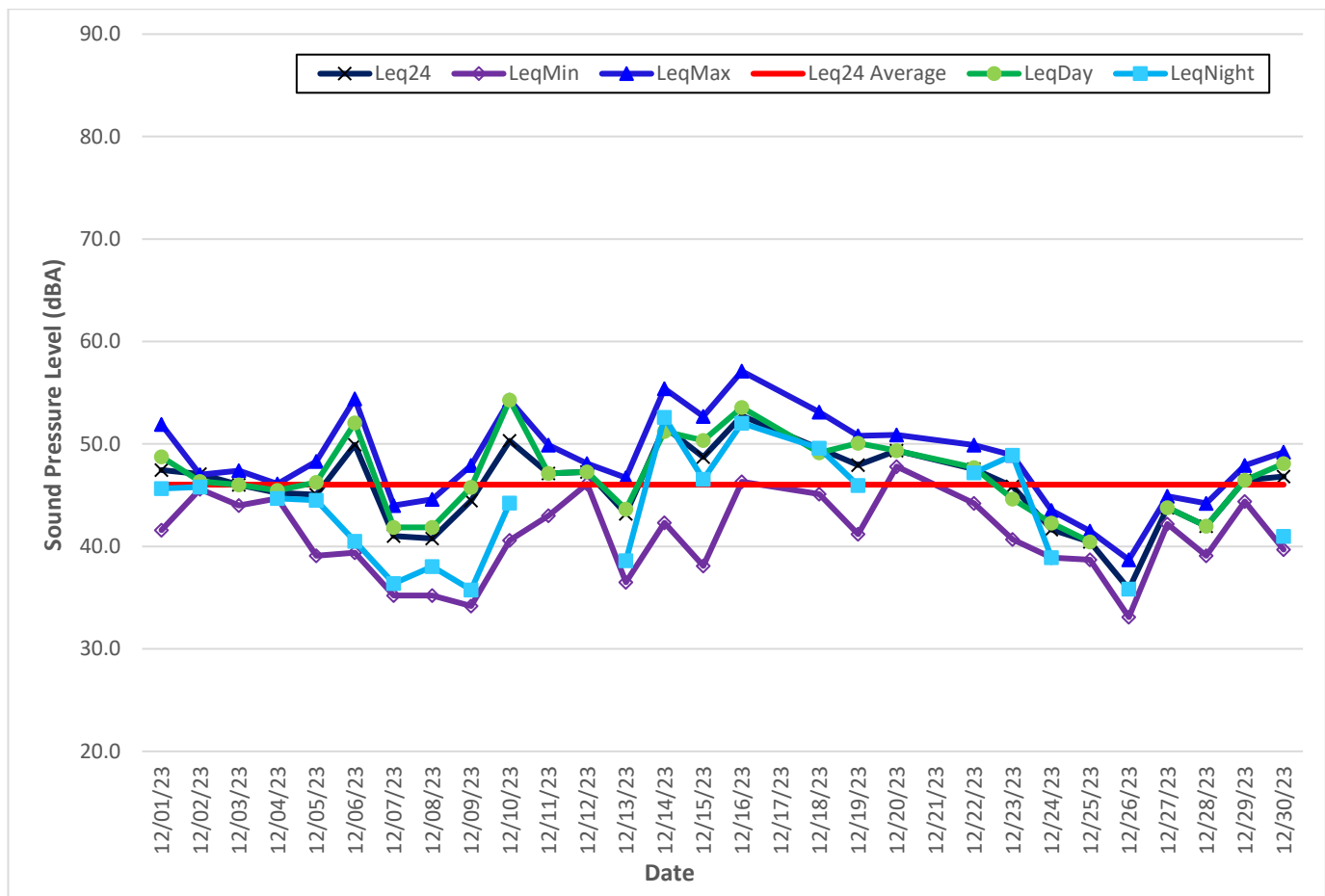


Figure 1. STAR PIT – December 2023 – Daily Sound Monitoring Results²

² Values of 30 were given to dates in which there was no data. This was to allow for the creation of the graph. The values within Table 1 are correctly calculated ignoring the dates of no data (due to wind or rain).

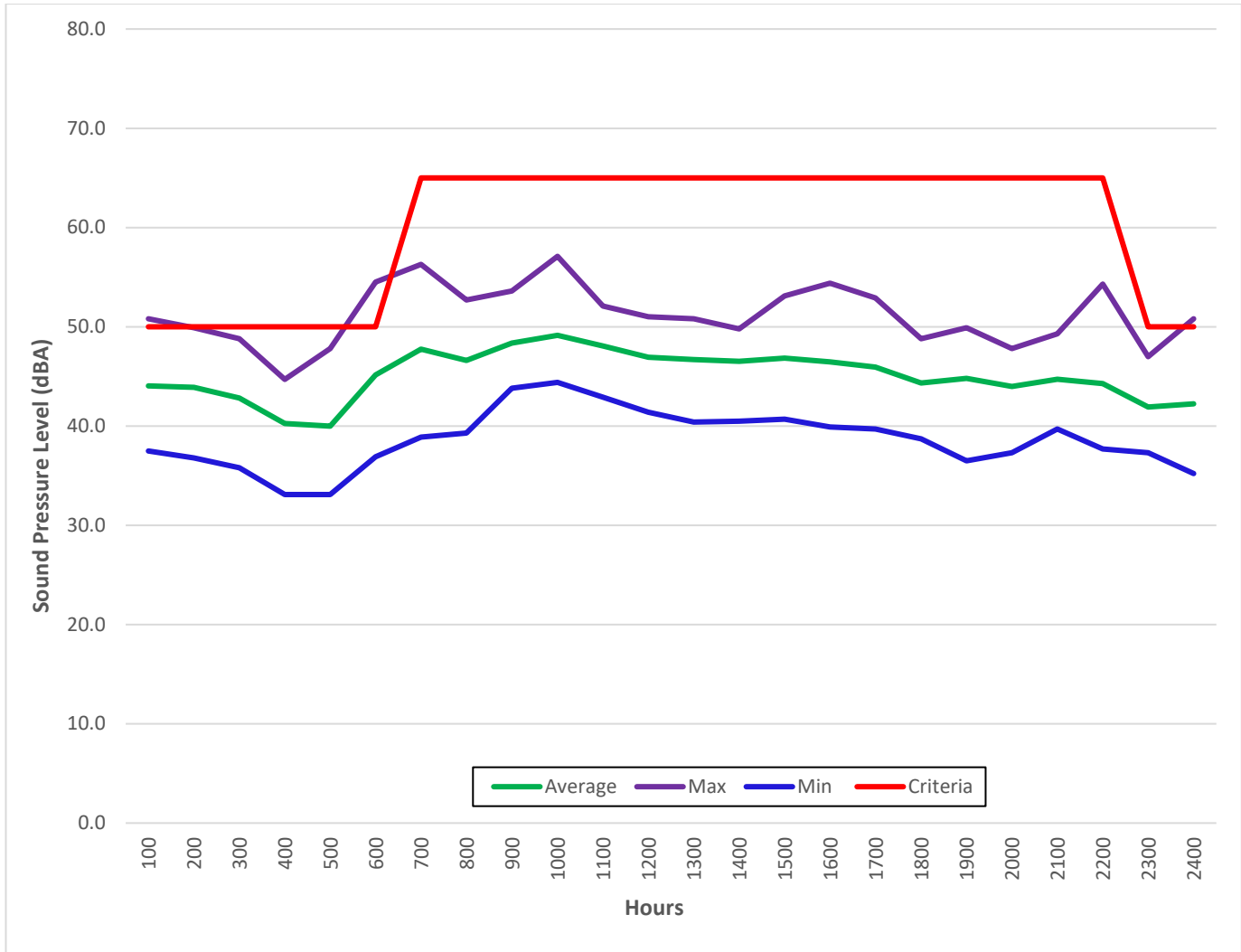


Figure 2. STAR PIT – December 2023 – Hourly Sound Monitoring Summary

2.0 SOUND LEVEL EXCEEDANCES

As per the development permit, the permissible sound level for this site is 50 dBA L_{eq} -1Hour. As shown in Table 2, from December 1 to 31, 2023 there were 5 exceedances.

Table 2. STAR PIT – December 2023 – Sound Level Exceedances

Date	$L_{eq1-hour}$ (dBA)	Wind Speed (Km/hr)	Temperature (°C)	Wind Direction	Hourly Rainfall (mm)	Day/Night
Dec-17-2023 00:00	50.8	10.6	4.2	West	0.00	Night
Dec-17-2023 06:00	51.2	3.5	-3.4	North-East	0.00	Night
Dec-18-2023 06:00	52.1	4.9	4.8	South	0.00	Night
Dec-19-2023 01:00	50.8	9.0	-2.7	North-West	0.00	Night
Dec-21-2023 06:00	54.5	5.3	3.6	West	0.00	Night

3.0 PARTICULATE RESULTS

As per development permit the air quality threshold values of particulate matter for this site are of 100 µg/m³ for TSP Daily, 29 µg/m³ for the PM2.5 Daily and 80 µg/m³ for the PM2.5 Hourly. As shown in Table 3, there were no exceedances.

Table 3. STAR PIT – December 2023 – Particulate Results

Date	TSP Daily Average	PM2.5 Daily Average	CRAZ NW PM2.5	PM2.5 Hourly Max
Friday 01-Dec-23	7.6	2.4	11.0	4.1
Saturday 02-Dec-23	3.8	0.8	5.1	1.3
Sunday 03-Dec-23	4.8	0.9	4.3	1.4
Monday 04-Dec-23	1.9	0.5	6.1	0.6
Tuesday 05-Dec-23	0.6	0.2	4.3	0.4
Wednesday 06-Dec-23	5.6	1.4	3.3	4.7
Thursday 07-Dec-23	0.8	0.7	6.4	1.4
Friday 08-Dec-23	1.3	1.2	10.5	2.6
Saturday 09-Dec-23	2.3	0.8	6.4	1.4
Sunday 10-Dec-23	0.9	0.2	1.9	0.3
Monday 11-Dec-23	1.8	1.0	5.7	1.4
Tuesday 12-Dec-23	4.3	1.0	4.3	1.1
Wednesday 13-Dec-23	3.0	0.6	13.9	1.1
Thursday 14-Dec-23	9.3	1.4	4.6	3.1
Friday 15-Dec-23	2.5	2.1	10.4	4.2
Saturday 16-Dec-23	2.8	0.9	3.5	1.7
Sunday 17-Dec-23	2.6	0.6	2.5	0.9
Monday 18-Dec-23	5.0	1.0	6.4	2.6
Tuesday 19-Dec-23	2.5	1.4	11.5	2.1
Wednesday 20-Dec-23	1.2	0.3	4.4	0.5
Thursday 21-Dec-23	0.8	0.3	9.5	0.4
Friday 22-Dec-23	4.3	1.3	5.4	5.0
Saturday 23-Dec-23	0.8	0.3	1.5	0.5
Sunday 24-Dec-23	2.0	0.5	2.5	0.8
Monday 25-Dec-23	7.9	1.8	8.9	2.4
Tuesday 26-Dec-23	1.3	0.3	2.5	0.3
Wednesday 27-Dec-23	2.3	0.7	6.5	1.2
Thursday 28-Dec-23	0.9	0.2	4.4	0.3
Friday 29-Dec-23	6.1	1.2	5.6	2.4
Saturday 30-Dec-23	3.5	1.5	8.1	2.4
Sunday 31-Dec-23	0.9	0.6	4.6	1.0
Monthly Average	3.1	0.9	6.0	1.7

Figure 3 & Figure 4 illustrate the values in Table 3 and compares the TSP & PM 2.5 values to the AAAQO & AAAQG criteria, respectively.

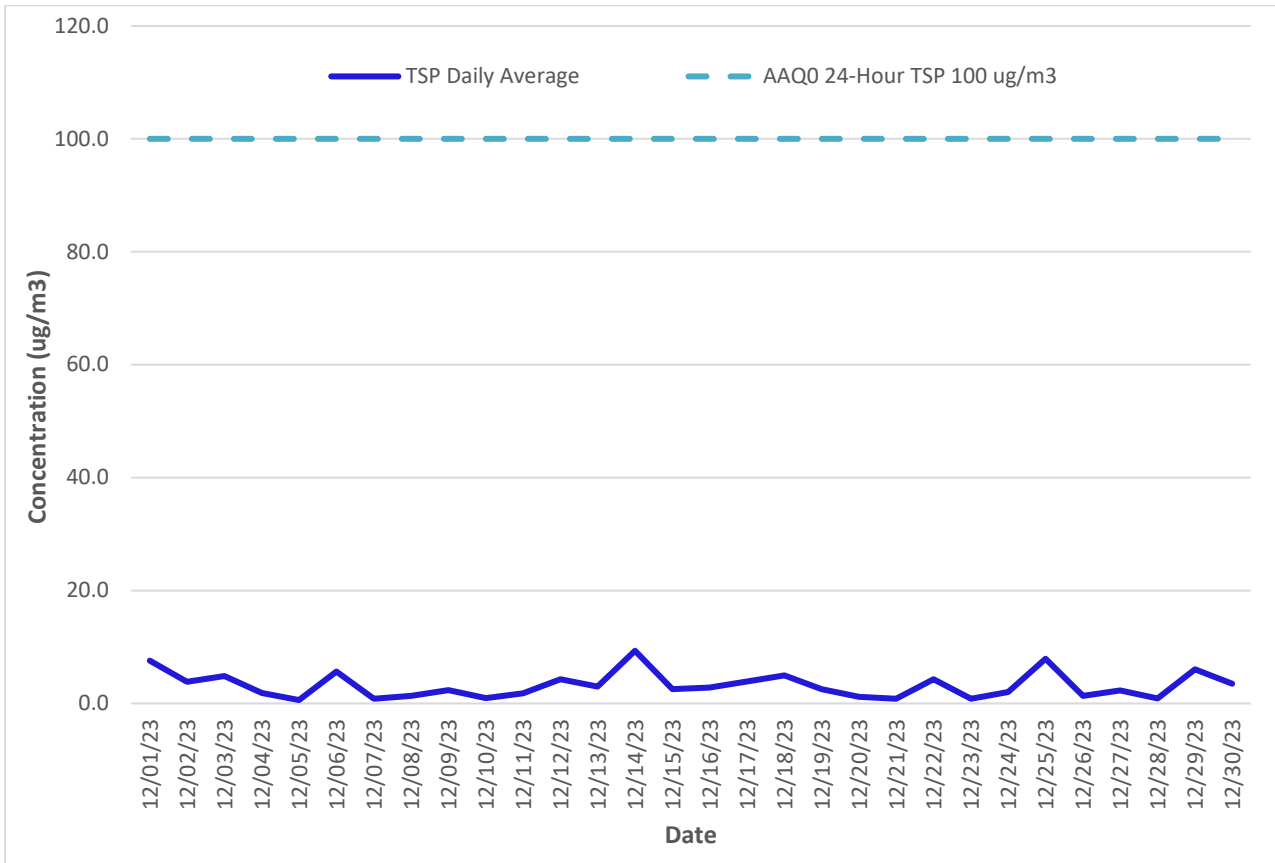


Figure 3. STAR PIT – December 2023 – TSP Daily Particulate Monitoring Results

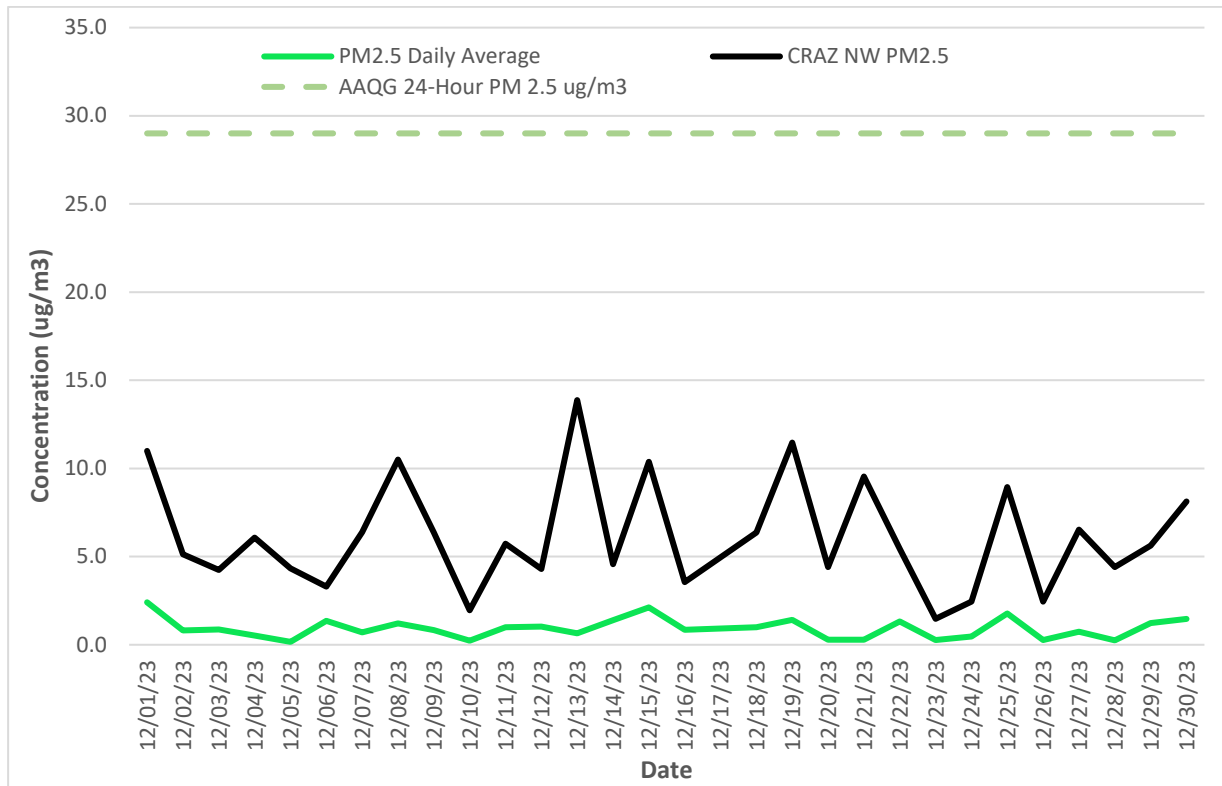


Figure 4. STAR PIT – December 2023 – PM 2.5 Daily Particulate Monitoring Results

As previously discussed, there were no exceedances of the particulate limits in the month of December 2023.

Table 4. STAR PIT – December 2023 – Particulate Exceedances

Date	PM2.5	Wind Speed (Km/hr)	Temperature (°C)	Wind Direction	Hourly Rainfall (mm)	Day/Night
No Exceedances						

4.0 METEOROLOGICAL DATA

4.1 TRAILER

As indicated in Table 5 & Figure 5, the primary wind direction for December 2023 was from the west and southwest with moderate to high windspeeds (between 8 – 24 km/hr). The monthly values for the temperature and precipitation can be found in Table 6.

Table 5. STAR PIT Trailer – December 2023 – Wind Data Results

Count of Direction	Column Labels								Grand Total
Row Labels	East	North	Northeast	Northwest	South	Southeast	Southwest	West	Grand Total
0-4	0.14%	0.70%	0.42%	0.28%	0.00%	0.14%	0.28%	0.56%	2.50%
4-8	0.56%	2.64%	0.83%	2.09%	2.09%	0.70%	3.06%	1.39%	13.35%
8-12	0.14%	0.83%	0.42%	1.67%	6.12%	1.53%	12.93%	3.06%	26.70%
12-16	0.00%	0.70%	0.00%	2.92%	3.34%	2.36%	14.74%	5.42%	29.49%
16-20	0.00%	0.28%	0.00%	1.53%	0.56%	0.83%	7.09%	6.95%	17.25%
20-24	0.00%	0.00%	0.00%	0.83%	0.42%	0.97%	3.48%	2.92%	8.62%
>24	0.00%	0.00%	0.00%	0.70%	0.14%	0.00%	1.11%	0.14%	2.09%
Grand Total	0.83%	5.15%	1.67%	10.01%	12.66%	6.54%	42.70%	20.45%	100.00%

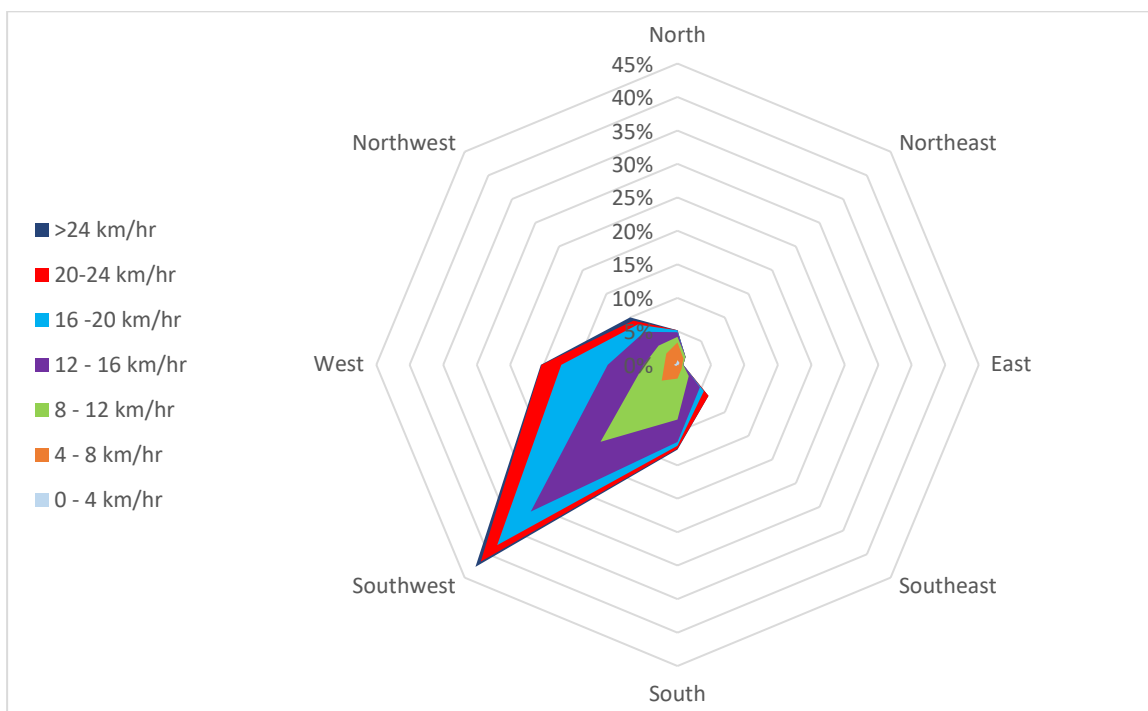


Figure 5. STAR PIT Trailer – December 2023 - Wind Rose

Table 6. STAR PIT Trailer – December 2023 – Wind Data Results

Parameter	Monthly Average	1-Hour	
		Maximum	Minimum
Temperature (°C)	1.8	14.9	-9.8
Precipitation (mm)	0.0	2.4	0.0
Total Monthly Precipitation (mm)		5.8	

4.2 OFFICE

As indicated in Table 7 & Figure 6, the primary wind direction for December 2023 was from the west with high windspeeds (between 12 – +24 km/hr). The monthly values for the temperature and precipitation can be found in Table 8.

Table 7. STAR PIT Office – December 2023 – Wind Data Results

Count of Direction	Column Labels								Grand Total
Row Labels	East	North	Northeast	Northwest	South	Southeast	Southwest	West	Grand Total
0-4	0.42%	0.14%	0.28%	0.14%	0.14%	0.14%	0.00%	0.56%	1.81%
4-8	0.83%	2.08%	1.53%	1.39%	1.39%	0.69%	3.33%	1.67%	12.92%
8-12	0.00%	2.08%	0.69%	0.42%	4.03%	0.56%	7.64%	1.94%	17.36%
12-16	0.00%	1.94%	0.28%	0.97%	3.19%	0.56%	4.58%	4.72%	16.25%
16-20	0.00%	1.67%	0.00%	0.69%	2.08%	0.28%	3.06%	8.06%	15.83%
20-24	0.00%	0.97%	0.00%	0.56%	0.83%	0.14%	1.94%	7.78%	12.22%
>24	0.00%	1.94%	0.00%	0.56%	0.56%	0.00%	0.14%	20.42%	23.61%
Grand Total	1.25%	10.83%	2.78%	4.72%	12.22%	2.36%	20.69%	45.14%	100.00%

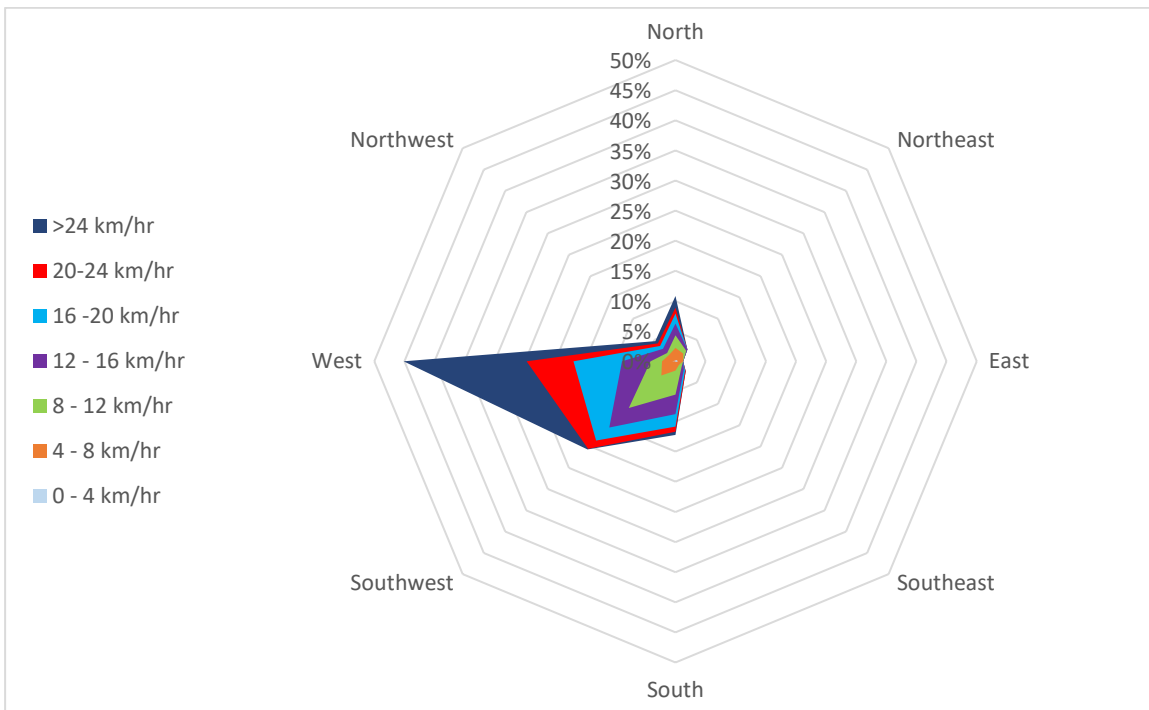


Figure 6. STAR PIT Office – December 2023 - Wind Rose

Table 8. STAR PIT Office – December 2023 – Wind Data Results

Parameter	Monthly Average	1-Hour	
		Maximum	Minimum
Temperature (°C)	1.8	14.8	-9.9
Precipitation (mm)	0.0	2.1	0.0
Total Monthly Precipitation (mm)		4.7	

5.0 CALIBRATION RECORDS

Record of Calibration Results

Description	Location	Date	Time	Pre / Post	Calibration Level	Calibrator Model	Serial Number
Pre-Measurement Calibration	STAR PIT	September 24, 2023	13:15	Pre	93.9 dBA	B&K 4231	2575493
Post-Measurement Calibration	STAR PIT	November 24, 2023	09:00	Pre	93.9 dBA	B&K 4231	2575493