

Ambient Air and Sound

Monthly Report

STONEY TRAIL AGGREGATE RESOURCE

BURNCO

LAFARGE



Volker Stevin
Contracting Ltd.

Heidelberg
Materials

August 2024

Glossary

- L_{eq}** - Equivalent Continuous Sound Pressure Level. The total sound energy logged over the course of a measurement. (Uses logarithmic averaging).
- L_{eq24}** - Measured over the entire 24-period (00:00 – 23:59)
- L_{eqDay}** - Measured over the daytime period (07:00 – 22:00)
- L_{eqNight}** - Measured over the nighttime period (22:00 – 07:00)
- SPL (dBA)** - Sound Pressure Level in dBA (A-weighted, which is corrected for human hearing)
- TSP** - Total Suspended Particulate Matter. Includes particulates with a diameter of greater than 10 micrometers and smaller.
- PM_{2.5}** - Particulate Matter with a diameter of 2.5 micrometers and smaller.

1.0 SOUND LEVEL MEASUREMENT RESULTS

The results of the sound monitoring at the STAR Pit can be found in Table 1. Table 1 provides the daily averaged L_{eq24} , L_{eqDay} and $L_{eqNight}$ sound levels in addition to the minimum and maximum L_{eq24} values.

Table 1. August 2024 – STAR PIT – Sound Monitoring Results¹

Day	Leq24	L _{eq} Min	L _{eq} Max	LeqDay	LeqNight
Thursday 01-Aug-24	54.0	49.2	57.3		54.0
Friday 02-Aug-24	51.4	40.9	54.7	53.0	47.6
Saturday 03-Aug-24	43.6	38.2	48.1	43.2	44.2
Sunday 04-Aug-24	39.7	35.4	42.9	40.8	39.0
Monday 05-Aug-24	40.0	32.2	42.4	41.4	35.4
Tuesday 06-Aug-24	50.6	28.7	55.2	52.6	46.9
Wednesday 07-Aug-24	54.0	46.7	57.3	53.4	54.1
Thursday 08-Aug-24	52.9	46.7	57.7	51.4	53.4
Friday 09-Aug-24	49.6	49.6	49.6		49.6
Saturday 10-Aug-24	50.3	49.4	51.5	49.6	51.5
Sunday 11-Aug-24	50.2	43.8	56.7	49.3	51.3
Monday 12-Aug-24	47.7	40.5	51.4	48.6	44.1
Tuesday 13-Aug-24	50.3	45.9	53.7	50.8	47.4
Wednesday 14-Aug-24	51.8	45.7	54.9	50.8	53.6
Thursday 15-Aug-24	53.6	46.7	56.2	51.4	54.6
Friday 16-Aug-24	50.9	45.5	53.8	51.4	49.9
Saturday 17-Aug-24	49.7	38.9	54.9	49.8	49.4
Sunday 18-Aug-24	52.1	41.6	54.8	48.9	53.4
Monday 19-Aug-24	49.5	43.6	54.0	48.7	50.5
Tuesday 20-Aug-24	50.4	45.5	54.9	47.6	52.4
Wednesday 21-Aug-24	54.5	43.2	58.4	55.4	52.7
Thursday 22-Aug-24	53.8	45.1	55.5	54.4	51.3
Friday 23-Aug-24	53.3	47.5	56.2	53.9	47.5
Saturday 24-Aug-24	47.0	44.7	48.4		47.0
Sunday 25-Aug-24	47.2	40.9	51.2	47.4	46.5
Monday 26-Aug-24	49.0	44.0	52.9	49.5	47.0
Tuesday 27-Aug-24	44.5	37.7	50.3	50.3	41.7
Wednesday 28-Aug-24	38.9	38.9	38.9		38.9
Thursday 29-Aug-24	48.4	43.9	50.2	48.4	
Friday 30-Aug-24	54.6	43.9	56.8	43.9	56.2
Saturday 31-Aug-24	54.5	44.4	57.9	50.2	54.9
Monthly Average	49.6	42.9	52.9	49.5	48.9
Monthly Maximum	54.6	49.6	58.4	55.4	56.2
Monthly Minimum	38.9	28.7	38.9	40.8	35.4

¹ It should be noted that all measured sound levels provided in Table 1 are for instances in which the wind speeds were below 11 km/hr and rainfall was below 3mm/hr, as both conditions will impact the validity of the measured results. As such, it is possible that there will time periods/days in which there is no valid data.

Figure 1 provides the graphical representation of the results found in Table 1. Figure 2 illustrates the hourly average, maximum and minimum L_{eq} dBA values for the entire month. In addition, the City of Calgary’s Community Standards Bylaw values have been included.

It is important to note that the monitoring stations are located inside the perimeter berms, adjacent to operations and not beyond the site boundaries. Measurements are intended to help monitor and measure the internal operations performance and are not representative of the lower offsite levels.

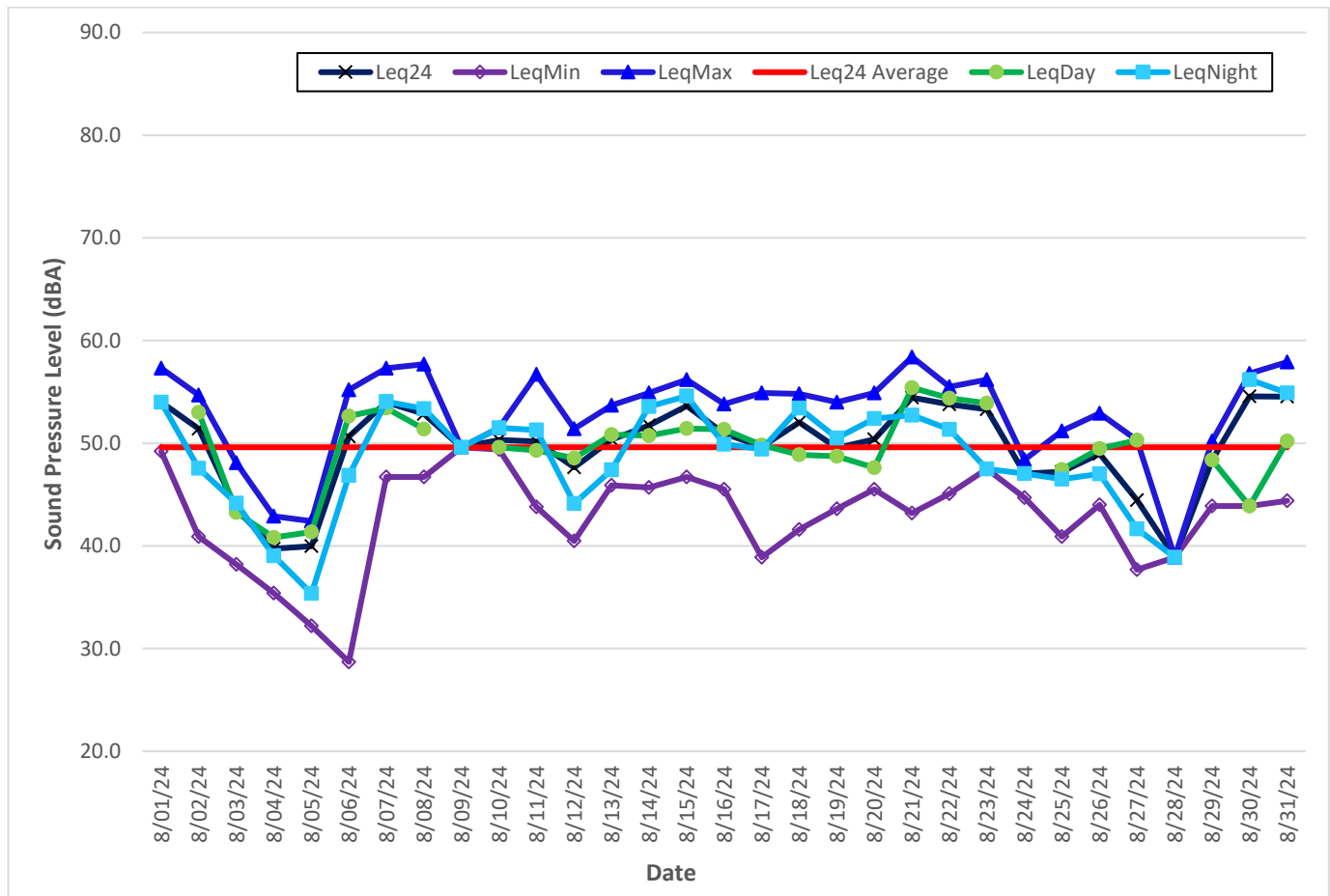


Figure 1. STAR PIT – August 2024 – Daily Sound Monitoring Results²

² Values of 30 were given to dates in which there was no data. This was to allow for the creation of the graph. The values within Table 1 are correctly calculated ignoring the dates of no data (due to wind or rain).

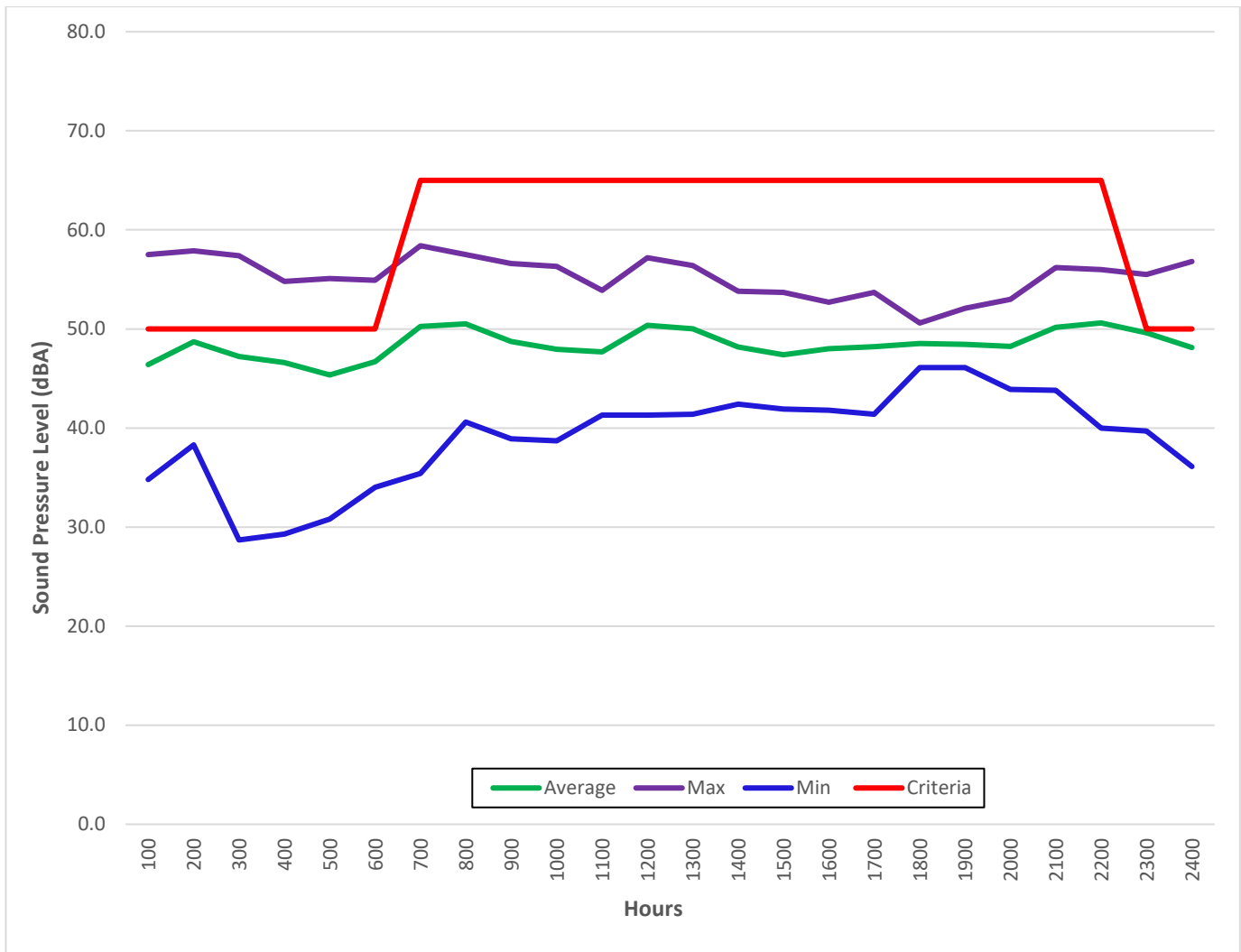


Figure 2. STAR PIT – August 2024 – Hourly Sound Monitoring Summary

2.0 SOUND LEVEL EXCEEDANCES

As per the development permit, the permissible sound level for this site is 50 dBA L_{eq} -1Hour for the nighttime and 65 dBA L_{eq} -1Hour for the daytime hours. As shown in Table 2, from August 1 to August 31, 2024, there were 49 exceedances. All exceedances occurred during the nighttime.

Table 2. STAR PIT – August 2024 – Sound Level Exceedances

Aug-01-2024 01:00	56.6	8.6	15.2	North	0.00	Night
Aug-01-2024 02:00	57.3	7.1	14.8	North-West	0.00	Night
Aug-01-2024 03:00	56.4	5.8	14.4	West	0.00	Night
Aug-02-2024 00:00	51.3	9.2	23.3	South	0.00	Night
Aug-03-2024 00:00	50.5	7.9	19.3	North	0.00	Night
Aug-06-2024 23:00	54.8	11.0	11.5	North-West	1.80	Night
Aug-07-2024 01:00	53.7	10.9	10.8	North-West	0.00	Night
Aug-07-2024 03:00	52.9	9.5	10.5	North-West	0.00	Night
Aug-07-2024 05:00	55.1	10.0	10.4	North	0.00	Night
Aug-07-2024 06:00	54.9	8.2	10.2	North	0.00	Night
Aug-07-2024 23:00	53.6	8.7	11.6	South	0.00	Night
Aug-08-2024 00:00	50.4	9.1	11.0	South-West	0.00	Night
Aug-08-2024 03:00	52.9	6.8	11.2	South	0.00	Night
Aug-08-2024 04:00	52.2	8.3	11.2	South-West	0.00	Night
Aug-08-2024 05:00	52.2	5.8	10.4	South	0.00	Night
Aug-08-2024 06:00	54.6	4.2	10.1	South	0.00	Night
Aug-11-2024 00:00	51.5	10.8	16.6	North	0.00	Night
Aug-11-2024 06:00	51.0	7.1	11.5	West	0.00	Night
Aug-11-2024 23:00	53.1	6.5	19.6	North	0.00	Night
Aug-14-2024 23:00	54.6	5.0	18.5	North	0.00	Night
Aug-15-2024 00:00	54.6	3.2	17.2	North	0.00	Night
Aug-15-2024 01:00	55.4	2.3	16.4	North-East	0.00	Night
Aug-15-2024 02:00	55.4	2.5	16.3	North	0.00	Night
Aug-15-2024 03:00	56.2	3.2	15.7	North	0.00	Night
Aug-15-2024 04:00	54.8	5.0	15.3	North	0.00	Night
Aug-15-2024 05:00	54.6	4.5	14.9	North	0.00	Night
Aug-15-2024 06:00	54.3	2.8	13.8	North	0.00	Night
Aug-16-2024 03:00	51.9	8.7	15.7	North-East	0.80	Night
Aug-17-2024 23:00	54.9	5.4	15.1	North-West	0.00	Night
Aug-18-2024 00:00	54.0	5.3	14.8	North-West	0.00	Night
Aug-18-2024 01:00	54.0	6.7	14.4	North-West	0.00	Night
Aug-18-2024 02:00	53.8	6.3	13.6	North-West	0.00	Night
Aug-18-2024 03:00	52.8	5.6	12.9	North-West	0.00	Night
Aug-18-2024 04:00	53.7	4.7	12.8	West	0.00	Night
Aug-18-2024 05:00	54.7	5.5	12.9	South-West	0.00	Night
Aug-18-2024 06:00	54.8	2.0	13.0	North-East	0.00	Night
Aug-19-2024 23:00	50.7	7.8	22.7	South-West	0.00	Night
Aug-20-2024 00:00	54.0	9.1	20.9	West	0.00	Night
Aug-20-2024 01:00	50.2	9.4	20.2	West	0.00	Night
Aug-20-2024 02:00	54.9	2.7	20.0	South-West	0.00	Night
Aug-20-2024 03:00	53.7	8.5	19.8	South	0.00	Night

Table 2. STAR PIT – August 2024 – Sound Level Exceedances

Aug-21-2024 04:00	54.4	7.7	12.7	West	0.00	Night
Aug-30-2024 23:00	55.5	10.5	14.6	North	0.00	Night
Aug-31-2024 00:00	56.8	7.1	13.9	North	0.00	Night
Aug-31-2024 01:00	57.5	5.1	13.8	North-West	0.00	Night
Aug-31-2024 02:00	57.9	5.8	13.8	North-West	0.00	Night
Aug-31-2024 03:00	57.4	4.4	13.8	West	0.00	Night
Aug-31-2024 04:00	54.3	3.1	13.7	West	0.00	Night
Aug-31-2024 05:00	50.1	1.6	12.9	West	0.00	Night

3.0 PARTICULATE RESULTS

As per development permit the air quality threshold values of particulate matter for this site are of 100 µg/m³ for TSP Daily, 29 µg/m³ for the PM2.5 Daily and 80 µg/m³ for the PM2.5 Hourly. As shown in Table 3, there was an exceedance on August 16, 2024. It was noted on this day that there were high levels of smoke from wildfires. This was also reflected in the CRAZ data.

Table 3. STAR PIT – August 2024 – Particulate Results

Date	TSP Daily Average	PM2.5 Daily Average	CRAZ NW PM2.5	PM2.5 Hourly Max
Thursday 01-Aug-24	11.9	3.4	5.4	9.6
Friday 02-Aug-24	21.7	6.3	13.3	11.0
Saturday 03-Aug-24	13.7	6.9	16.9	14.7
Sunday 04-Aug-24	14.7	13.6	29.8	18.0
Monday 05-Aug-24	10.3	8.5	14.0	10.9
Tuesday 06-Aug-24	6.9	6.1	11.3	9.8
Wednesday 07-Aug-24	22.9	21.3	33.4	34.5
Thursday 08-Aug-24	20.6	18.9	25.9	22.1
Friday 09-Aug-24	16.9	10.2	18.6	10.2
Saturday 10-Aug-24	15.8	9.9	19.7	11.0
Sunday 11-Aug-24	30.2	7.8	12.5	12.0
Monday 12-Aug-24	11.6	6.1	12.9	9.0
Tuesday 13-Aug-24	13.0	9.6	17.9	13.4
Wednesday 14-Aug-24	34.8	23.6	37.0	39.2
Thursday 15-Aug-24	42.1	28.7	46.5	49.9
Friday 16-Aug-24	33.2	29.8	42.0	39.3
Saturday 17-Aug-24	22.9	18.8	27.7	37.9
Sunday 18-Aug-24	22.9	16.2	19.0	23.2
Monday 19-Aug-24	13.1	4.8	11.7	7.1
Tuesday 20-Aug-24	15.8	3.5	7.5	10.0
Wednesday 21-Aug-24	4.8	2.3	7.6	4.3
Thursday 22-Aug-24	17.2	6.9	13.8	15.6
Friday 23-Aug-24	38.9	9.2	12.6	19.2
Saturday 24-Aug-24	3.3	2.7	14.0	5.7
Sunday 25-Aug-24	2.5	1.2	3.6	2.4
Monday 26-Aug-24	3.7	1.8	6.5	2.1
Tuesday 27-Aug-24	2.8	1.6	6.1	1.8
Wednesday 28-Aug-24	1.2	1.0	2.1	1.0
Thursday 29-Aug-24	2.5	0.9	3.3	1.2
Friday 30-Aug-24	11.0	2.5	5.0	4.2
Saturday 31-Aug-24	4.3	1.9	5.8	2.0
Monthly Average	15.7	9.2	16.2	14.6

Figure 3 & Figure 4 illustrate the values in Table 3 and compares the TSP & PM 2.5 values to the AAAQO & AAAQG criteria, respectively.

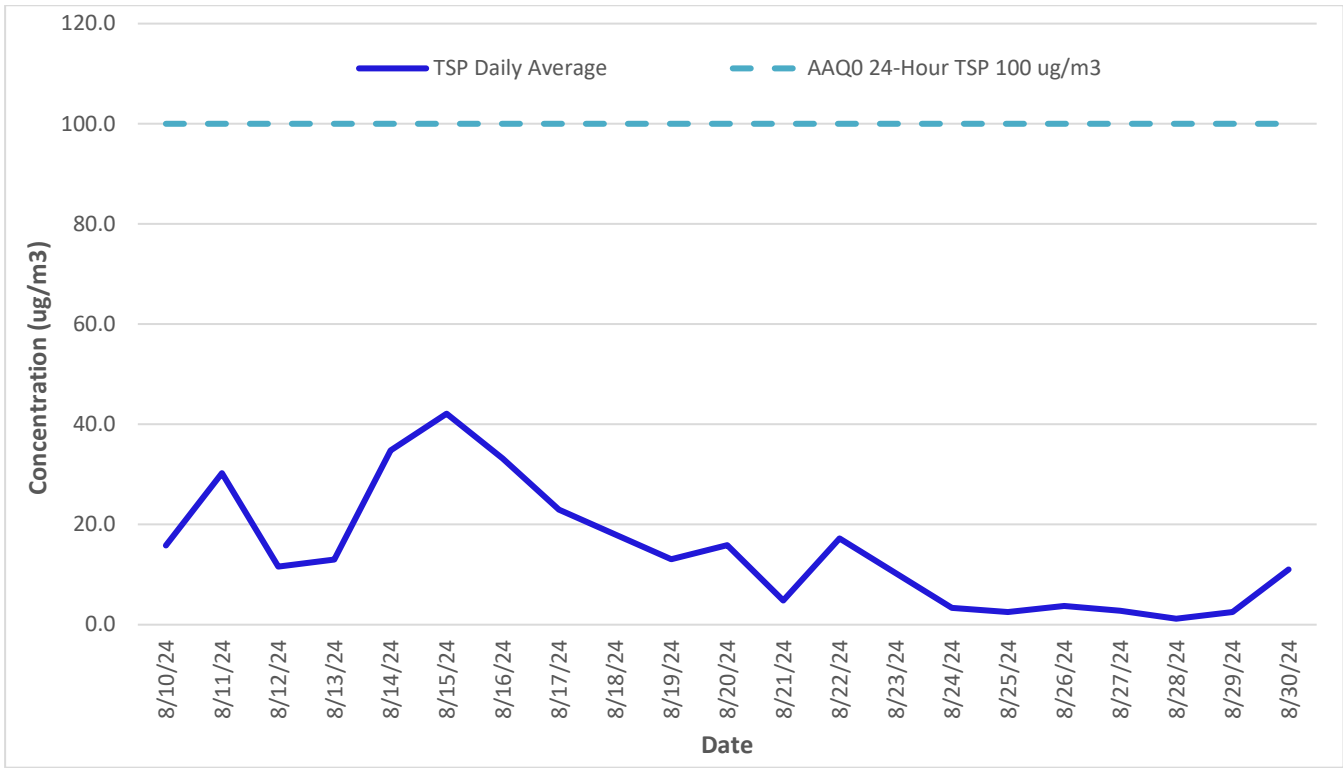


Figure 3. STAR PIT – August 2024 – TSP Daily Particulate Monitoring Results

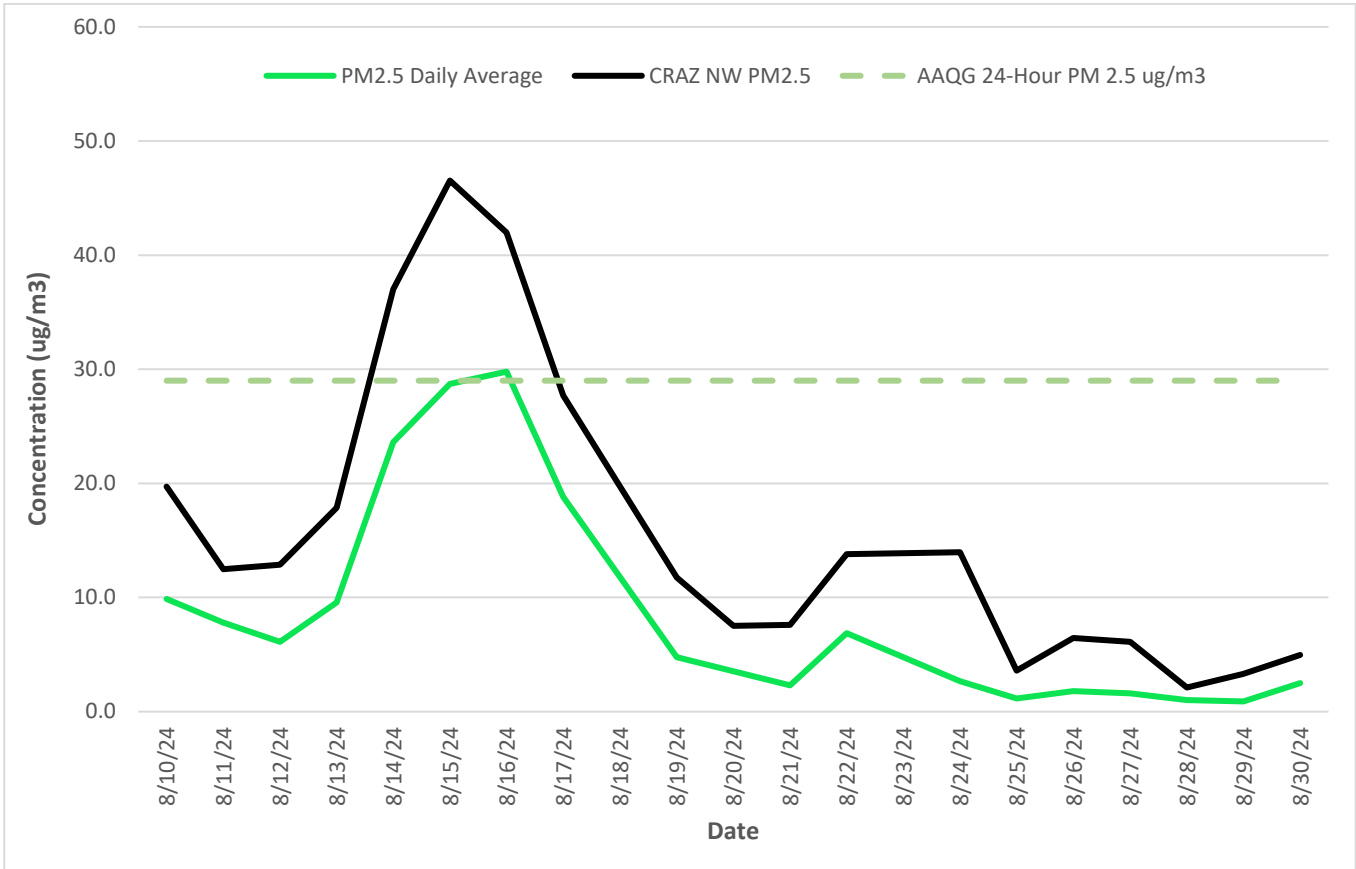


Figure 4. STAR PIT – August 2024 – PM 2.5 Daily Particulate Monitoring Results

4.0 METEOROLOGICAL DATA

4.1 TRAILER

As indicated in Table 4 & Figure 5, the primary wind direction for August 2024 was from the west and northwest (when moderate) and southeast (when high). The monthly values for the temperature and precipitation can be found in Table 5.

Table 4. STAR PIT Trailer – August 2024 – Wind Data Results

Count of Direction	Column Labels								Grand Total
Row Labels	East	North	Northeast	Northwest	South	Southeast	Southwest	West	Grand Total
0-4	0.09%	0.14%	0.05%	0.04%	0.00%	0.03%	0.03%	0.15%	0.52%
4-8	0.66%	0.78%	0.81%	1.69%	1.01%	0.77%	1.32%	2.23%	9.26%
8-12	1.96%	1.79%	1.80%	4.24%	4.53%	2.01%	4.37%	5.41%	26.13%
12-16	1.82%	1.17%	0.28%	2.18%	1.73%	8.16%	2.64%	6.53%	24.49%
16-20	1.52%	0.36%	0.00%	1.85%	0.55%	6.76%	1.33%	2.35%	14.72%
20-24	0.44%	0.47%	0.22%	1.64%	0.72%	8.92%	1.21%	0.22%	13.85%
>24	0.52%	0.00%	0.29%	4.40%	0.82%	3.97%	1.05%	0.00%	11.04%
Grand Total	7.01%	4.71%	3.44%	16.03%	9.35%	30.62%	11.95%	16.88%	100.00%

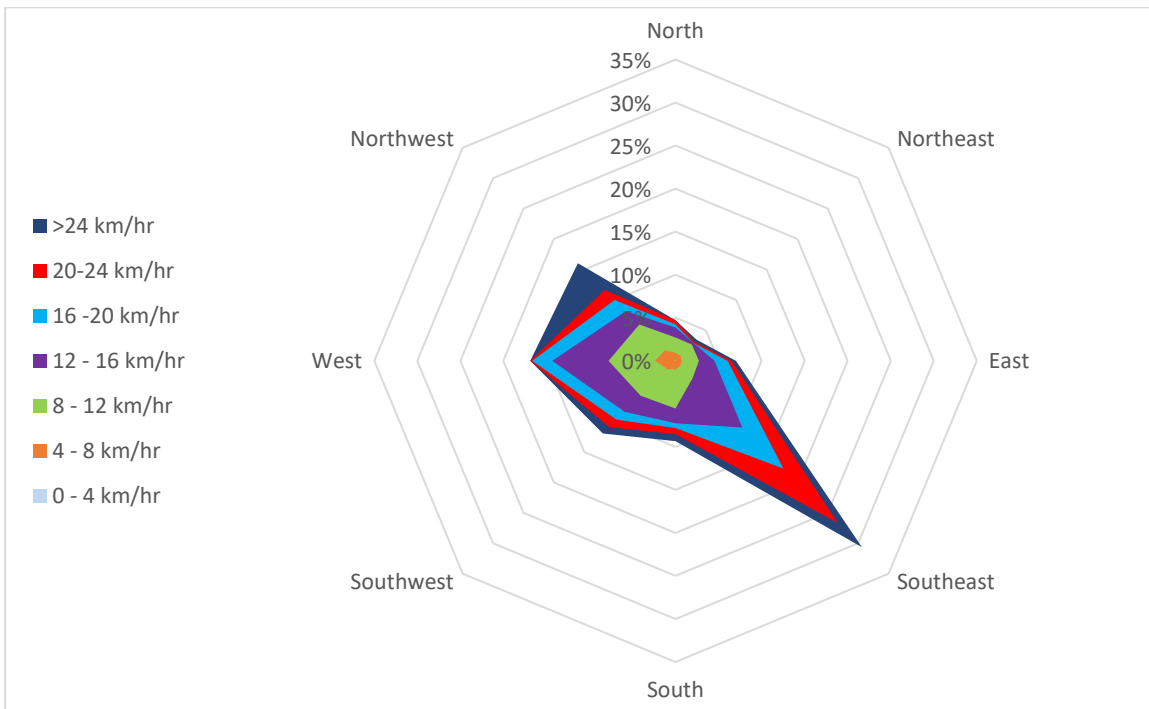


Figure 5. STAR PIT Trailer – August 2024 - Wind Rose

Table 5. STAR PIT Trailer – August 2024 – Wind Data Results

Parameter	Monthly Average	1-Hour	
		Maximum	Minimum
Temperature (°C)	16.3	28.4	5.4
Precipitation (mm)	0.2	24.0	0.0
Total Monthly Precipitation (mm)		120.9	

4.2 OFFICE

As indicated in Table 6 & Figure 6, the primary wind direction for August 2024 was from the west and northwest with moderate to high windspeeds (between 4 and +20 km/hr). The monthly values for the temperature and precipitation can be found in Table 7.

Table 6. STAR PIT Office – August 2024 – Wind Data Results

Count of Direction	Column Labels								Grand Total
Row Labels	East	North	Northeast	Northwest	South	Southeast	Southwest	West	Grand Total
0-4	0.11%	0.08%	0.00%	0.09%	0.09%	0.00%	0.09%	0.17%	0.63%
4-8	1.04%	1.17%	0.46%	0.84%	0.80%	0.67%	1.20%	1.32%	7.49%
8-12	1.82%	1.42%	1.36%	1.95%	2.33%	2.32%	1.68%	2.18%	15.06%
12-16	0.14%	2.89%	0.23%	4.39%	6.34%	4.97%	1.62%	2.79%	23.37%
16-20	0.17%	2.09%	0.34%	2.73%	3.67%	5.01%	1.11%	3.08%	18.20%
20-24	0.00%	0.83%	0.00%	1.62%	3.46%	3.03%	0.62%	3.50%	13.05%
>24	0.00%	3.39%	0.26%	6.33%	1.58%	0.94%	4.49%	5.20%	22.19%
Grand Total	3.28%	11.88%	2.66%	17.92%	18.28%	16.94%	10.81%	18.23%	100.00%

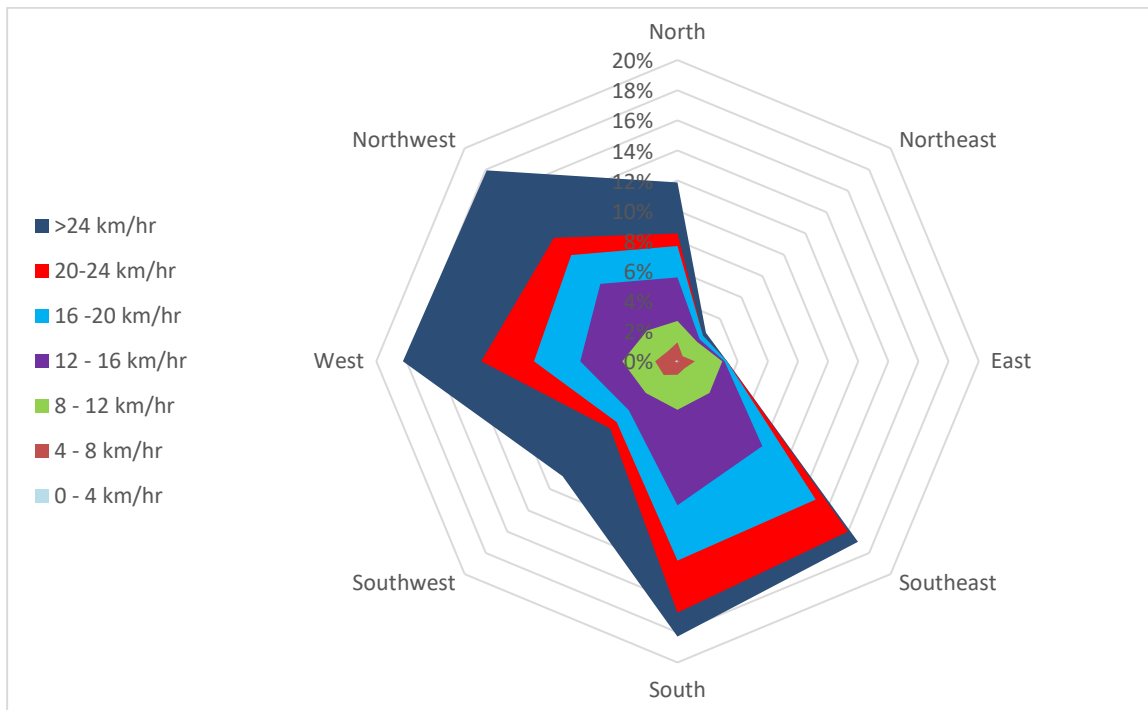


Figure 6. STAR PIT Office – August 2024 - Wind Rose

Table 7. STAR PIT Office – August 2024 – Wind Data Results

Parameter	Monthly Average	1-Hour	
		Maximum	Minimum
Temperature (°C)	16.4	28.6	5.8
Precipitation (mm)	0.2	20.3	0.0
Total Monthly Precipitation (mm)		116.8	

5.0 CALIBRATION RECORDS

Record of Calibration Results

Description	Location	Date	Time	Pre / Post	Calibration Level	Calibrator Model	Serial Number
Pre-Measurement Calibration	STAR PIT	May 9, 2024	11:00	Post	93.9 dBA	B&K 4231	2575493
Post-Measurement Calibration	STAR PIT	July 4, 2024	10:50	Pre	93.8 dBA	B&K 4231	2575493