

## Dust Results

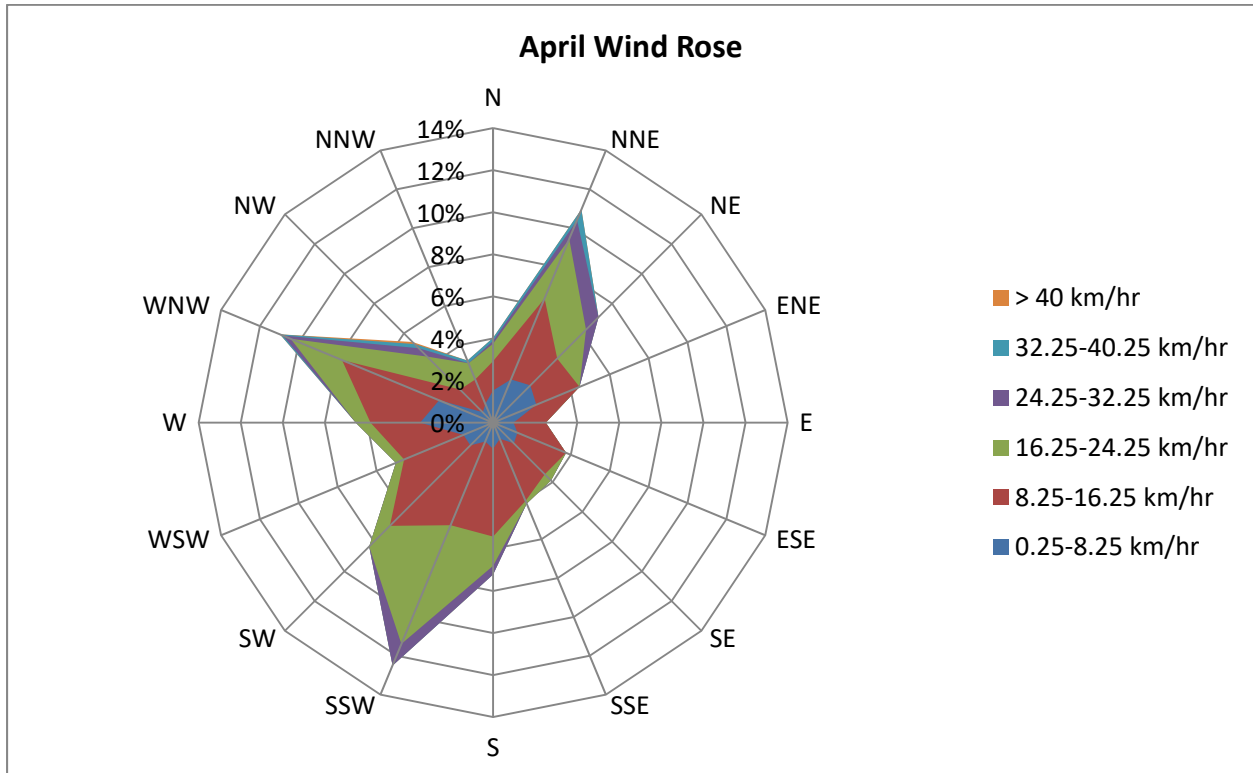


Figure 4-2: April 2018 wind rose from the scale house station

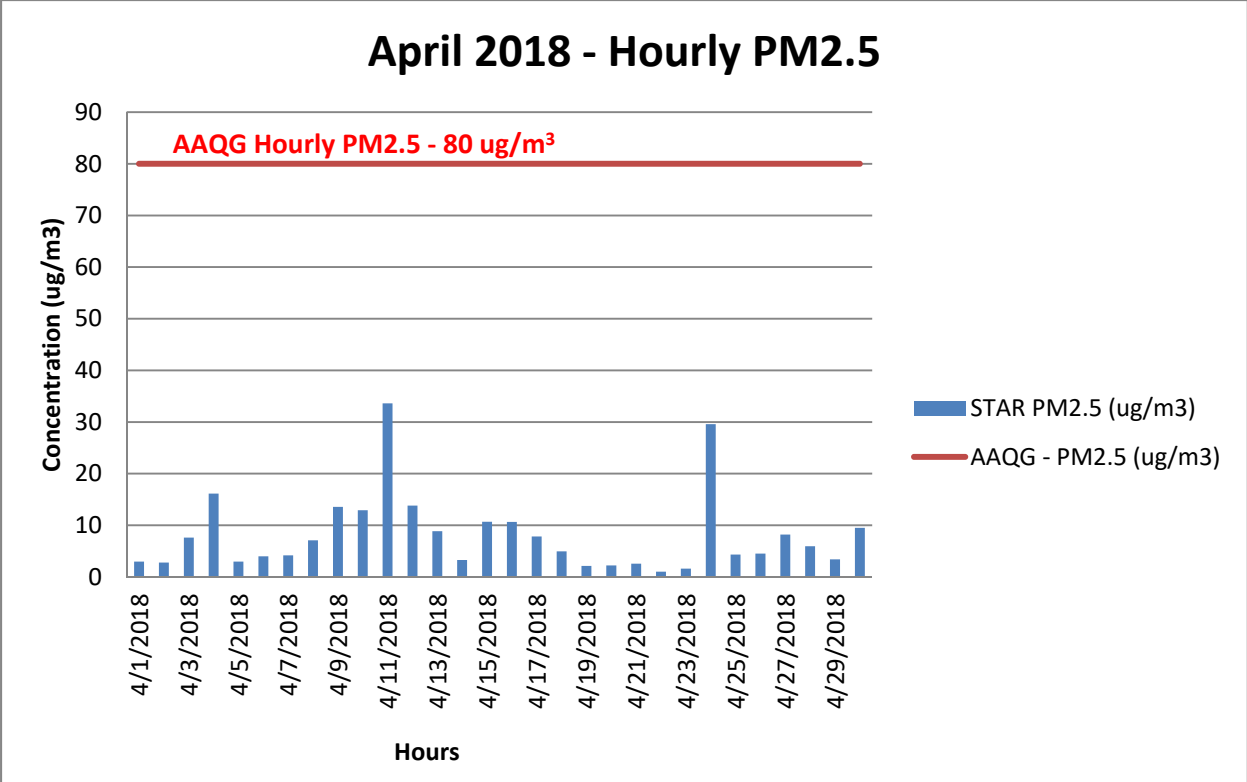
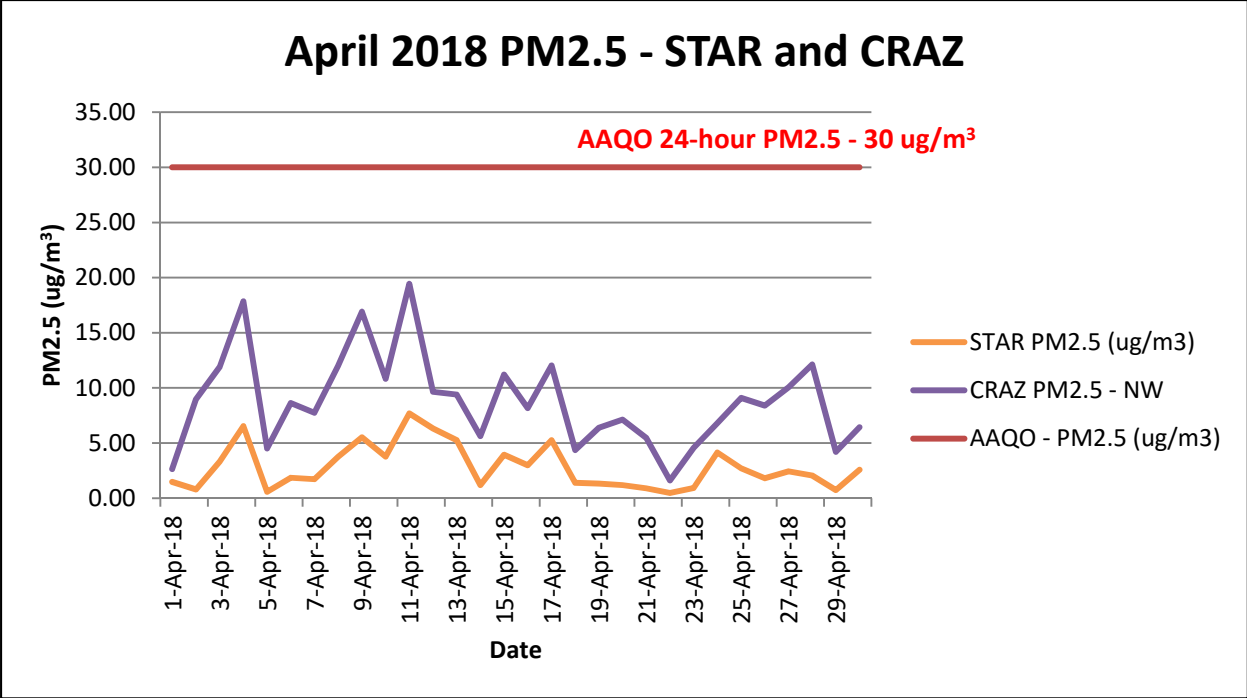


Figure 4-3: 1-hour concentrations of PM<sub>2.5</sub> STAR



4-1: CRAZ and BLV Comparison for PM<sub>2.5</sub>

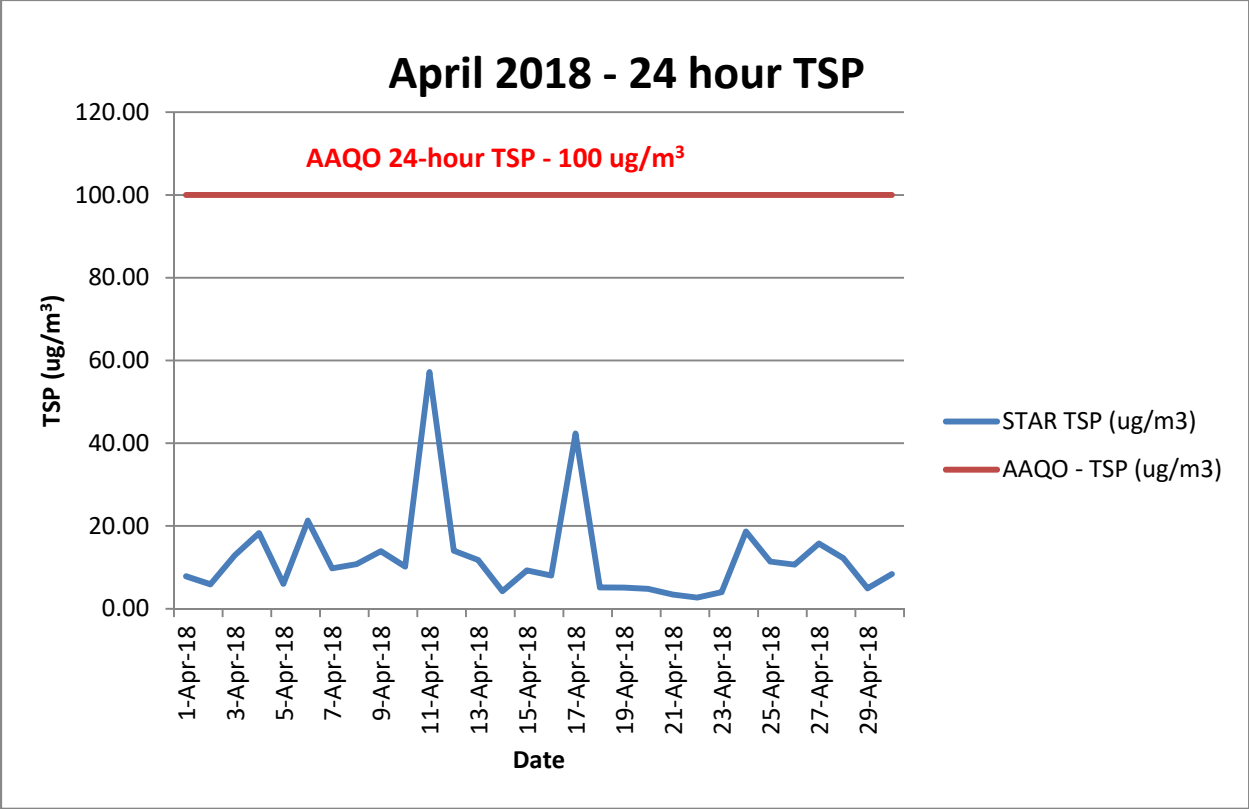


Figure 4-4: 24-hour concentrations of TSP at STAR

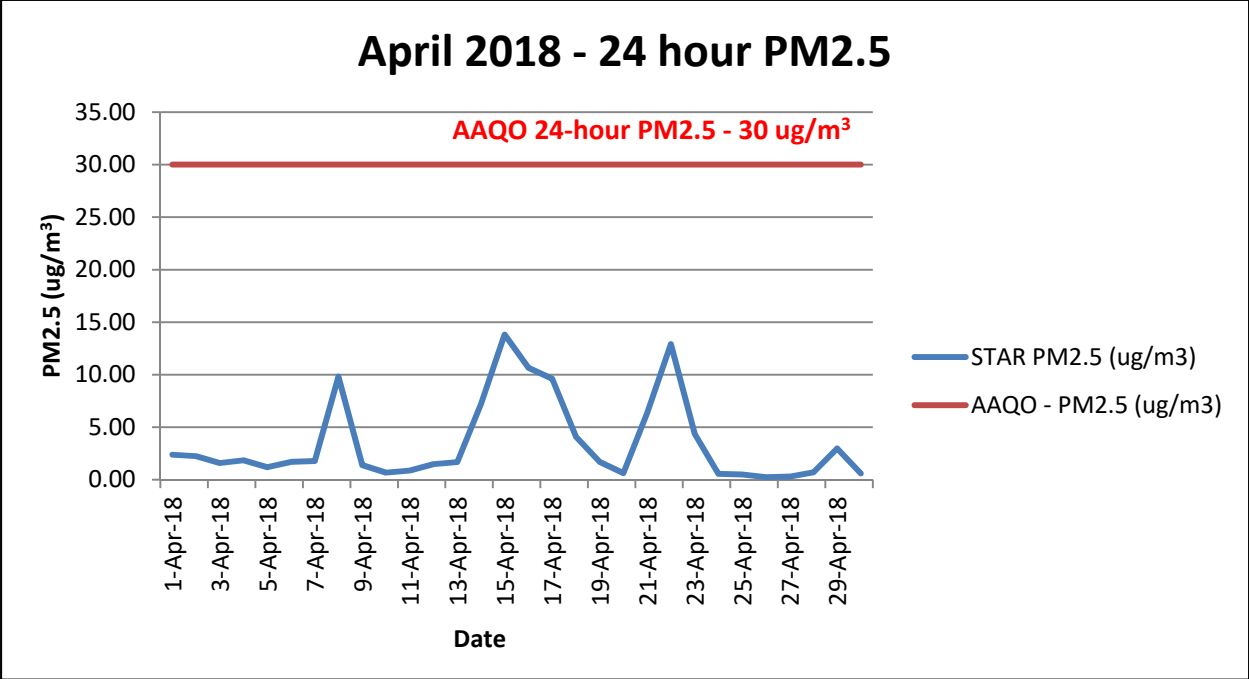


Figure 4-5: 24-hour concentrations of PM<sub>2.5</sub> at STAR

## Noise Results

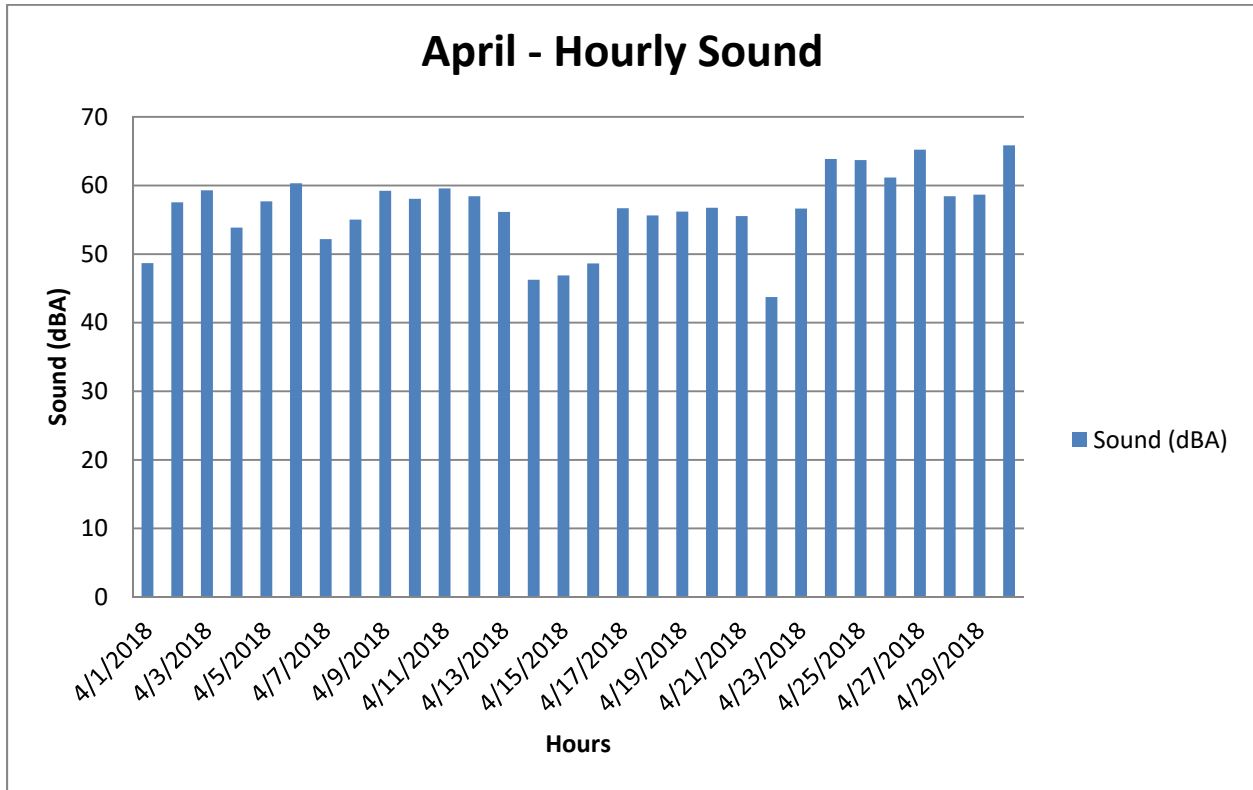


Figure 6-1: Hourly sound level at the STAR Pit

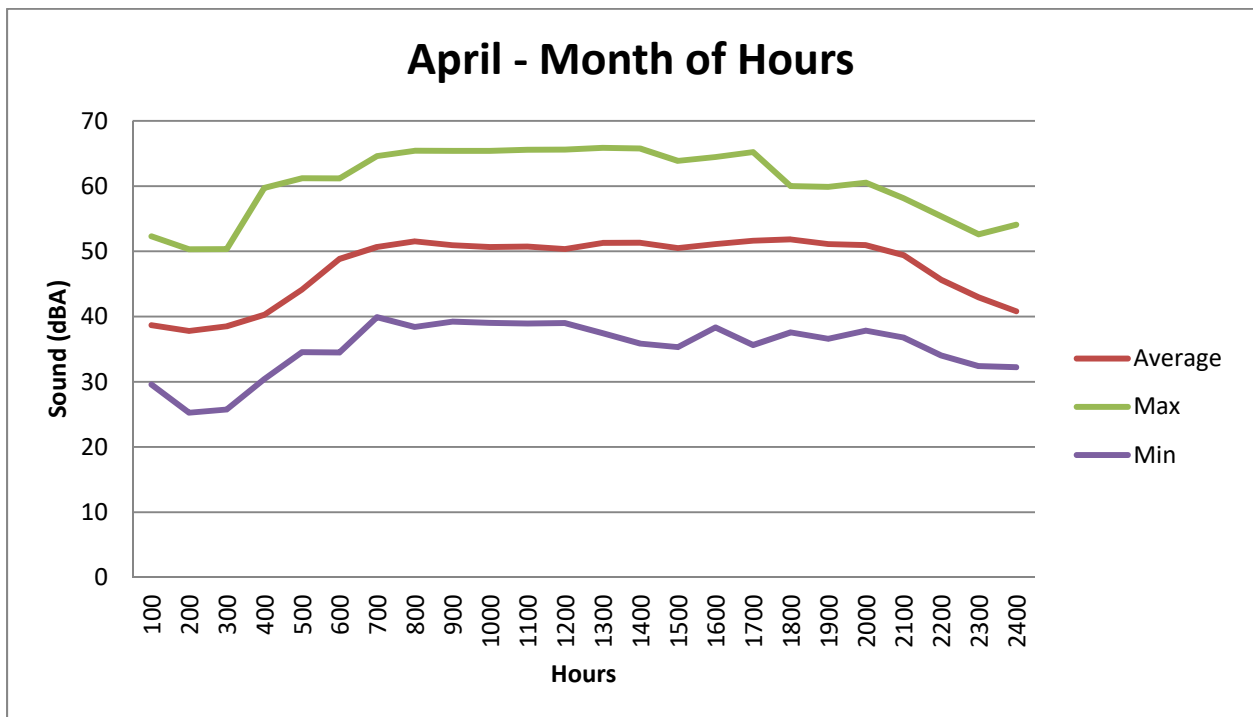


Figure 6-2: Month of Hours sound levels at the STAR Pit