

STONEY TRAIL AGGREGATE RESOURCE

BLV GROUP

Fall 2012 Community Newsletter

Overview of STAR Pit

Stoney Trail Aggregate Resource (STAR) is 1 of 7 existing gravel operations in this area. These operations supply aggregate needs across all of Calgary and surrounding area.

STAR is owned by Alberta Transportation (AT) and it is operated by the BLV Group, which is a joint venture of three of Calgary's most experienced sand and gravel pit operators.

What is "Aggregates"? It is a term that refers to the natural resource of sand & gravel, which is used to build communities including homes, roads, schools, airports, and parks.

Alberta Transportation Projects

As a result of STAR's unique organization, a variety of contractors and activities are often operating at one time. In 2012, the Alberta Transportation project "Stoney & Nose Hill Drive Interchange Upgrade" included the STAR aggregate resource as a source option for the contractor awarded the project. The successful bidder was Acciona and the project is well underway with anticipated completion by 2014. We look forward to more community improvement projects in 2013.

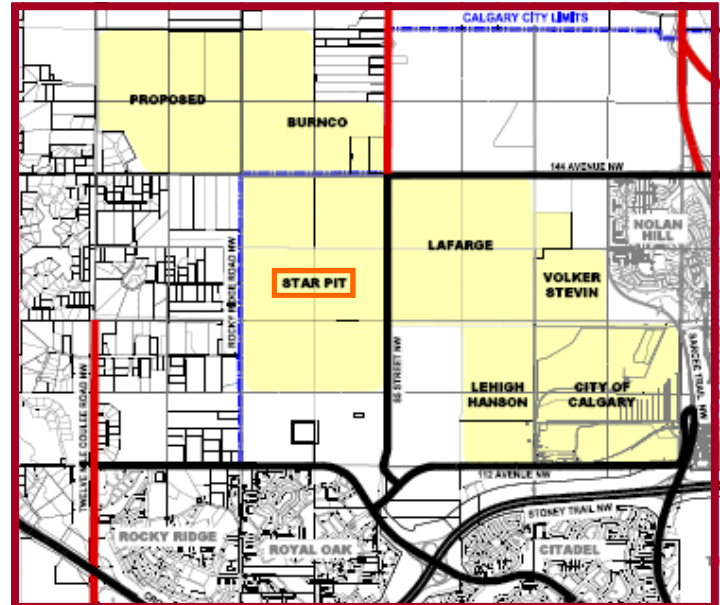
Ongoing Challenges

The BLV Group, Alberta Transportation, and the various on-site contractors recognize that despite all our efforts, there is still work to do. Improvements are generally incremental and it is only through continual focus that the various improvements will build upon themselves to produce a better end result. It is a matter of knowing what areas these are and maintaining commitment to strive for continuous improvement. Three key issues have been identified and are the focus of improvement initiatives. Please see reverse for details.

Pathway Along Rocky Ridge Road

When the STAR site was first developed by the BLV Group, Alberta Transportation designed the pathway along Rocky Ridge Road and BLV Group built it. This gift to the community has since become a popular walking area for local residents. Though the pathway is not maintained by any specific group, BLV recognizes the benefit to the community and helps out by removing garbage when it accumulates.

Contact We would like to hear from you: info@stoneytrailpit.ca www.stoneytrailpit.ca



BURNCO

LAFARGE

Volker Stevin
Contracting Ltd.

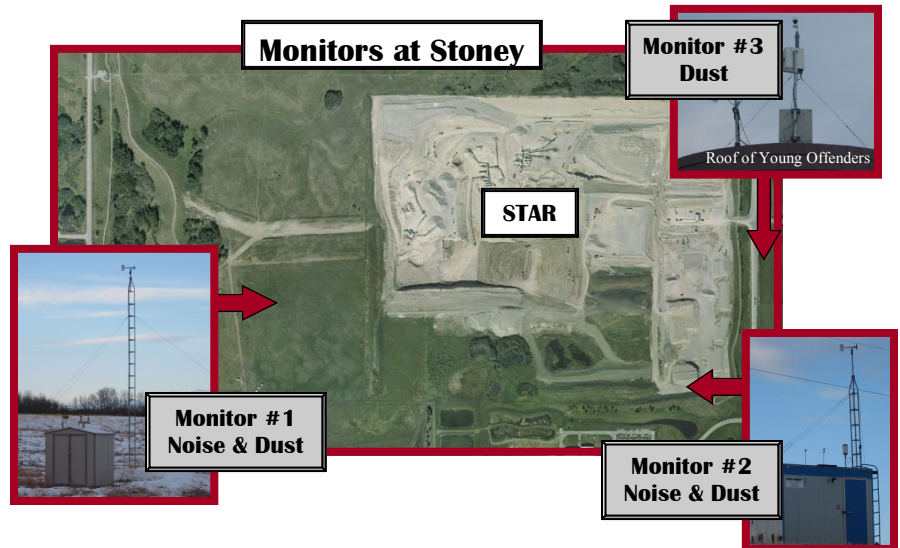
STONEY TRAIL AGGREGATE RESOURCE

BLV GROUP

Fall 2012 Community Newsletter

Sound & Dust Monitoring

In order to monitor for any impacts that the operations of Stoney Trail are having in terms of sound and dust, 3 monitors are installed around the perimeter of Stoney Trail. These stations provide data to measure progress through hourly readings to demonstrate the impact of specific activities. The monitoring stations are maintained by a third party company which specializes in this equipment and provides reports to BLV and Alberta Transportation.



Sound

- The site mining design has been developed to allow the crushing operations to occur at points on-site which are much lower than original ground level. This creates a natural barrier to limit sound from traveling to nearby residences.
- As BLV Group continues to work with the community to lessen the impact of the site operations on local stakeholders, it has been found that night time sounds can be noticeable. For this reason, examining ways to limit sounds in the evening has been a focus. This has resulted in replacing night time back-up alarms with flashing lights on all heavy equipment. Another improvement is to design truck haul routes within STAR site to shorten travel and reduce performing activities at higher elevations during the night time.
- In addition, equipment that is used at STAR site is kept in good operating condition. Generators have specialized exhaust systems to reduce sound and many of the plants that operate on-site employ sound reduction technologies, such as enclosing pieces or lining components to reduce sound created at the source.
- The site design is continuously developing as it is mined and every time a plant is mobilized, orientation is considered to optimize the direction that sound would be transmitted, such as directing generators into the pit face or toward the north, which is an area without nearby residences.

Traffic

- BLV Group and Alberta Transportation are working with the City of Calgary and other industry participants to improve the traffic flow in the area. This includes special focus on the intersection at 112th Avenue and Country Hills Blvd.
- Gravel industry partners have hired consultants to examine solutions and work with the City and stakeholders to better understand options and make improvements for the future.

Dust

- Dust is kept to a minimum with sweeping and water truck applications.
- A water truck is used to water haul roads and stockpiles and to keep roadways clear of debris.
- Crushing plants have dust suppression on product lines that tend to create fine particles.

BURNCO

LAFARGE

Volker Stevin
Contracting Ltd.