



November 7, 2017

Wes Markus
BLV Group
10511, 15th St. S.E.
Calgary, Alberta
T2H 2H5

Re: Noise Monitoring for BLV Group – Stoney Trail #1

Dear Wes Markus;

Attached are results of the monitoring for the period October 2017 for noise, TSP and PM2.5 particulates. A B&K model 2236 meter was used for noise, and an Airmetrics Minivol model portable sampler for particulates. Winds were measured with a R.M. Young Model 5103 anemometer. Precipitation was recorded with a Texas Instruments model TE25M rain gauge.

Data recovery for all parameters was 100% during the monitoring period.

There was no exceedance for the sound level.

There were 4 exceedances for both TSP and PM2.5 of the Alberta Air Quality Objective.

Please call if there are any questions regarding the results.

Yours truly,

PROMET ENVIRONMENTAL GROUP LTD.

A handwritten signature in black ink, appearing to read "Bill Murray", written over a horizontal line.

Dr. William (Bill) Murray
President

WM/NO
Cc: Travis Coates
Enc.



MONTHLY REPORT SUMMARY

Stoney Trail #1
Name/Location

BLV Group
Company

October 2017
Monitoring Period

| Continuous Ambient Monitoring | | | | |
|--------------------------------------------------|---------------------------|----------------|----------------|---------------------------------------------------|
| Parameter | % Time Operational | Average | Maximum | Number of Hours above Industrial Standards |
| Sound dB A | 100% | 63 | 71 | 0 |
| PM2.5 $\mu\text{g}/\text{m}^3$ | 100% | 67.9 | 123.9 | 4 |
| TSP $\mu\text{g}/\text{m}^3$ | 100% | 481.1 | 691.4 | 4 |
| Wind Speed km/h | 100% | 18.8 | 54.5 | - |
| Precipitation mm | 100% | - | 2.3 | - |
| Trailer Temperature | 100% | 17 | 23 | - |

Sound level is analyzed only for wind speed less than 11 km/h and precipitation less than 3 mm/hour

COMMENTS:

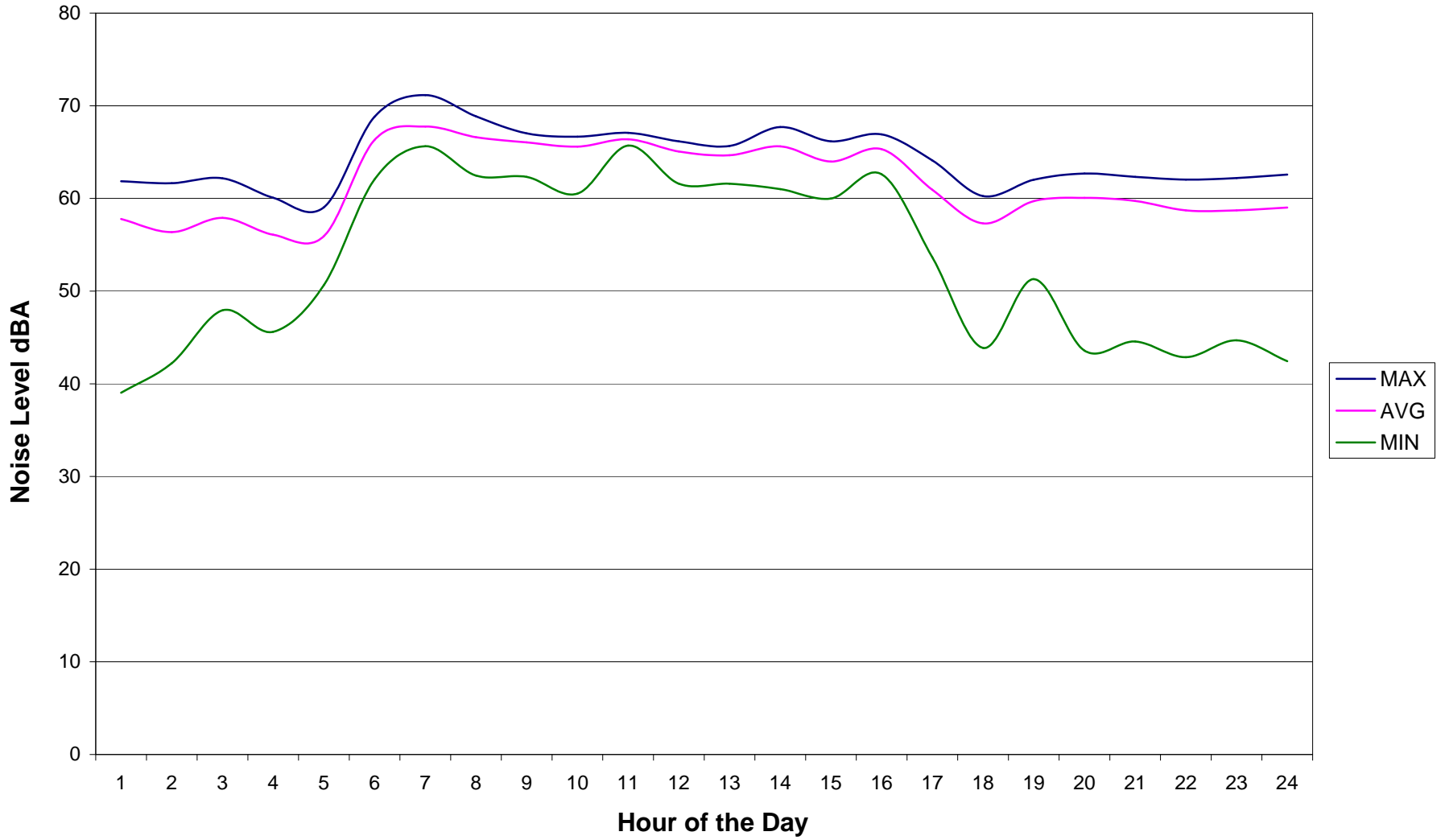
The regulation for industrial areas is 85 dB A any time.

The PM2.5 Standard is 30 $\mu\text{g}/\text{m}^3$ for the day.

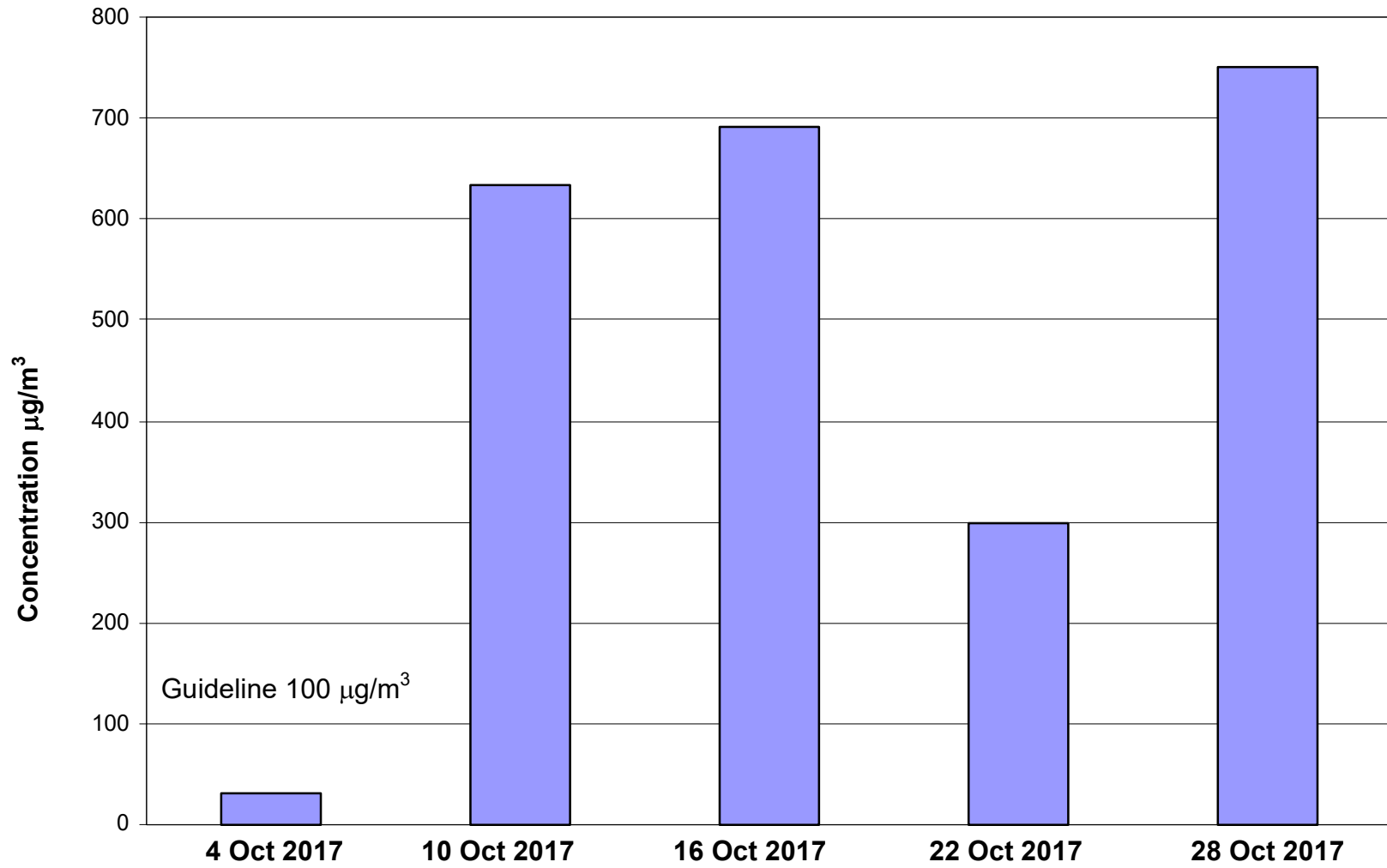
The TSP Objective is 100 $\mu\text{g}/\text{m}^3$ for the day.

One 24 hour sample of PM2.5 and TSP is taken every 6th day following the federal NAPS schedule.

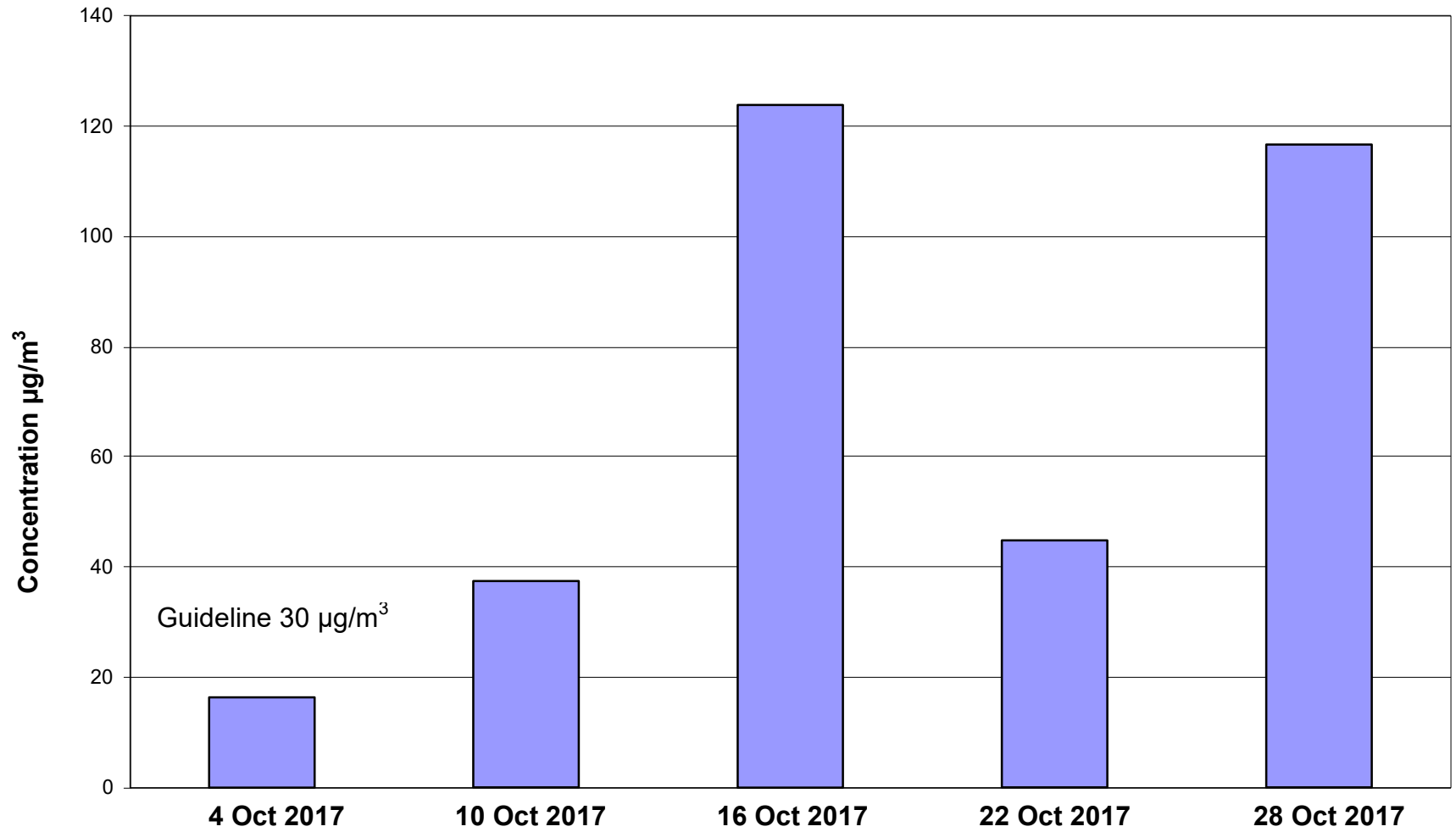
Lafarage Stoney Noise level by Hour of the day October 2017



Lafarge Stoney 1 TSP data October 2017

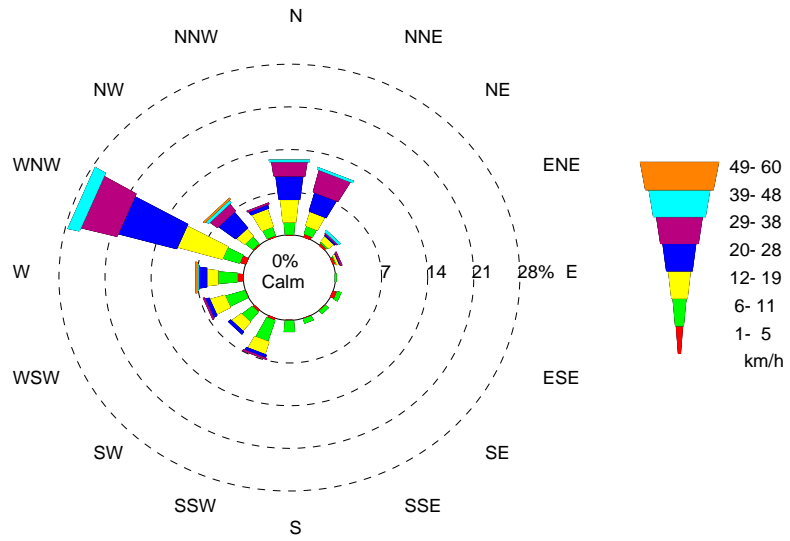


Lafarge Stoney 1 PM2.5 data October 2017



Wind rose for OCT 2017
Stoney Trail 1

Bar length is proportional to frequency of winds from its direction



PROMET

7/11/2017

SOUND LEVEL [dBA] Leq 1 hour
 BLV Group
 Stoney Trail 1
 STATION 620
 OCT 2017

| Day | Hour | | | | | | | | | | | | | | | | | | | | | | | | Avg | |
|-----|------|----|----|----|----|----|----|----|----|----|----|----|----|----|----|----|----|----|----|----|----|----|----|----|-----|----|
| | 1 | 2 | 3 | 4 | 5 | 6 | 7 | 8 | 9 | 10 | 11 | 12 | 13 | 14 | 15 | 16 | 17 | 18 | 19 | 20 | 21 | 22 | 23 | 24 | | |
| 1 | | 56 | | | | | | | | | | | | | | | | | | | | | | | 56 | |
| 2 | | | | | | | | | | | | | | | | | | | | | | | | | M | |
| 3 | | | | | | | | 63 | 62 | 61 | C | 62 | 62 | 61 | 60 | | | | 59 | 61 | 60 | | | | 68 | |
| 4 | | | | | | | | | | | | | | | 61 | 63 | 54 | 56 | 60 | 60 | 61 | 60 | 54 | 54 | 59 | |
| 5 | 56 | 56 | 57 | 56 | 58 | 64 | 67 | 65 | 65 | 65 | | | | | | | | | | | | 58 | | | 62 | |
| 6 | | | | | | | | | | | | | | | | | | | | | | | | | M | |
| 7 | | | | | | | 66 | 65 | | | | | | | | | | | | 44 | 45 | 43 | | | 59 | |
| 8 | 39 | | | | | | | | | | | | | | | | | | 44 | 51 | 46 | 45 | 45 | 45 | 46 | |
| 9 | | | | | | | | | | | | | | | | | | | | | | 45 | 45 | 42 | 44 | |
| 10 | 42 | 42 | | | 53 | 66 | 66 | 67 | 66 | 66 | 66 | 65 | 66 | 68 | 66 | | | 54 | 54 | | | | | | 57 | 63 |
| 11 | 59 | 58 | 57 | | | | | | | | | | | | | | | | 56 | 58 | 62 | 59 | 58 | 58 | 58 | 58 |
| 12 | 57 | 56 | 57 | 55 | 51 | 65 | 67 | 67 | 67 | 66 | 66 | 65 | 66 | 66 | 64 | 65 | 59 | 59 | 60 | 59 | 60 | 56 | 56 | 56 | 62 | |
| 13 | 53 | 54 | 48 | 46 | 51 | 69 | 71 | 68 | 67 | 66 | 67 | 66 | | | 66 | 66 | 59 | | | | 61 | | | | 64 | |
| 14 | | 55 | | | | | | | | | | | | | | | | | | | | | | | 55 | |
| 15 | | | | | | | | | | | | | | | | | | | | | | | | | M | |
| 16 | | | | | | | | | | 65 | | | | | | | | | | | | | | | 61 | 64 |
| 17 | 60 | | 61 | 60 | 59 | 62 | 66 | | 66 | | | | | | | | | | | | | 61 | 61 | 61 | 59 | 62 |
| 18 | | | | | | 67 | 67 | 68 | 66 | 66 | 66 | | | | | | | 61 | 56 | 61 | 59 | 59 | 61 | 59 | 63 | 64 |
| 19 | | | | | | | | | 67 | 66 | 67 | | | | | | | | | | 62 | 61 | 62 | 61 | 60 | 64 |
| 20 | 60 | | | | | 68 | 68 | | | | | | | | | | 61 | 56 | | | | | | 61 | 62 | 63 |
| 21 | 62 | 62 | 62 | | | | 67 | 65 | 67 | | | | | | | | | | | | 61 | 60 | 59 | 58 | 59 | 62 |
| 22 | 58 | 55 | 55 | | | | | | | | | | | | | | | | | | | | | | | 56 |
| 23 | | | | | | | | | | | | | | | | | | | | | | | | | | M |
| 24 | | | | | | | | | | | | | | | | | | | | | | | | | | M |
| 25 | | | | | | | | | | | | | | | | | | | | | | | | | | M |
| 26 | | 49 | 52 | 49 | 55 | 65 | | | | | | | | | | 65 | 63 | 60 | 62 | 63 | 62 | 62 | 62 | | 61 | |
| 27 | | | | | | | | | 66 | 67 | | 66 | | | | 67 | 63 | 60 | 61 | | | | | | 65 | |
| 28 | | | | | | | | | | | | | | | | | | | | | | | | | | M |
| 29 | | | | | | | | | | | | | | | | | | | | | | 57 | 56 | 57 | | 57 |
| 30 | 56 | 57 | 58 | 57 | 57 | 67 | 68 | 69 | | | | | | | | | | 64 | | | 58 | | | | 63 | |
| 31 | 57 | 55 | 55 | 55 | 53 | 66 | 67 | 67 | | | 64 | 65 | | | | | | | | | | | | | 62 | |
| AVG | 57 | 56 | 57 | 55 | 55 | 66 | 68 | 67 | 66 | 66 | 72 | 65 | 65 | 65 | 64 | 65 | 60 | 57 | 59 | 59 | 59 | 58 | 58 | 58 | | 58 |
| MAX | 62 | 62 | 62 | 60 | 59 | 69 | 71 | 69 | 67 | 67 | 84 | 66 | 66 | 68 | 66 | 67 | 64 | 60 | 62 | 63 | 62 | 62 | 62 | 63 | | 63 |
| MIN | 39 | 42 | 48 | 46 | 51 | 62 | 66 | 63 | 62 | 61 | 64 | 62 | 62 | 61 | 60 | 63 | 54 | 44 | 51 | 44 | 45 | 43 | 45 | 42 | | 42 |

*** SOUND DATA REPORTED ONLY FOR WIND SPEED < 11.5 KM/H *** C - Calibration

Monthly Average: 63 Monthly Maximum: 71

Monthly Minimum: 39

Averages are computed only when time operational > 75% Median: 60.5

*** No Exceedances of Guideline ***

SOUND METER CALIBRATIONS

| DATE | TIME | STANDARD | RESPONSE | ERROR |
|-------------|------|----------|----------|-------|
| OCT 3, 2017 | 11 | 94.0 | 93.3 | -.7 |

PRECIPITATION [mm]
 BLV Group
 Stoney Trail 1
 STATION 620
 OCT 2017

| Day | Hour | | | | | | | | | | | | | | | | | | | | | | | | Tot |
|------|------|---|---|----|---|---|---|---|---|----|----|----|-----|-----|-----|----|----|----|----|----|----|----|----|----|-----|
| | 1 | 2 | 3 | 4 | 5 | 6 | 7 | 8 | 9 | 10 | 11 | 12 | 13 | 14 | 15 | 16 | 17 | 18 | 19 | 20 | 21 | 22 | 23 | 24 | |
| 1 | 0 | 0 | 0 | 0 | 0 | 0 | 0 | 0 | 0 | 0 | 0 | 0 | 0 | 0 | 0 | 0 | 0 | 0 | 0 | 0 | 0 | 0 | 0 | 0 | 0 |
| 2 | 0 | 0 | 0 | 0 | 0 | 0 | 0 | 0 | 0 | 0 | 0 | 0 | 0 | 0 | 0 | 0 | 0 | 0 | 0 | 0 | 0 | 0 | 0 | 0 | 0 |
| 3 | 0 | 0 | 0 | 0 | 0 | 0 | 0 | 0 | 0 | 0 | 0 | 0 | 0 | 0 | 0 | 0 | 0 | 0 | 0 | 0 | 0 | 0 | 0 | 0 | 0 |
| 4 | 0 | 0 | 0 | 0 | 0 | 0 | 0 | 0 | 0 | 0 | 0 | 0 | 0 | 0 | 0 | 0 | 0 | 0 | 0 | 0 | 0 | 0 | 0 | 0 | 0 |
| 5 | 0 | 0 | 0 | 0 | 0 | 0 | 0 | 0 | 0 | 0 | 0 | 0 | 0 | 0 | 0 | 0 | 0 | 0 | 0 | 0 | 0 | 0 | 0 | 0 | 0 |
| 6 | 0 | 0 | 0 | 0 | 0 | 0 | 0 | 0 | 0 | 0 | 0 | 0 | 0 | 0 | 0 | 0 | 0 | 0 | 0 | 0 | 0 | 0 | 0 | 0 | 0 |
| 7 | 0 | 0 | 0 | .3 | 0 | 0 | 0 | 0 | 0 | 0 | 0 | 0 | 0 | 0 | 0 | 0 | 0 | 0 | 0 | 0 | 0 | 0 | 0 | 0 | .3 |
| 8 | 0 | 0 | 0 | 0 | 0 | 0 | 0 | 0 | 0 | 0 | 0 | 0 | 0 | 0 | 0 | 0 | 0 | 0 | 0 | 0 | 0 | 0 | 0 | 0 | 0 |
| 9 | 0 | 0 | 0 | 0 | 0 | 0 | 0 | 0 | 0 | 0 | 0 | 0 | 0 | 0 | 0 | 0 | 0 | 0 | 0 | 0 | 0 | 0 | 0 | 0 | 0 |
| 10 | 0 | 0 | 0 | 0 | 0 | 0 | 0 | 0 | 0 | 0 | 0 | 0 | 0 | 0 | 0 | 0 | 0 | 0 | 0 | 0 | 0 | 0 | 0 | 0 | 0 |
| 11 | 0 | 0 | 0 | 0 | 0 | 0 | 0 | 0 | 0 | 0 | 0 | 0 | 0 | 0 | 0 | 0 | 0 | 0 | 0 | 0 | 0 | 0 | 0 | 0 | 0 |
| 12 | 0 | 0 | 0 | 0 | 0 | 0 | 0 | 0 | 0 | 0 | 0 | 0 | 0 | 0 | 0 | 0 | 0 | 0 | 0 | 0 | 0 | 0 | 0 | 0 | 0 |
| 13 | 0 | 0 | 0 | 0 | 0 | 0 | 0 | 0 | 0 | 0 | 0 | 0 | 0 | 0 | 0 | 0 | 0 | 0 | 0 | 0 | 0 | 0 | 0 | 0 | 0 |
| 14 | 0 | 0 | 0 | 0 | 0 | 0 | 0 | 0 | 0 | 0 | 0 | 0 | 0 | 0 | 0 | 0 | 0 | 0 | 0 | 0 | 0 | 0 | 0 | 0 | 0 |
| 15 | 0 | 0 | 0 | 0 | 0 | 0 | 0 | 0 | 0 | 0 | 0 | 0 | 0 | 0 | 0 | 0 | 0 | 0 | 0 | 0 | 0 | 0 | 0 | 0 | 0 |
| 16 | 0 | 0 | 0 | 0 | 0 | 0 | 0 | 0 | 0 | 0 | 0 | 0 | 0 | 0 | 0 | 0 | 0 | 0 | 0 | 0 | 0 | 0 | 0 | 0 | 0 |
| 17 | 0 | 0 | 0 | 0 | 0 | 0 | 0 | 0 | 0 | 0 | 0 | 0 | 0 | 0 | 0 | 0 | 0 | 0 | .4 | 0 | 0 | 0 | 0 | 0 | .4 |
| 18 | 0 | 0 | 0 | 0 | 0 | 0 | 0 | 0 | 0 | 0 | 0 | 0 | 0 | 0 | 0 | 0 | 0 | 0 | 0 | 0 | 0 | 0 | 0 | 0 | 0 |
| 19 | 0 | 0 | 0 | 0 | 0 | 0 | 0 | 0 | 0 | 0 | 0 | 0 | 0 | 0 | 0 | 0 | 0 | 0 | 0 | 0 | 0 | 0 | 0 | 0 | 0 |
| 20 | 0 | 0 | 0 | 0 | 0 | 0 | 0 | 0 | 0 | 0 | 0 | 0 | 0 | 0 | 0 | 0 | 0 | 0 | 0 | 0 | 0 | 0 | 0 | 0 | 0 |
| 21 | 0 | 0 | 0 | 0 | 0 | 0 | 0 | 0 | 0 | 0 | 0 | 0 | 0 | 0 | 0 | 0 | 0 | 0 | 0 | 0 | 0 | 0 | 0 | 0 | 0 |
| 22 | 0 | 0 | 0 | 0 | 0 | 0 | 0 | 0 | 0 | 0 | 0 | 0 | 0 | 0 | 0 | 0 | 0 | 0 | 0 | 0 | 0 | 0 | 0 | 0 | 0 |
| 23 | 0 | 0 | 0 | 0 | 0 | 0 | 0 | 0 | 0 | 0 | 0 | 0 | 0 | 0 | 0 | 0 | 0 | 0 | 0 | 0 | 0 | 0 | 0 | 0 | 0 |
| 24 | 0 | 0 | 0 | 0 | 0 | 0 | 0 | 0 | 0 | 0 | 0 | 0 | 0 | 0 | 0 | 0 | 0 | 0 | 0 | 0 | 0 | 0 | 0 | 0 | 0 |
| 25 | 0 | 0 | 0 | 0 | 0 | 0 | 0 | 0 | 0 | 0 | 0 | 0 | 0 | 0 | 0 | 0 | 0 | 0 | 0 | 0 | 0 | 0 | 0 | 0 | 0 |
| 26 | 0 | 0 | 0 | 0 | 0 | 0 | 0 | 0 | 0 | 0 | 0 | 0 | 0 | 0 | 0 | 0 | 0 | 0 | 0 | 0 | 0 | 0 | 0 | 0 | 0 |
| 27 | 0 | 0 | 0 | 0 | 0 | 0 | 0 | 0 | 0 | 0 | 0 | 0 | 0 | 0 | 0 | 0 | 0 | 0 | 0 | 0 | 0 | 0 | 0 | 0 | 0 |
| 28 | 0 | 0 | 0 | 0 | 0 | 0 | 0 | 0 | 0 | 0 | 0 | 0 | 0 | 0 | 0 | 0 | 0 | 0 | 0 | 0 | 0 | 0 | 0 | 0 | 0 |
| 29 | 0 | 0 | 0 | 0 | 0 | 0 | 0 | 0 | 0 | 0 | 0 | 0 | 0 | 0 | 0 | 0 | 0 | 0 | 0 | 0 | 0 | 0 | 0 | 0 | 0 |
| 30 | 0 | 0 | 0 | 0 | 0 | 0 | 0 | 0 | 0 | 0 | 0 | 0 | 0 | 0 | 0 | 0 | 0 | 0 | 0 | 0 | 0 | 0 | 0 | 0 | 0 |
| 31 | 0 | 0 | 0 | 0 | 0 | 0 | 0 | 0 | 0 | 0 | 0 | 0 | 1.1 | 1.6 | 2.3 | .2 | .3 | 0 | 0 | 0 | 0 | 0 | 0 | 0 | 5.5 |
| TOTL | 0 | 0 | 0 | .3 | 0 | 0 | 0 | 0 | 0 | 0 | 0 | 0 | 1.1 | 1.7 | 2.4 | .2 | .3 | .4 | 0 | 0 | 0 | 0 | 0 | 0 | |
| MAX | 0 | 0 | 0 | .3 | 0 | 0 | 0 | 0 | 0 | 0 | 0 | 0 | 1.1 | 1.6 | 2.3 | .2 | .3 | .4 | 0 | 0 | 0 | 0 | 0 | 0 | |

Monthly Total: 6 Maximum in an hour: 2.3
 Year to Date: 162

TRAILER TEMPERATURE
 BLV Group
 Stoney Trail 1
 STATION 620
 OCT 2017

| Day | Hour | | | | | | | | | | | | | | | | | | | | | | | | Avg | |
|-----|------|----|----|----|----|----|----|----|----|----|----|----|----|----|----|----|----|----|----|----|----|----|----|----|-----|----|
| | 1 | 2 | 3 | 4 | 5 | 6 | 7 | 8 | 9 | 10 | 11 | 12 | 13 | 14 | 15 | 16 | 17 | 18 | 19 | 20 | 21 | 22 | 23 | 24 | | |
| 1 | 18 | 18 | 19 | 18 | 18 | 18 | 18 | 18 | 17 | 17 | 16 | 17 | 17 | 17 | 17 | 16 | 16 | 16 | 15 | 15 | 15 | 15 | 15 | 15 | 17 | |
| 2 | 15 | 15 | 14 | 14 | 14 | 13 | 13 | 13 | 13 | 14 | 15 | 14 | 13 | 13 | 13 | 13 | 13 | 13 | 12 | 11 | 11 | 11 | 11 | 13 | | |
| 3 | 12 | 12 | 13 | 13 | 14 | 14 | 14 | 16 | 17 | 17 | 19 | 19 | 19 | 19 | 20 | 20 | 20 | 20 | 20 | 19 | 19 | 19 | 19 | 17 | | |
| 4 | 19 | 20 | 20 | 20 | 20 | 20 | 20 | 20 | 20 | 20 | 20 | 21 | 21 | 22 | 22 | 22 | 23 | 23 | 23 | 23 | 23 | 22 | 22 | 21 | 21 | |
| 5 | 21 | 20 | 20 | 19 | 19 | 18 | 18 | 18 | 18 | 19 | 19 | 20 | 21 | 21 | 22 | 22 | 22 | 23 | 23 | 23 | 22 | 22 | 22 | 22 | 21 | |
| 6 | 21 | 21 | 21 | 21 | 20 | 20 | 20 | 20 | 20 | 20 | 20 | 20 | 20 | 20 | 20 | 20 | 21 | 21 | 20 | 20 | 20 | 19 | 19 | 20 | | |
| 7 | 19 | 18 | 18 | 18 | 18 | 18 | 18 | 17 | 18 | 18 | 18 | 18 | 18 | 18 | 18 | 18 | 18 | 18 | 18 | 17 | 17 | 16 | 16 | 18 | | |
| 8 | 15 | 15 | 14 | 14 | 13 | 13 | 12 | 11 | 11 | 11 | 11 | 12 | 13 | 13 | 13 | 14 | 14 | 14 | 15 | 15 | 15 | 15 | 15 | 13 | | |
| 9 | 15 | 15 | 15 | 15 | 15 | 15 | 15 | 15 | 15 | 15 | 16 | 16 | 16 | 16 | 16 | 16 | 16 | 16 | 16 | 16 | 16 | 16 | 16 | 15 | 15 | |
| 10 | 16 | 16 | 16 | 16 | 16 | 17 | 17 | 17 | 18 | 18 | 19 | 19 | 19 | 20 | 20 | 20 | 20 | 20 | 20 | 19 | 18 | 18 | 18 | 18 | 18 | |
| 11 | 18 | 17 | 17 | 16 | 16 | 15 | 14 | 13 | 14 | 14 | 14 | 14 | 14 | 14 | 14 | 14 | 14 | 15 | 15 | 15 | 16 | 16 | 16 | 15 | 15 | |
| 12 | 16 | 16 | 16 | 16 | 16 | 16 | 16 | 16 | 17 | 17 | 17 | 18 | 18 | 18 | 18 | 18 | 19 | 18 | 18 | 18 | 17 | 17 | 17 | 17 | 17 | |
| 13 | 17 | 16 | 16 | 16 | 16 | 16 | 16 | 16 | 16 | 16 | 16 | 17 | 18 | 18 | 18 | 19 | 19 | 19 | 18 | 18 | 17 | 17 | 17 | 16 | 17 | |
| 14 | 16 | 16 | 16 | 16 | 16 | 16 | 16 | 16 | 16 | 16 | 16 | 16 | 17 | 17 | 17 | 17 | 17 | 17 | 17 | 17 | 17 | 17 | 17 | 17 | 17 | |
| 15 | 17 | 17 | 17 | 17 | 17 | 17 | 17 | 17 | 17 | 17 | 17 | 18 | 18 | 18 | 18 | 18 | 18 | 18 | 18 | 18 | 18 | 18 | 18 | 18 | 17 | |
| 16 | 18 | 18 | 18 | 18 | 18 | 19 | 19 | 19 | 19 | 19 | 19 | 20 | 20 | 21 | 21 | 21 | 22 | 22 | 22 | 22 | 22 | 22 | 21 | 21 | 20 | |
| 17 | 21 | 20 | 20 | 19 | 19 | 18 | 18 | 18 | 18 | 18 | 19 | 19 | 20 | 20 | 20 | 21 | 21 | 19 | 18 | 18 | 18 | 18 | 17 | 17 | 19 | |
| 18 | 17 | 17 | 17 | 17 | 16 | 16 | 16 | 16 | 17 | 17 | 18 | 18 | 18 | 18 | 18 | 18 | 18 | 18 | 18 | 18 | 18 | 18 | 18 | 17 | 17 | |
| 19 | 17 | 18 | 18 | 18 | 18 | 18 | 18 | 18 | 18 | 18 | 19 | 19 | 19 | 20 | 20 | 20 | 20 | 21 | 20 | 20 | 20 | 20 | 19 | 19 | 19 | |
| 20 | 18 | 18 | 18 | 18 | 18 | 18 | 17 | 17 | 17 | 16 | 16 | 16 | 16 | 16 | 16 | 16 | 16 | 17 | 17 | 16 | 16 | 16 | 17 | 17 | 17 | |
| 21 | 17 | 17 | 17 | 17 | 17 | 17 | 17 | 17 | 17 | 18 | 18 | 18 | 18 | 18 | 18 | 18 | 18 | 18 | 18 | 18 | 18 | 18 | 18 | 18 | 18 | |
| 22 | 18 | 18 | 18 | 18 | 19 | 19 | 19 | 19 | 19 | 20 | 20 | 20 | 20 | 20 | 20 | 20 | 20 | 20 | 20 | 20 | 20 | 19 | 19 | 19 | 19 | |
| 23 | 19 | 19 | 18 | 18 | 18 | 17 | 17 | 17 | 17 | 18 | 18 | 19 | 19 | 19 | 19 | 19 | 19 | 19 | 19 | 19 | 18 | 18 | 18 | 18 | 18 | |
| 24 | 18 | 18 | 18 | 18 | 18 | 18 | 18 | 18 | 18 | 18 | 19 | 19 | 19 | 19 | 19 | 19 | 19 | 19 | 19 | 19 | 19 | 19 | 19 | 19 | 19 | |
| 25 | 19 | 19 | 18 | 18 | 18 | 18 | 18 | 18 | 18 | 19 | 19 | 19 | 18 | 17 | 16 | 15 | 14 | 13 | 12 | 12 | 12 | 12 | 12 | 12 | 16 | |
| 26 | 12 | 13 | 13 | 13 | 14 | 14 | 14 | 14 | 14 | 15 | 16 | 16 | 17 | 17 | 17 | 17 | 17 | 17 | 17 | 17 | 17 | 17 | 17 | 15 | 15 | |
| 27 | 17 | 17 | 17 | 17 | 17 | 17 | 17 | 17 | 17 | 17 | 18 | 18 | 19 | 19 | 19 | 20 | 20 | 20 | 20 | 20 | 20 | 20 | 19 | 19 | 18 | |
| 28 | 19 | 19 | 20 | 20 | 20 | 20 | 20 | 20 | 20 | 20 | 21 | 21 | 21 | 22 | 22 | 22 | 22 | 22 | 22 | 21 | 21 | 20 | 18 | 17 | 16 | 20 |
| 29 | 16 | 15 | 15 | 15 | 14 | 14 | 13 | 13 | 13 | 14 | 14 | 14 | 14 | 14 | 14 | 14 | 14 | 14 | 15 | 15 | 15 | 15 | 16 | 16 | 14 | |
| 30 | 16 | 16 | 16 | 16 | 16 | 16 | 16 | 16 | 16 | 17 | 17 | 17 | 17 | 17 | 17 | 17 | 17 | 17 | 17 | 17 | 17 | 17 | 17 | 17 | 17 | |
| 31 | 17 | 17 | 17 | 17 | 17 | 17 | 17 | 17 | 17 | 17 | 17 | 17 | 17 | 17 | 16 | 16 | 16 | 16 | 16 | 16 | 16 | 16 | 16 | 16 | 17 | |
| AVG | 17 | 17 | 17 | 17 | 17 | 17 | 17 | 17 | 17 | 17 | 17 | 17 | 18 | 18 | 18 | 18 | 18 | 18 | 18 | 18 | 17 | 17 | 17 | 17 | 17 | |
| MAX | 21 | 21 | 21 | 21 | 20 | 20 | 20 | 20 | 20 | 20 | 21 | 21 | 21 | 22 | 22 | 22 | 23 | 23 | 23 | 23 | 23 | 22 | 22 | 22 | 22 | |
| MIN | 12 | 12 | 13 | 13 | 13 | 13 | 12 | 11 | 11 | 11 | 11 | 11 | 12 | 13 | 13 | 13 | 13 | 13 | 12 | 12 | 11 | 11 | 11 | 11 | 11 | |

Monthly Average: 17 Monthly Maximum: 23 Monthly Minimum: 11