

Ambient Air and Sound
Monthly Report

STONEY TRAIL AGGREGATE RESOURCE

BURNCO

LAFARGE



Volker Stevin
Contracting Ltd.

June 2018

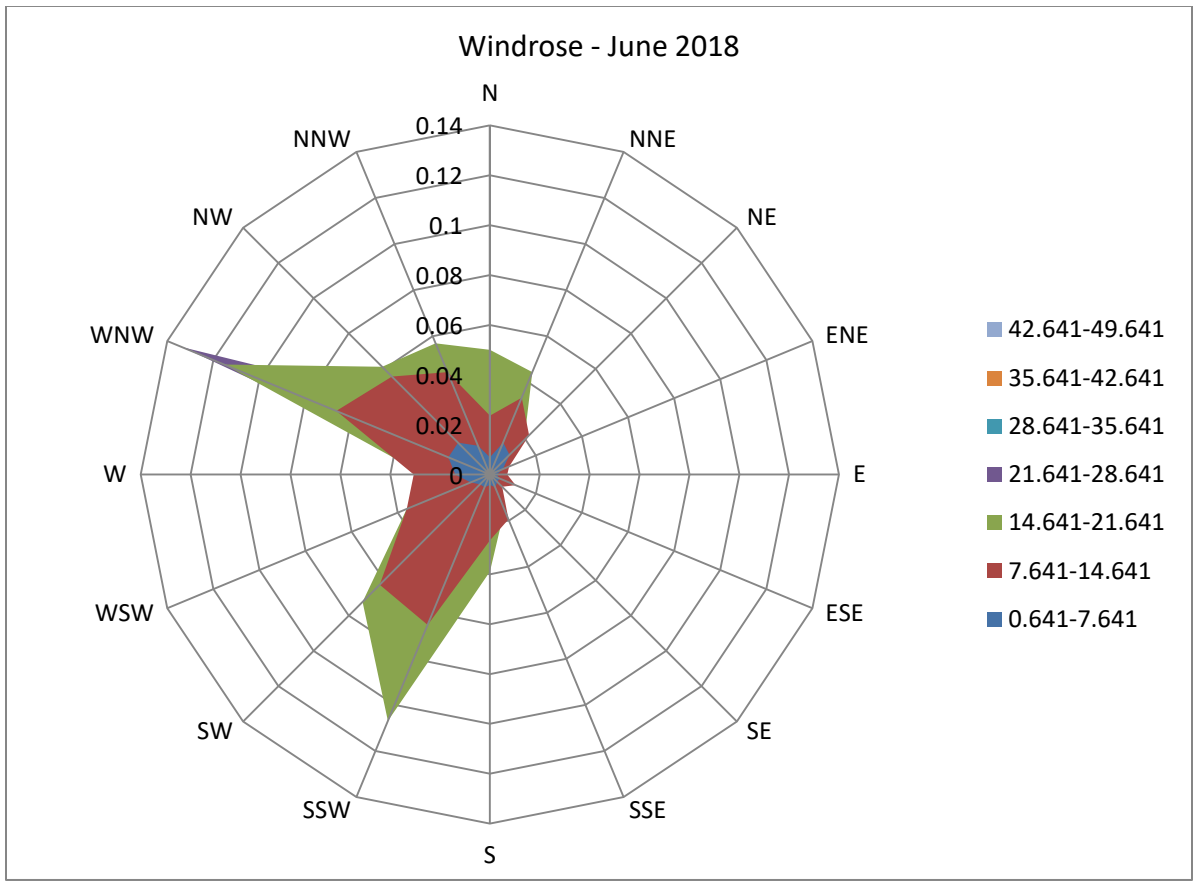


Figure 4-2: June 2018 wind rose from the scale house station

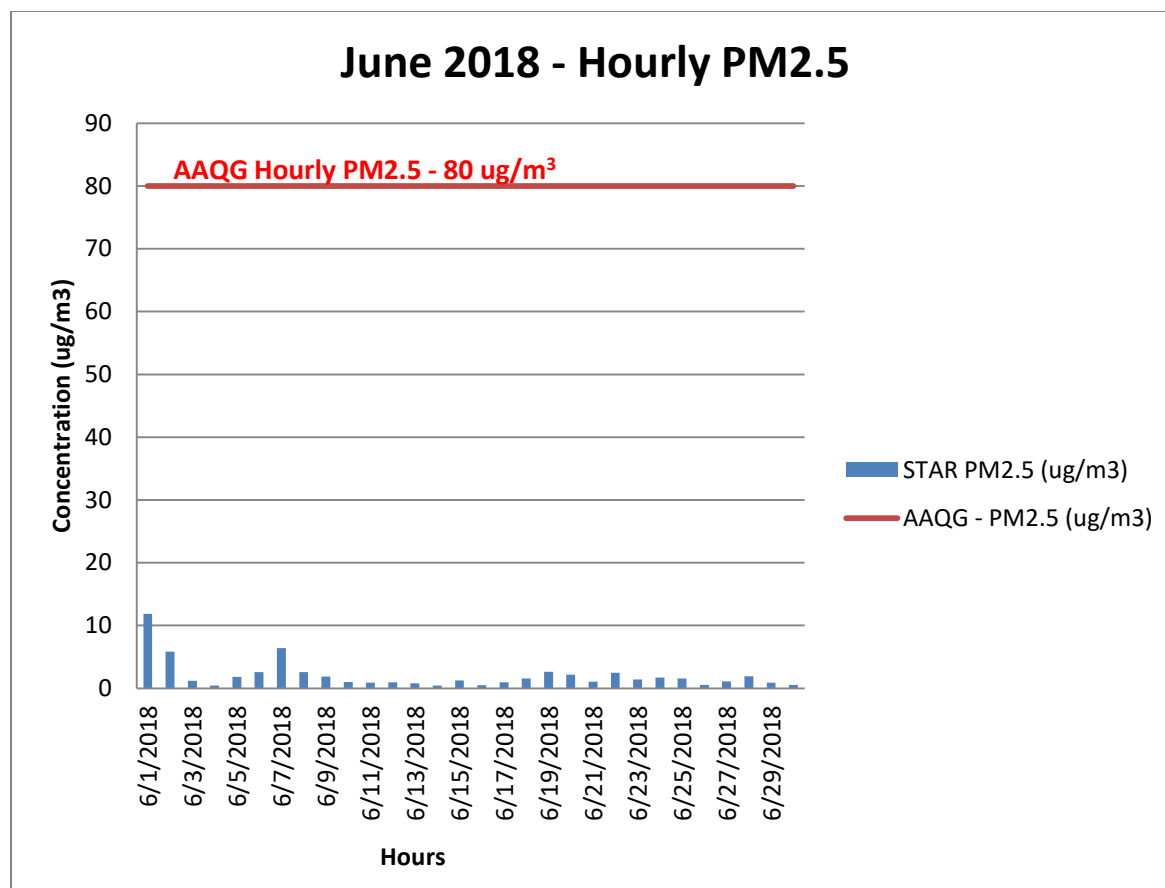


Figure 4-3: 1-hour concentrations of PM_{2.5} STAR

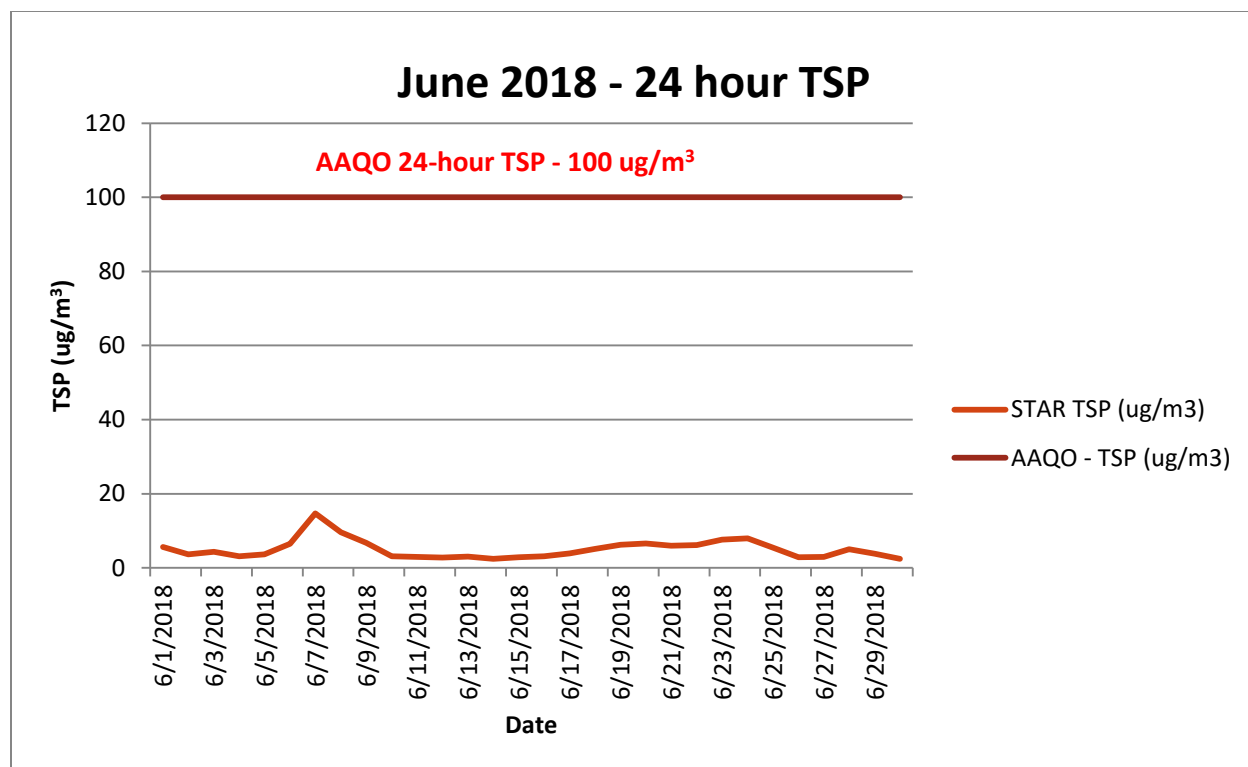


Figure 4-4: 24-hour concentrations of TSP at STAR

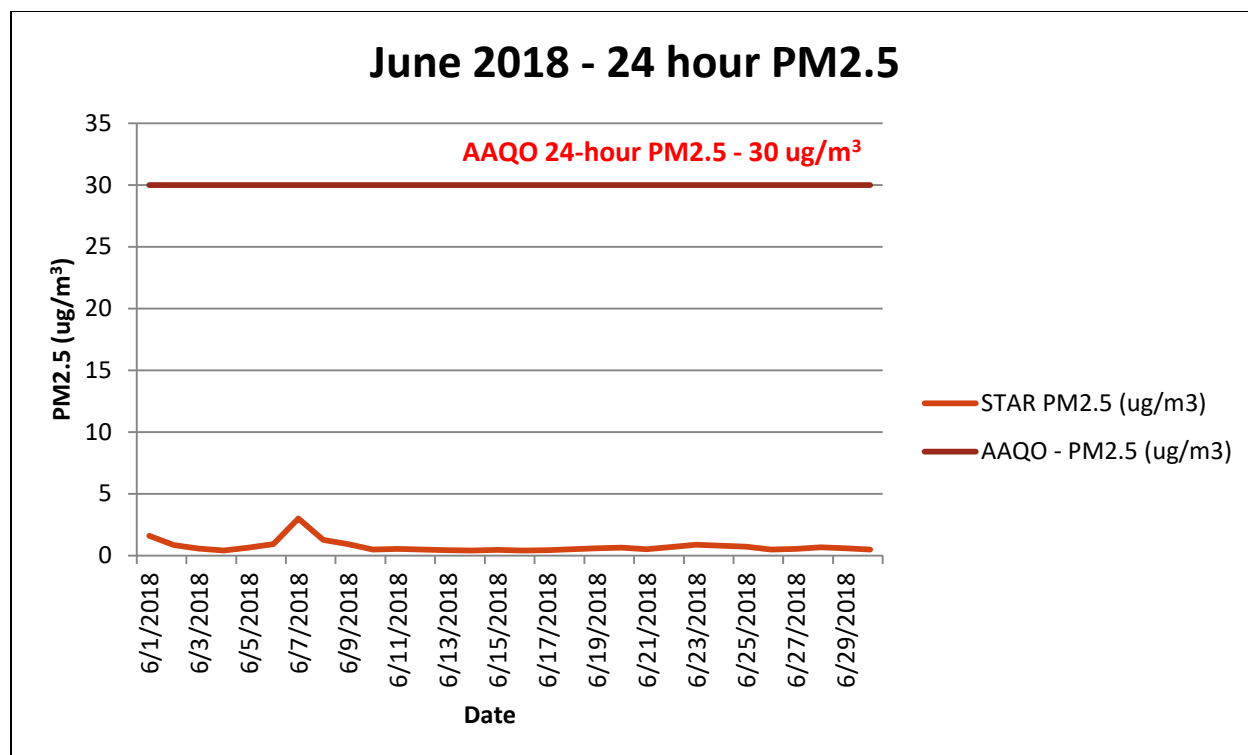


Figure 4-5: 24-hour concentrations of PM_{2.5} at STAR

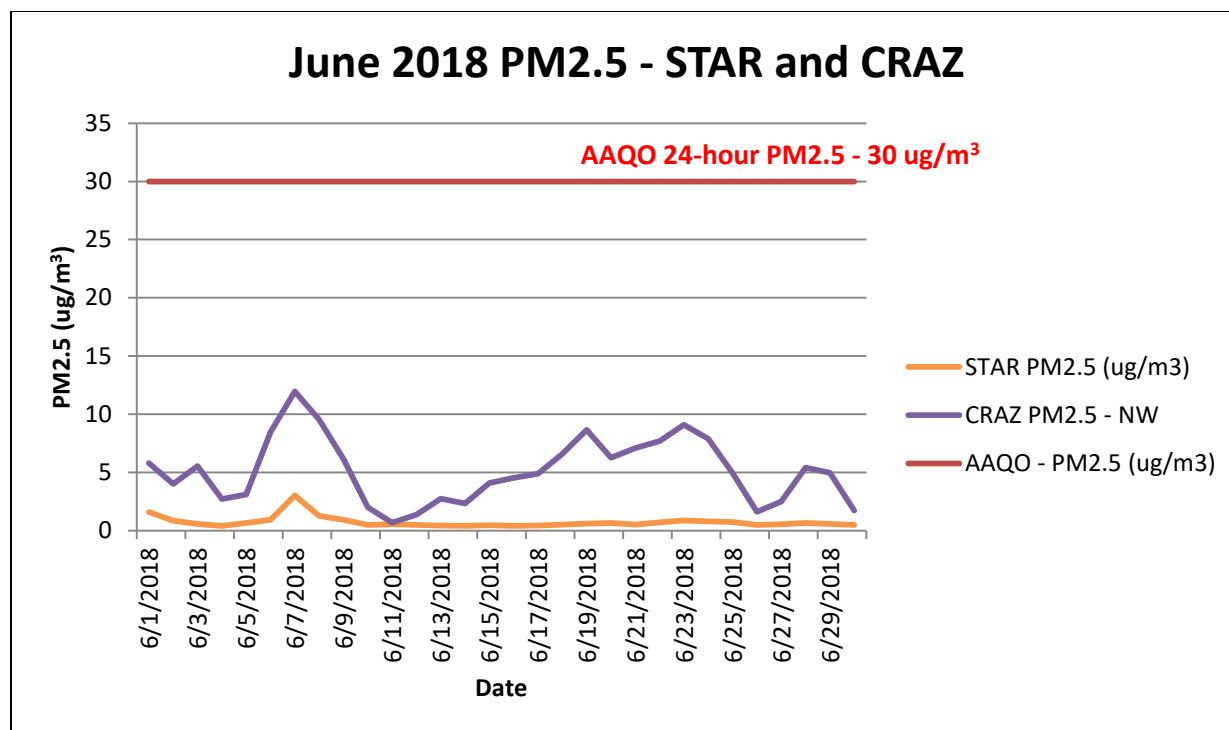


Figure 0-3: CRAZ and BLV Comparison for PM2.5

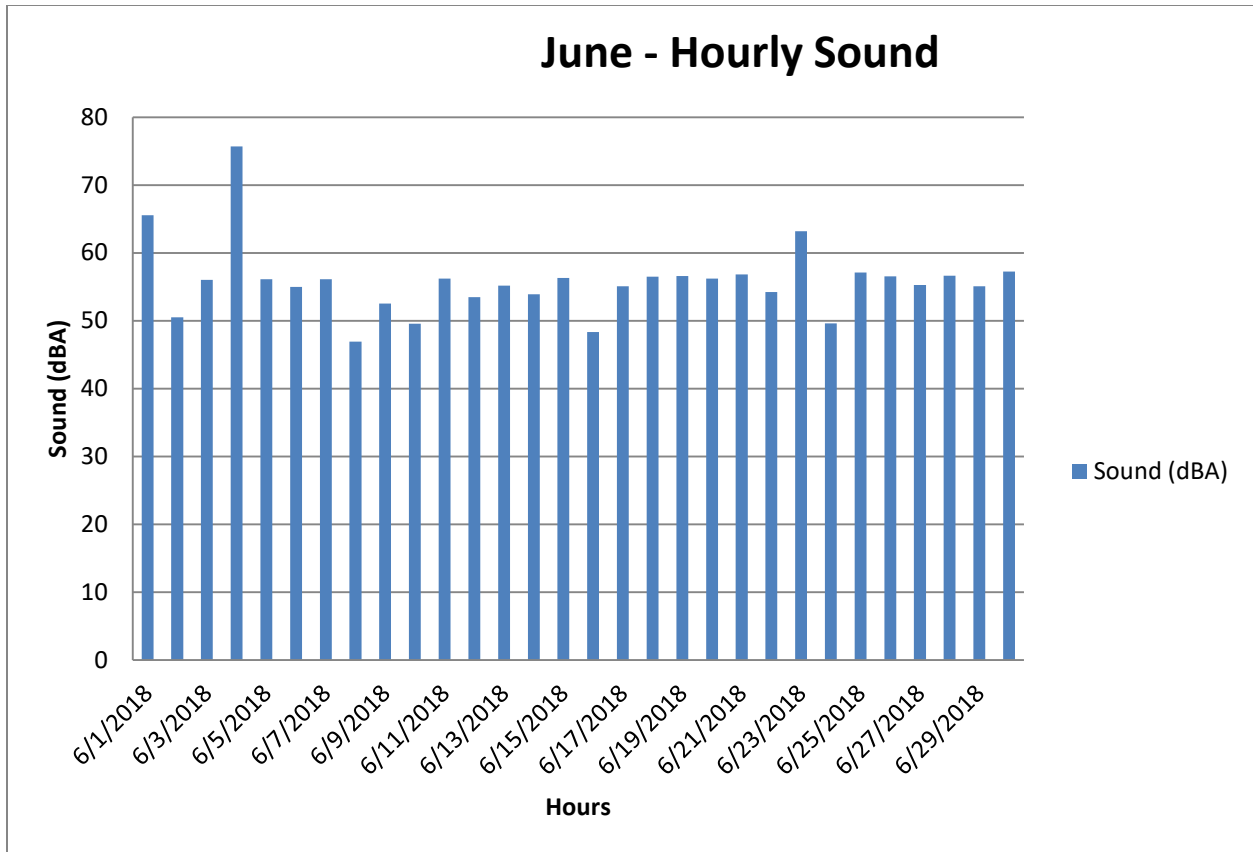


Figure 0-1: Hourly sound level at the STAR Pit

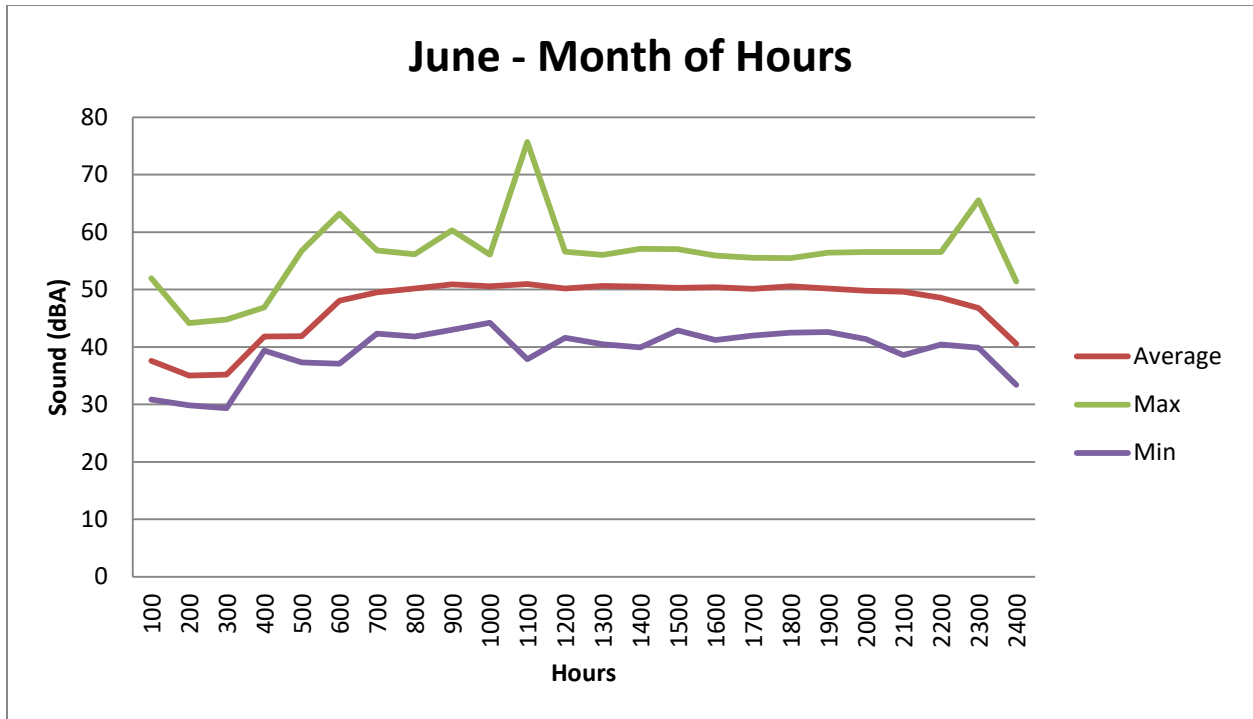


Figure 0-2: Month of Hours sound levels at the STAR Pit