

Ambient Air and Sound  
Monthly Report

**STONEY TRAIL AGGREGATE RESOURCE**

**BURNCO**

**LAFARGE**



**Volker Stevin**  
Contracting Ltd.

May 2018

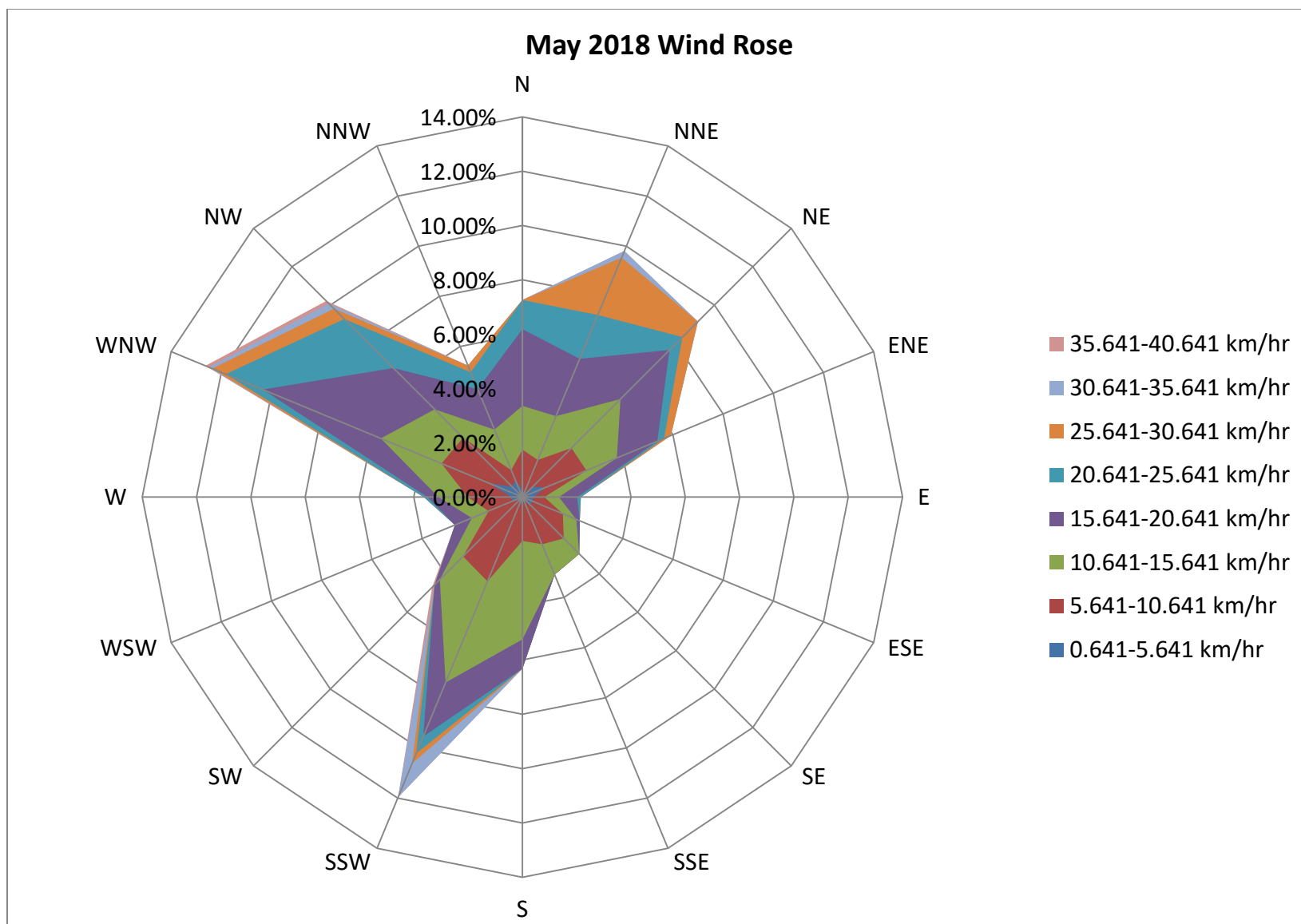


Figure.-2: May 2018 wind rose from the scale house station

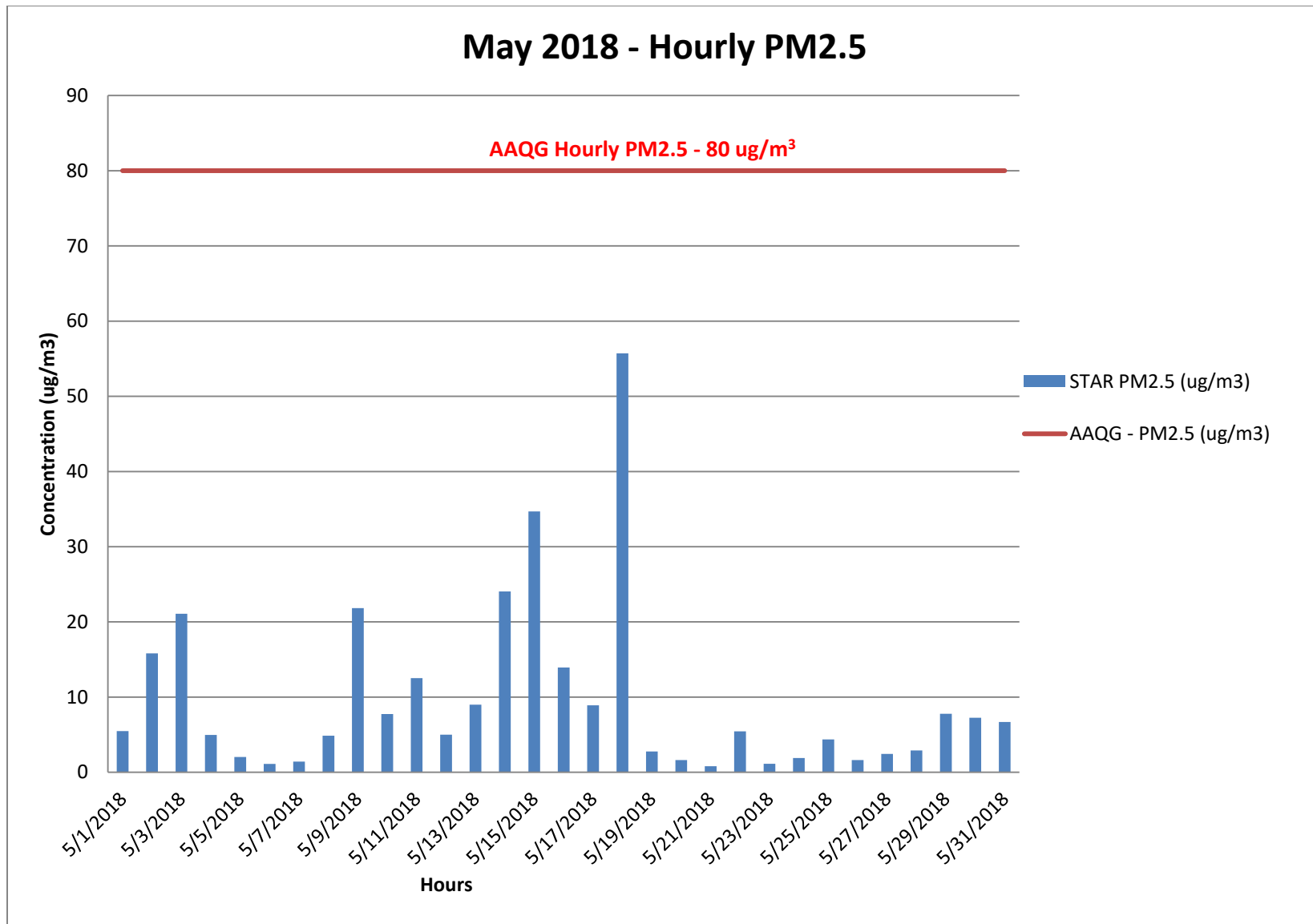


Figure-3: 1-hour concentrations of PM<sub>2.5</sub> STAR

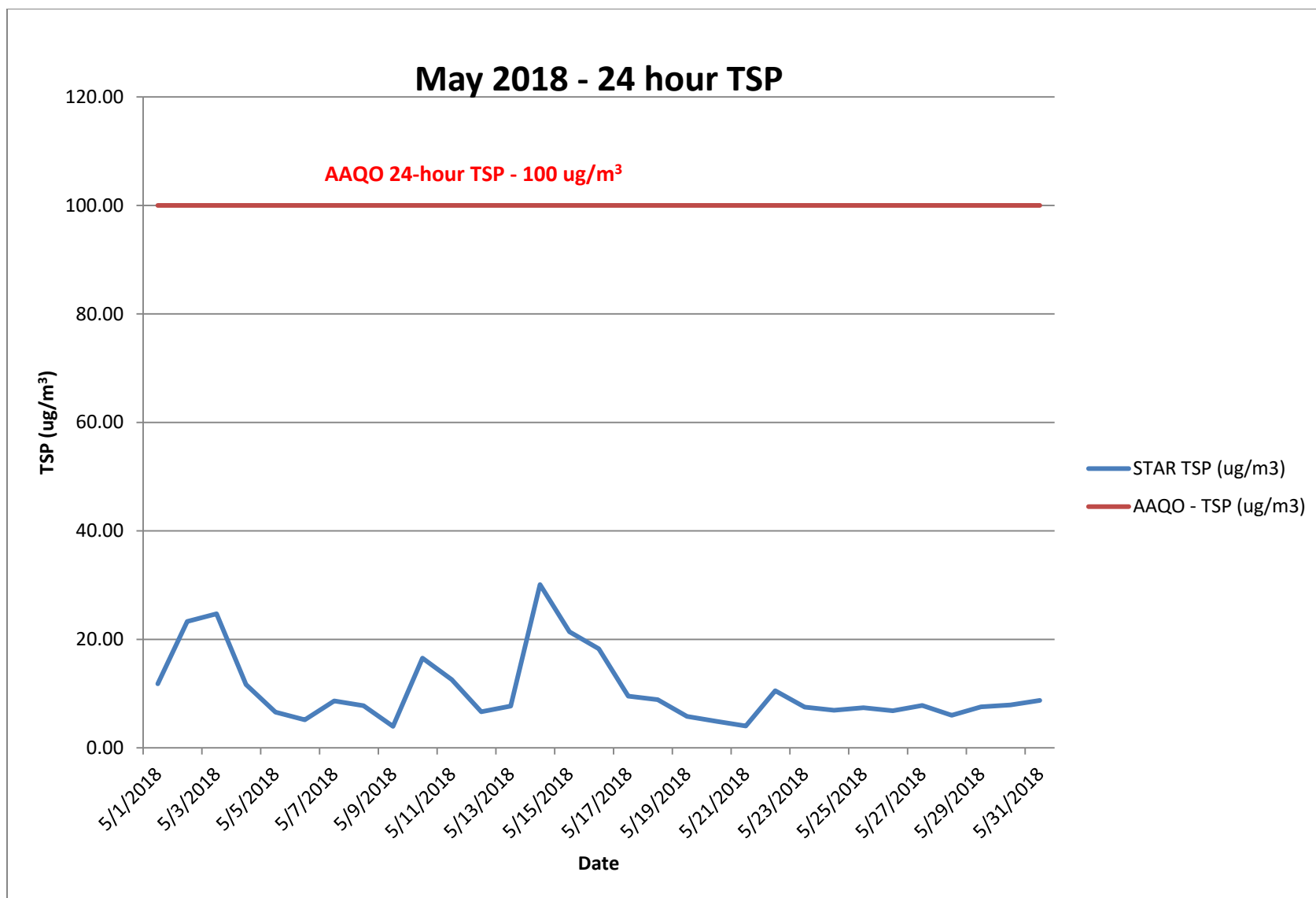


Figure-4: 24-hour concentrations of TSP at STAR

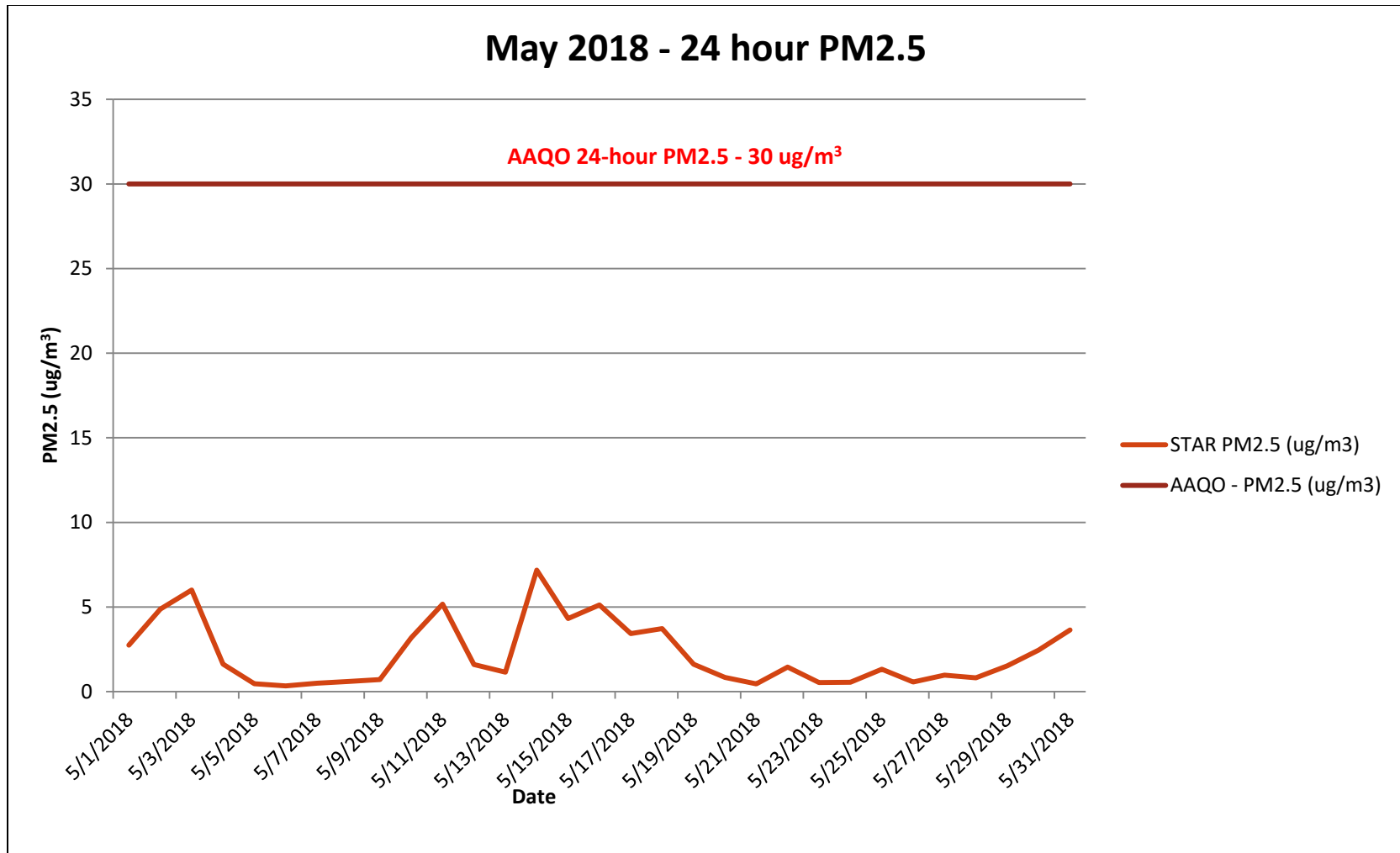


Figure -5: 24-hour concentrations of PM<sub>2.5</sub> at STAR

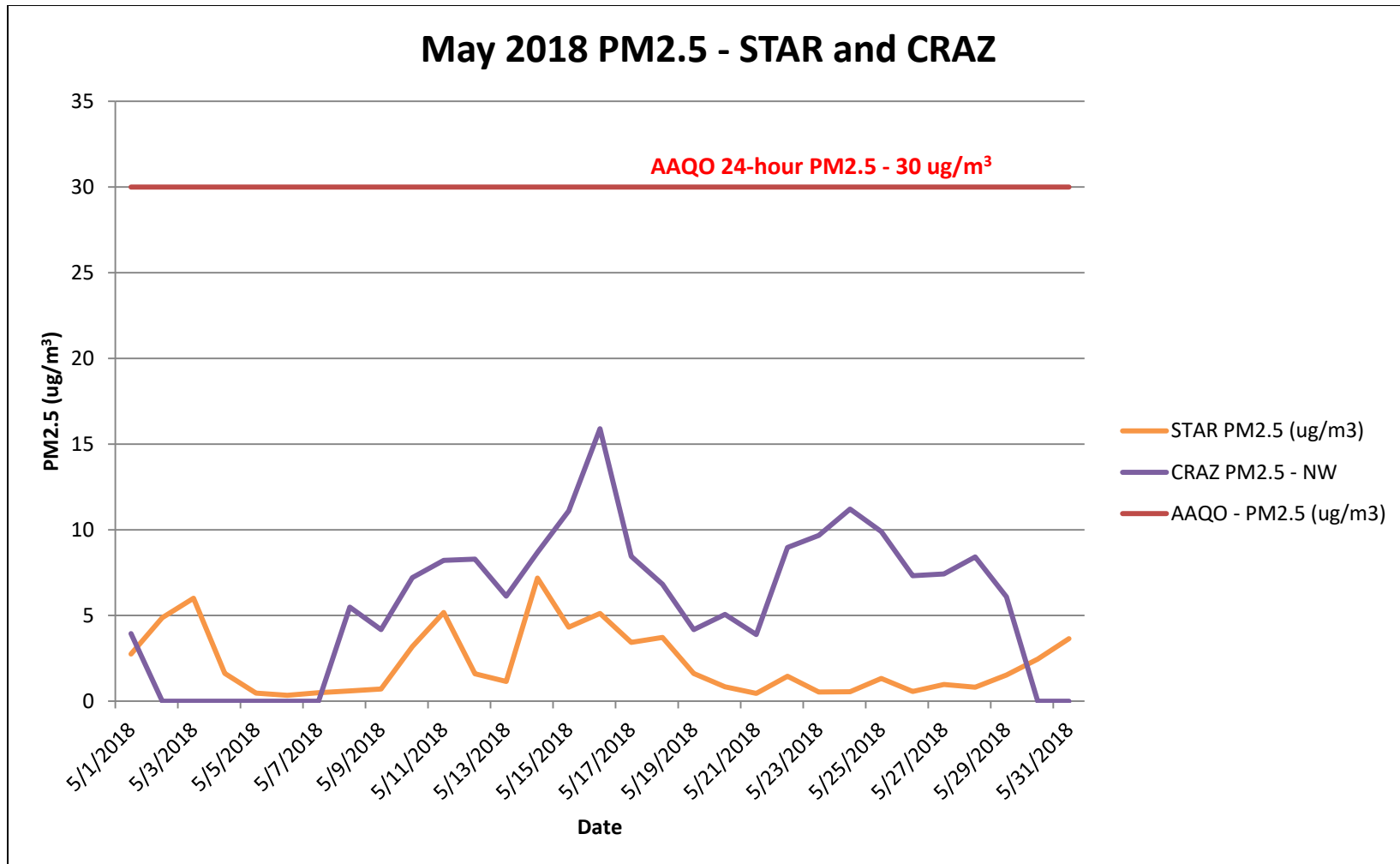


Figure 6-: CRAZ and BLV Comparison for PM2.5

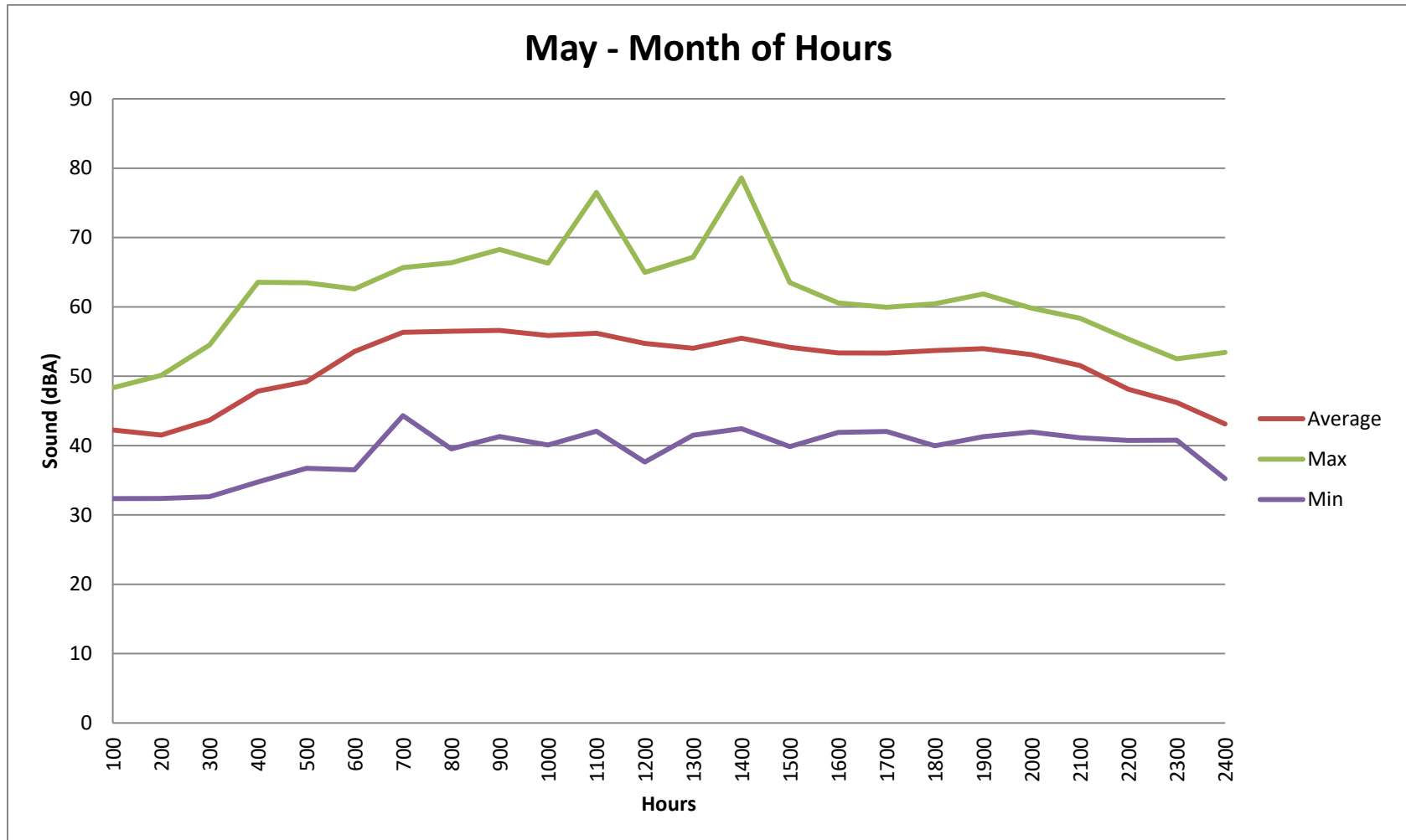


Figure 7-: Month of Hours sound levels at the STAR Pit