



August 22, 2008

Mr. Shawn Thurber
Lafarge Canada Inc.
10511, 15th St. S.E.
Calgary, Alberta
T2H 2H5

Re: **Noise Monitoring for Lafarge – Stoney Trail #2**

Dear Mr. Thurber;

Attached are results of the monitoring for the period July 1 - 31, 2008 for noise, TSP and PM2.5 particulate. A B&K model 2236 meter recorded noise levels. Met One E-BAM recorded TSP and PM2.5 particulate. Winds were measured with a R.M. Young Model 5103 anemometer. Precipitation was recorded with a Texas Instruments model TE25M rain gauge.

There were ten exceedances of the city of Calgary noise bylaw for Residential areas.

There were no exceedances of the objectives for PM2.5 and TSP particulate.

Please call if there are any questions regarding the results.

Yours truly,

PROMET ENVIRONMENTAL GROUP LTD.

A handwritten signature in black ink, appearing to read "Bill Murray". The signature is fluid and cursive, with a long horizontal stroke at the end.

Dr. William (Bill) Murray
President

WM/kt
Enc.

PROMET

MONTHLY REPORT SUMMARY

Stoney Trail #2

Lafarge Canada Inc.

Name/Location

Company

July 2008

Monitoring Period

Continuous Ambient Monitoring					
Parameter	% Time Operational	Average	Maximum	Limit	Number above Limit
Sound dB A (1)	100%	51	65 dB A	65 day 50 night	10
PM2.5 (day) $\mu\text{g}/\text{m}^3$	99%	4	10	30	0
PM2.5 (hour) $\mu\text{g}/\text{m}^3$	99%	25	76	80	0
TSP (day) $\mu\text{g}/\text{m}^3$	99%	4	50	100	0
TSP (hour) $\mu\text{g}/\text{m}^3$	99%	18	243	266 ¹	0
Wind km/h	100%	13	36		-
Precipitation mm	100%	42 ²	7 ³		-
Trailer Temperature	100%				-

Sound level is analyzed only for wind speed less than 11 km/h and precipitation less than 3 mm/hour

COMMENTS:

The noise limit for residential areas is 65 dB A for day time or 50 dB A for night-time. Sound Level must exceed 5 dB A Leq over the Ambient Sound Level before it becomes an offence.

The PM2.5 Objective is 30 $\mu\text{g}/\text{m}^3$ for a day and 80 $\mu\text{g}/\text{m}^3$ for an hour.

The TSP Objective is 100 $\mu\text{g}/\text{m}^3$ for a day.

¹There is no hourly objective for TSP. A project reference limit of 266 $\mu\text{g}/\text{m}^3$ is used.

²Monthly total precipitation.

³Maximum hourly precipitation amount.

SOUND LEVEL [dBA] Leq 1 hour
 Lafarge North America Inc.
 Stoney Trail Site 2
 STATION 633
 JUL 2008

Day	Hour																								Avg	
	1	2	3	4	5	6	7	8	9	10	11	12	13	14	15	16	17	18	19	20	21	22	23	24		
1	42.5	39.3	40.9								42.7	45.9						44.0	39.3	38.8	40.4	37.8	39.9	41.4		
2	41.0	38.6	41.7	41.5	49.1	49.7	52.8													48.3	47.3	42.1	41.8	46.1		
3	36.1	34.5	39.3		44.7	58.0	51.6	51.8	47.9		54.1	53.2										39.1	40.6	48.9		
4	45.8	48.0	45.0			47.0		47.8	52.1	56.1		53.4	50.0											36.5	49.5	
5			40.2	38.1							51.2	56.4				45.3	49.2		45.6	39.1				47.8		
6					40.0	45.7	42.1	40.6	43.0	41.8	51.8	43.3	45.1	46.1	48.0									45.0		
7			44.0	42.0	43.0	48.8	56.8	54.3	55.0	52.1	49.4	53.3	54.9						43.3	41.0	41.7	38.0	36.3	49.4		
8	36.0	35.6	39.2	40.3	45.3		52.9	50.4	53.0	49.7	49.4	52.8	51.8	55.6	55.0					41.0	41.5	38.6	40.7	48.4		
9	40.3	44.5	43.7	38.5	43.0	53.2	58.9					53.1								46.9		43.1		48.9		
10																50.8								50.8		
11																					46.5	41.0		44.2		
12											47.4	52.7		45.6	45.0				41.5	39.6	35.8	40.2	40.0	35.4	43.9	
13	34.7	31.4	32.5	33.0	41.5	46.6						45.4	47.7		46.8							47.2		42.0	42.8	
14	38.7			39.4	45.5	47.7	52.3	51.4	50.2							50.8	49.8	47.2		44.8	42.1	42.1	39.9	39.5	46.7	
15	38.5	38.4	38.1	39.2	41.9	47.9													48.1	44.7	42.7	42.9	44.7		43.2	
16		38.7	39.8	37.8	42.8	50.6	53.3	58.5	59.3	50.2		50.3							45.7	44.1	42.2	42.8	44.0	42.9	48.8	
17	41.7	42.3	45.4	48.5	44.8	51.1															45.3	45.1	43.7	42.7	44.3	45.4
18	44.9	43.3		39.9	44.6	50.0	54.4		53.6	54.2	59.7										53.9				51.8	
19		44.6			39.8							56.2	46.2	45.3		46.4							44.3		40.8	47.0
20	37.3	36.9		36.5		47.3	43.8		44.2	43.2	46.3	43.6	43.0	46.6	44.9	49.3									44.1	
21	40.0	41.0	40.3			53.1	59.2	59.9				63.0	51.4	58.5	54.9	57.9	52.3	51.2	42.1	43.3	43.3	44.3	42.3		53.1	
22																										0
23		43.3		40.7		47.9		54.5	53.4	51.4	57.5	52.0	60.6		57.8	52.5	55.8	48.2							53.5	
24					47.0	49.6	54.8	56.0				50.4	53.7	62.3	54.0	57.4		47.1	47.0		46.3		43.6	43.3	52.7	
25			43.1	40.0	44.4	51.9	59.3	55.0	53.2	55.0	53.1	53.0											46.3		52.1	
26								49.2	56.3	60.3	61.1	59.8	61.5	62.2	61.9				56.5						40.4	58.7
27	38.1					46.0		59.5	63.1	62.2	54.1	52.5	60.1	58.1	61.7					48.9	43.8	41.7	42.4	41.0	55.3	
28		39.1	37.8	45.3									64.8	64.5	61.9	59.4				51.6		45.4	47.3		42.3	55.9
29	44.3	39.8	44.3	42.3	47.9	61.7	61.4	60.0	60.4						62.0	63.1	55.3			58.0	45.8				56.6	
30			36.1	42.3	59.3				62.6																38.2	54.1
31	38.1	37.2	37.5	37.9	45.4	53.4	61.1	58.3	61.8	59.0		60.2	62.2						46.0	42.7	43.5	45.5	45.8	45.3	42.4	53.0
AVG	40.5	40.7	41.4	40.6	44.4	52.0	55.8	55.2	56.2	54.8	55.1	52.1	55.9	58.3	57.0	53.9	52.4	47.9	49.1	43.4	43.7	43.9	41.2	40.8		
MAX	45.8	48.0	45.4	48.5	49.1	61.7	61.4	60.0	63.1	62.2	63.0	59.8	64.8	64.5	62.0	63.1	55.8	53.9	58.0	46.9	48.3	47.3	45.3	44.3		
MIN	34.7	31.4	32.5	33.0	38.1	40.0	43.8	42.1	40.6	43.0	41.8	42.7	43.0	45.1	44.9	45.0	49.2	42.1	41.5	39.1	35.8	40.2	37.8	35.4		

*** SOUND DATA REPORTED ONLY FOR WIND SPEED < 11.5 KM/H ***

Percent of time operational: 100 M - missing data C - Calibration
 Monthly Average: 50.7 Monthly Maximum: 64.8 Monthly Minimum: 31.4
 Averages are computed only when time operational > 75%
 *** 10 Exceedances of Guideline***
 19 AUG 2008 1315

PM2.5 [ug/m3]
 Lafarge North America Inc.
 Stoney Trail Site 2
 STATION 633
 JUL 2008

Day	Hour																								Avg
	1	2	3	4	5	6	7	8	9	10	11	12	13	14	15	16	17	18	19	20	21	22	23	24	
1	5	6	5	7	6	7	7	9	6	4	5	7	4	7	6	4	5	5	6	6	8	7	8	7	6
2	9	12	12	10	16	14	9	9	7	7	3	3	2	5	4	6	5	6	5	5	7	8	7	12	8
3	13	6	12	8	6	7	9	8	8	8	8	8	5	0	0	3	6	7	8	7	6	7	7	7	7
4	6	8	5	6	5	5	5	6	8	10	7	6	4	0	0	2	2	4	5	4	6	4	75	3	8
5	6	4	5	2	5	3	2	3	3	2	3	1	2	4	3	2	0	3	4	6	8	5	3	2	3
6	2	2	1	0	3	10	8	5	5	2	0	3	0	2	2	2	13	2	3	3	1	1	1	0	3
7	1	1	1	1	0	0	5	3	1	0	1	1	3	5	5	6	5	5	2	2	3	2	4	2	2
8	3	4	3	5	6	6	4	5	7	7	6	4	10	7	7	9	10	7	8	7	12	8	7	6	7
9	4	6	6	7	10	11	10	11	11	6	10	2	1	14	25	12	10	7	5	6	7	10	10	8	9
10	5	2	5	3	3	1	2	3	2	2	2	3	3	1	2	1	1	0	0	0	0	0	1	1	2
11	0	0	0	1	1	0	0	0	4	0	0	1	6	1	1	0	1	1	1	1	1	3	2	1	1
12	0	1	1	0	0	1	0	0	0	0	2	1	1	1	0	0	0	0	1	2	5	7	4	2	1
13	2	3	2	0	1	2	2	3	2	2	1	2	2	2	1	0	0	0	2	4	7	5	2	1	2
14	0	1	1	0	1	1	2	0	0	6	4	4	2	3	1	3	2	1	1	0	2	1	3	1	2
15	1	1	1	2	3	2	2	3	4	4	3	2	3	3	2	3	3	1	1	2	1	3	5	1	2
16	1	1	1	2	2	2	7	3	2	1	3	1	1	1	2	2	1	2	0	1	1	3	4	2	2
17	2	3	2	2	3	3	2	3	1	1	3	3	1	0	1	0	0	1	0	3	7	4	3	2	2
18	1	3	4	1	2	2	10	2	4	2	4	1	3	1	2	5	2	3	3	3	1	1	2	1	3
19	1	1	3	1	1	1	1	0	0	2	2	0	0	0	0	0	0	0	0	2	4	6	7	4	2
20	4	2	3	3	3	2	2	2	2	2	2	0	0	0	0	2	3	2	2	2	3	3	4	3	2
21	3	4	37	M	4	3	3	2	2	0	0	0	1	4	2	4	5	6	7	11	9	11	7	7	6
22	8	7	8	5	7	7	6	6	4	5	6	5	3	3	4	3	4	3	3	3	6	7	3	0	5
23	2	2	1	1	1	2	7	1	3	3	2	0	1	0	2	1	2	1	3	1	2	4	2	2	2
24	1	0	0	2	3	0	0	1	1	1	2	1	3	2	1	1	0	0	11	3	6	4	3	2	2
25	4	3	3	2	3	2	3	3	3	2	4	2	2	0	0	0	0	0	2	3	6	7	8	10	3
26	4	4	4	2	3	2	2	2	3	4	2	10	15	15	2	7	10	12	13	10	8	7	M	6	6
27	8	8	6	7	6	4	4	5	6	7	2	0	0	4	7	M	5	8	6	3	4	3	3	2	5
28	3	2	2	1	1	0	2	3	2	2	1	1	6	3	0	0	0	0	0	2	8	7	4	4	2
29	5	4	5	4	3	3	3	9	0	3	2	2	0	1	0	0	36	5	7	10	16	18	26	76	10
30	M	14	16	9	7	33	11	5	1	1	0	0	3	6	1	4	10	2	2	2	4	3	4	2	6
31	1	3	2	3	2	22	1	4	3	2	0	1	1	1	1	1	0	0	0	1	30	31	15	6	6
AVG	4	4	5	3	4	5	4	4	3	3	3	2	3	3	3	3	5	3	4	4	6	6	8	6	
MAX	13	14	37	10	16	33	11	11	11	10	10	10	15	15	25	12	36	12	13	11	30	31	75	76	
MIN	0	0	0	0	0	0	0	0	0	0	0	0	0	0	0	0	0	0	0	0	0	0	1	0	

Percent of time operational: 99
 Monthly Average: 4 Monthly Maximum: 76 Monthly Minimum: 0
 M - missing data

TSP [ug/m3]
Lafarge North America Inc.
Stoney Trail Site 2
STATION 633
JUL 2008

Day	Hour																								Avg
	1	2	3	4	5	6	7	8	9	10	11	12	13	14	15	16	17	18	19	20	21	22	23	24	
1	20	21	27	36	30	32	43	44	31	28	33	42	25	29	21	23	18	28	24	30	28	34	35	36	30
2	40	48	60	67	54	36	39	47	32	33	12	14	16	19	26	18	20	27	35	23	34	42	38	46	34
3	57	M	45	36	44	32	39	28	40	42	39	41	46	42	62	43	34	30	31	44	36	32	24	40	39
4	26	34	29	27	33	18	26	24	52	56	36	38	33	29	44	26	26	9	13	16	15	11	10	23	27
5	12	15	12	13	11	13	15	12	4	24	17	13	34	25	19	28	23	16	10	10	7	7	4	8	15
6	8	10	5	1	18	111	74	32	65	10	5	3	5	36	19	1	138	6	8	11	5	2	4	1	24
7	2	4	3	1	4	2	46	19	27	11	4	24	9	58	14	18	14	16	10	13	16	14	19	12	15
8	15	11	14	21	24	27	27	18	42	27	30	25	51	43	50	38	50	35	36	40	36	24	21	25	30
9	22	24	26	29	37	45	62	61	46	22	23	12	11	125	243	100	45	33	29	47	37	46	45	33	50
10	22	8	7	9	12	5	10	27	21	5	43	17	14	3	5	5	5	2	2	2	7	9	2	3	10
11	3	4	1	1	1	1	2	2	8	5	2	6	2	2	1	2	2	2	4	4	1	2	7	1	2
12	4	2	4	12	4	3	5	4	3	6	10	3	4	5	5	4	4	2	5	1	4	2	1	5	4
13	4	9	5	4	5	3	4	22	9	9	6	10	7	12	16	9	15	8	12	8	6	4	3	4	8
14	2	1	2	1	6	4	8	7	11	92	32	28	22	31	8	10	11	5	6	6	6	10	10	17	14
15	6	10	13	18	32	9	11	10	19	19	10	8	26	14	8	10	15	6	16	8	8	4	4	4	12
16	7	5	7	7	10	22	25	14	7	6	21	5	7	5	6	20	1	10	3	4	5	14	6	21	10
17	15	10	4	8	12	17	11	18	12	8	14	10	11	9	19	11	6	8	9	7	3	6	5	5	10
18	4	7	6	4	9	2	43	7	9	10	21	5	11	3	9	14	6	5	6	8	2	4	5	3	8
19	9	8	9	6	4	4	4	4	4	6	5	6	2	4	5	1	5	5	1	4	5	10	10	4	5
20	6	8	11	8	15	8	8	10	10	8	5	6	8	16	8	14	8	8	48	21	21	13	13	10	12
21	12	18	15	14	22	12	13	10	7	10	10	11	11	16	17	16	23	26	27	49	52	47	31	30	21
22	48	37	25	22	21	28	42	41	19	31	48	73	14	12	17	33	50	12	16	14	22	30	16	4	28
23	8	8	4	6	4	11	15	23	10	13	13	13	6	6	6	6	7	2	8	3	4	9	7	6	8
24	4	9	4	6	9	4	3	6	4	1	3	5	5	9	7	8	5	6	60	17	11	6	10	10	9
25	11	11	7	13	12	6	14	8	18	16	19	46	12	11	5	11	8	11	7	10	6	9	12	8	12
26	13	18	9	11	11	8	9	12	13	14	20	44	90	70	47	26	40	44	62	40	24	27	21	24	29
27	23	31	25	25	27	19	21	23	26	31	19	16	19	18	13	M	44	17	7	10	9	10	14	11	20
28	7	7	14	3	4	6	32	15	32	23	7	4	44	15	1	3	6	5	5	6	10	12	13	21	12
29	19	17	16	12	16	15	12	40	10	21	10	7	26	12	12	14	M	30	13	20	39	44	50	48	22
30	51	49	35	38	30	177	29	14	11	7	11	6	6	11	13	32	76	11	8	7	2	7	8	9	27
31	6	6	6	8	10	5	8	12	32	14	7	5	13	5	4	10	2	1	5	13	57	37	27	23	13
AVG	16	15	15	15	17	22	23	20	20	20	17	18	19	22	24	18	23	14	17	16	17	17	15	16	
MAX	57	49	60	67	54	177	74	61	65	92	48	73	90	125	243	100	138	44	62	49	57	47	50	48	
MIN	2	1	1	1	1	1	2	2	3	1	2	3	2	2	1	1	1	1	1	1	1	2	1	1	

Percent of time operational: 100
Monthly Average: 18 Monthly Maximum: 243 Monthly Minimum: 1

M - missing data

ABSTRACT OF THE WIND
Lafarge North America Inc.
Stoney Trail Site 2
STATION 633
JUL 2008

HOUR DAY	ALL TIMES ARE L.S.T.																									SPEED [km/h]					ANEMOMETER HEIGHT 10 m								MEAN	MAX	PREV	MISS
	1	2	3	4	5	6	7	8	9	10	11	12	13	14	15	16	17	18	19	20	21	22	23	24	SPD	VEL	DIR	OBS														
1	N	NW	NNW	NNE	NNE	NNE	NNE	NNE	NNE	NNE	N	N	N	WSW	WSW	SW	SW	WSW	WSW	SW	SSW	SSW	SSW	S				NNE	0													
	6	7	7	12	13	15	17	16	23	15	14	9	6	13	19	15	13	12	6	5	8	6	7	6	11	23			0													
2	W	S	SE	S	SSE	S	S	SSW	S	SSW	SSW	SSW	SSW	S	S	S	S	S	S	S	S	S	S	S				S	0													
	5	5	8	10	9	7	11	13	19	18	22	31	23	25	22	24	19	13	14	12	10	10	11	10	14	31			0													
3	SSW	SSW	SW	SW	WSW	W	W	WSW	SSW	SW	SSW	S	SSE	S	SSE	S	SSE	S	S	S	S	S	SSW	N	NE				S	0												
	7	10	11	12	7	8	8	8	9	12	13	10	10	13	12	15	20	21	20	21	20	18	6	6	12	21			0													
4	WNW	WNW	WNW	NW	NNW	NW	NNW	WNW	SSW	SSE	SSW	W	WSW	W	SW	W	WSW	WSW	SW	WNW	WNW	WNW	NNW	NNW				WNW	0													
	8	9	10	19	13	10	12	10	11	9	12	13	9	9	12	13	16	21	15	23	23	18	15	11	13	23			0													
5	NNW	NNW	NW	NW	W	WNW	NW	WNW	WNW	NW	NNW	ENE	ESE	SE	SE	S	SSW	WSW	WSW	W	W	WNW	WNW	WNW				WNW	0													
	13	13	13	11	10	13	19	18	16	16	10	7	13	12	17	11	11	12	10	9	12	17	18	13	13	19			0													
6	WNW	WNW	WNW	WNW	NNE	NNW	N	NE	NNE	N	NNW	W	E	ESE	SSW	N	NNE	NE	NNE	NE	W	W	WNW	WNW				WNW	0													
	16	16	18	19	12	5	6	8	7	8	10	11	8	10	10	11	23	15	21	26	25	14	15	14	14	26			0													
7	WNW	W	WNW	WNW	WNW	NW	NNW	N	NNE	NE	ENE	ESE	SSE	SSE	NE	E	NE	NE	NE	NE	NNE	SSE	SW	WSW				NE	0													
	12	12	10	9	8	10	10	10	10	7	10	8	10	17	30	19	13	13	13	8	4	4	7	9	11	30			0													
8	WNW	NW	NNW	NW	N	N	N	NNE	ESE	SE	WSW	SW	SSW	S	S	W	W	WNW	WNW	W	WNW	NNW	NW	WNW				WNW	0													
	9	7	6	7	8	12	10	7	5	4	6	8	9	8	13	11	19	15	13	12	10	10	8	8	9	19			0													
9	NNE	NNW	SSW	SSW	S	SW	SW	SW	SW	WSW	W	W	N	NNE	NE	ENE	E	E	E	E	SE	SE	NE	NNE				SW	0													
	9	5	6	7	7	7	10	13	12	12	13	9	23	28	29	19	17	19	12	11	12	4	12	12	13	29			0													
10	NNE	NNE	NNE	NNE	N	NNE	NNE	N	N	NNE	NNE	N	NNE	NNE	NNE	NNW	N	NNW	N	N	N	N	N	N				NNE	0													
	15	25	22	20	15	21	13	14	13	17	14	16	18	22	24	21	10	14	19	17	24	21	16	20	18	25			0													
11	NNW	WNW	NW	NW	NW	NNW	NW	NW	N	NNW	N	NNW	WNW	NW	WNW	WNW	NW	WNW	NW	NNW	WNW	W	WNW	WNW				SVL	0													
	25	16	22	28	22	23	21	19	32	36	22	18	14	16	16	13	19	16	14	13	10	11	22	19	19	36			0													
12	WNW	WNW	NW	NW	WNW	WNW	WNW	WNW	NW	NW	WSW	SW	SW	WSW	S	S	SSW	SW	WSW	WNW	WNW	WNW	WNW	WNW				WNW	0													
	19	18	17	19	15	17	15	15	12	10	13	11	12	9	10	16	14	11	11	11	9	10	10	10	13	19			0													
13	W	W	WNW	W	WNW	W	WNW	N	NNE	ENE	ENE	E	ESE	E	E	E	E	E	ESE	NE	NNE	NNE	N	NNW				E	0													
	11	11	10	10	11	10	12	23	19	15	12	9	11	12	13	10	12	14	12	16	20	11	15	10	13	23			0													
14	WNW	NNW	N	NNW	WSW	SW	WSW	SW	NE	NNE	NNE	NNE	NE	NNE	NE	ENE	ENE	E	E	E	ESE	SE	SE	SSE				NNE	0													
	7	13	12	10	6	7	8	9	11	27	27	22	16	13	12	9	9	11	12	10	9	9	9	8	12	27			0													
15	S	SSW	SSW	S	SSE	SSE	SSE	SSE	S	S	SSE	S	S	SSE	N	E	ESE	NE	NE	SSW	WNW	NW	NNE				SSE	0														
	10	11	11	10	10	7	12	12	12	17	23	15	20	16	18	27	15	8	11	9	6	9	12	16	13	27			0													
16	N	SSW	NNW	SSW	E	N	NE	NE	NNE	N	NNE	NNE	NNE	NE	NE	NNE	NNE	NE	NE	ENE	E	S	SSW	SW				SVL	0													
	13	10	8	6	4	7	7	9	10	8	12	10	13	14	18	22	14	10	11	8	5	4	7	7	10	22			0													
17	SW	SW	SSW	SW	WSW	SW	SW	SW	SSW	S	S	SSE	S	SSE	SSE	SSE	SSE	S	S	WSW	NNE	NNE	NE				SVL	0														
	5	7	9	7	5	9	12	16	20	19	15	14	16	19	22	23	20	20	19	9	11	11	11	8	14	23			0													
18	NW	SE	W	N	WNW	NW	NNW	N	NNE	SSE	SE	E	NNE	ENE	E	N	NNE	WNW	W	W	WSW	WNW	W	WNW				SVL	0													
	11	9	12	10	8	11	8	14	9	10	11	14	15	15	17	16	13	11	13	14	15	17	15	12	12	17			0													
19	WNW	NW	WNW	WNW	WNW	WNW	WNW	WNW	NW	N	NW	WNW	SW	WSW	SSW	SSW	SW	S	S	S	SSW	SSW	SSW	SSW				WNW	0													
	13	11	13	15	11	15	16	19	16	17	11	6	10	14	8	14	17	14	16	14	11	13	13	10	13	19			0													
20	W	W	WNW	WNW	W	WNW	WNW	WNW	W	WNW	NW	N	NNE	E	SSE	SSW	S	S	S	S	S	S	S	SSW	SSW				SVL	0												
	10	11	12	11	13	11	10	13	10	7	7	7	5	8	9	15	16	17	16	19	14	14	13	13	11	19			0													
21	SW	WSW	WSW	WNW	WNW	WNW	WNW	W	W	WNW	W	W	SW	S	S	SSW	SSW	SSW	SSE	S	W	NNW	NNW				SVL	0														
	11	9	8	13	12	10	11	9	14	14	10	8	10	10	11	8	11	7	7	10	9	8	20	22	11	22			0													
22	N	N	N	N	N	N	N	NNE	N	N	NNE	NNE	NNE	NNE	NNE	NNE	NNE	NE	NNE	NNE	N	N	N	N				N	0													
	18	22	22	20	19	24	28	33	33	27	25	28	24	20	19	15	19	19	21	25	21	21	23	28	23	33			0													
23	NNW	N	NNW	NW	N	N	N	NNE	NE	ENE	ENE	ENE	NNE	NE	ENE	SSE	W	WSW	WSW	NNW	N	NNW	N	NNW				N	0													
	16	11	12	10	13	11	12	10	10	6	6	8	6	13	7	10	11	9	12	19	18	22	20	15	12	22			0													
24	NW	WNW	NW	N	E	WNW	W	W	WSW	WSW	WSW	W	NW	N	N	NE	E	E	ESE	SE	S	S	S	S				S	0													
	14	14	15	12	7	7	9	10	12	15	13	9	10	8	9	11	13	9	9	13	11	13	11	11	11	15			0													
25	SSW	SW	SSW	SW	W	NNW	W	W	W	S	SSE	SSE	SSE	SSE	SSE	SSE	S	S	S	S	S	S	S	S				SSE	0													
	15	15	11	7	7	5	7	7	5	7	7	9	18	18	15	15	21	19	18	16	14	10	13	15	12	21			0													
26	SSW	SSW	S	SSW	SW	WSW	SW	W	W	W	W	WNW	WSW	W	SSW	SSW	ENE	NNE	NE	N	NNW	NNW	W	NW				W	0													
	14	16	14	15	15	14	14	6	9	8	8	10	7	7	7	14	15	20	10	12	22	18	17	10	13	22			0													
27	WNW	WSW	SW	W	NNW	NNW	NNW	WNW	N	N	SW	NNW	S	WNW	ENE	NE	NE	N	N	NW	WSW	W	W	WSW				SVL	0													
	11	15	12	14	14	11	12	8	6	4	10	6	9	9	9	14	17	28	7	10	10	10	11	13	11	28			0													
28	WSW	SW	N	NW	NW	NNW	NNW	N	NNE	N	N	NNE	NNE	N	SW	SSE	SSW	SSW	S	S	S	S	S	S				S	0													
	12	11	7	11	14	12	12	18	21	15	16	13	9	6	8	7	12	12	11	14	11	11	12	8	12	21			0													
29	S	S	WSW	W	WNW	W	WNW	W	WSW	SSW	S	S	SSE	SSW	S	S	N	ENE	ENE	NNW	WNW	WNW	W	WNW				S	0													
	4	5	7	10	9	11	7	8	10	13	13	12	12	12	9	10	7	13	8	6	18	23	19	19	11	23			0													
30	WNW	W	W	W	SW	SW	WNW	W	WNW	W	W	W	WNW	W	W	WNW	NNE	NW	WNW	W	WNW	WNW	WNW	WNW				SVL	0													
	16	12	12	10	10	5	12	20	11	20	21	26	13	30	29	29	21	15	22	17	16	17	12	11	17	30			0													
31	WNW	WNW	WNW	WNW	WSW	W	W	WSW	WSW	SSW	SSW	SSW	SW	S	S	S	S	SSW	S	SE	SE	SSE	S	SSW				S	0													
	10	10	7	10	11	10	9	10	10	11	13	13	9	9	16	15	12	11	10	11	7	6	7	7	10	16			0													

MEAN
SPEED 12 12 12 12 11 11 12 13 14 14 13 13 13 14 15 15 15 15 15 13 13 14 13 13 12 13 36 WNW 0

NOTE: Missing data represented by M; no clear prevailing direction represented

FREQUENCY DISTRIBUTION OF WIND SPEED AND DIRECTION
 Lafarge North America Inc.
 Stoney Trail Site 2
 STATION 633
 JUL 2008

SPEED [km/h]	WIND DIRECTION																TOTAL	PCT
	N	NNE	NE	ENE	E	ESE	SE	SSE	S	SSW	SW	WSW	W	WNW	NW	NNW		
< .5																	0	0
1- 5	1	1	0	0	3	1	2	1	4	0	3	1	2	0	0	3	22	3
6- 11	27	16	16	10	9	7	8	16	37	28	24	27	43	48	20	14	350	47
12- 19	23	25	13	5	11	1	3	15	35	22	16	13	20	46	16	17	281	38
20- 28	19	24	2	0	0	0	0	4	10	3	0	1	4	5	4	6	82	11
29- 38	2	1	1	0	0	0	0	0	0	1	0	0	2	1	0	1	9	1
TOTAL	72	67	32	15	23	9	13	36	86	54	43	42	71	100	40	41	744	100
PERCENT	10	9	4	2	3	1	2	5	12	7	6	6	10	13	5	6		
AVERAGE	15	17	13	11	11	9	10	13	13	12	11	11	12	13	14	14	13	

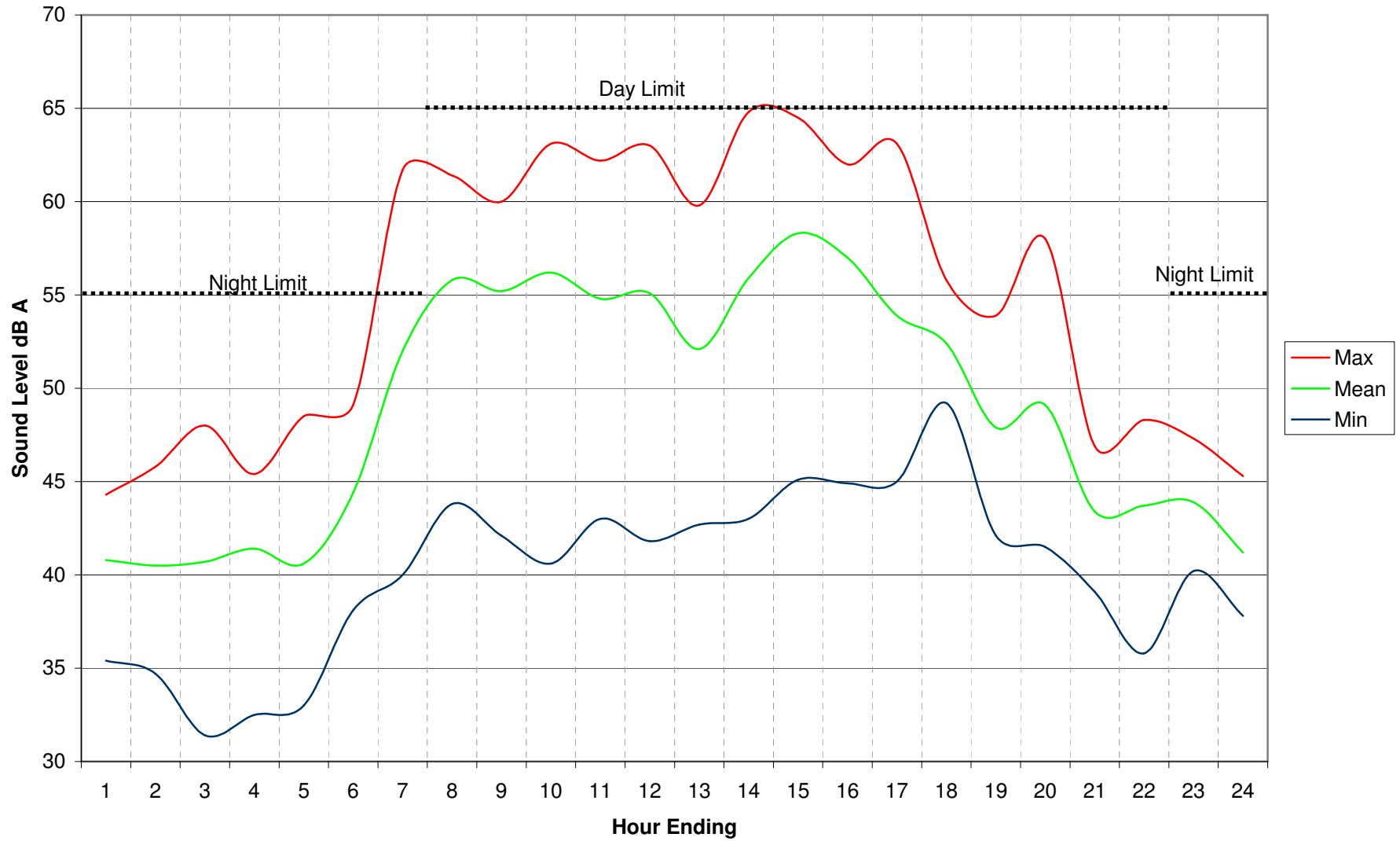
19 AUG 2008 1218

PRECIPITATION [mm]
 Lafarge North America Inc.
 Stoney Trail Site 2
 STATION 633
 JUL 2008

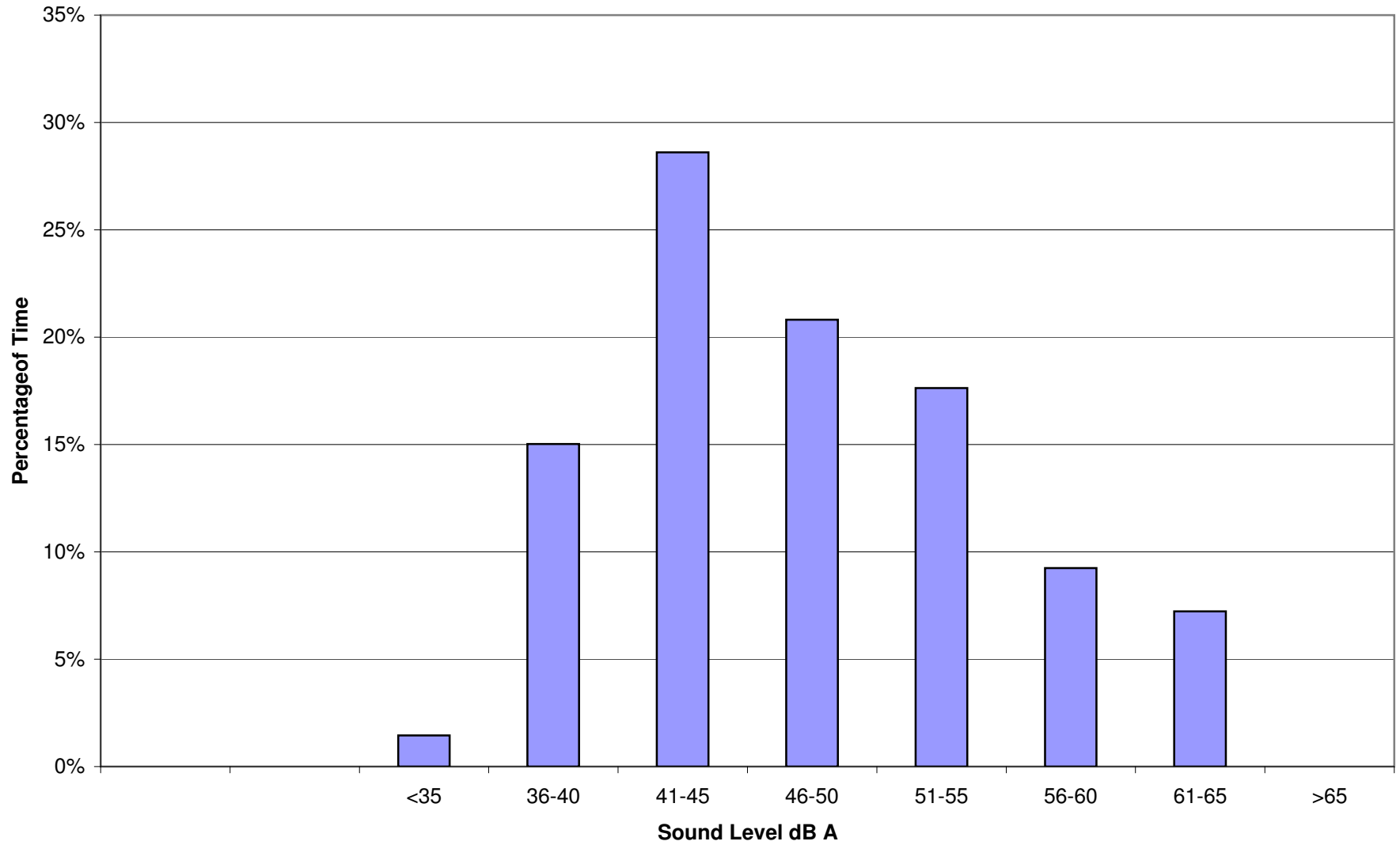
Day	Hour																								Tot	
	1	2	3	4	5	6	7	8	9	10	11	12	13	14	15	16	17	18	19	20	21	22	23	24		
1	0	0	0	0	0	0	0	0	0	0	0	0	0	0	0	0	0	0	0	0	0	0	0	0	0	0
2	0	0	0	0	0	0	0	0	0	0	0	0	0	0	0	0	0	0	0	0	0	0	0	0	0	0
3	0	0	0	0	0	0	0	0	0	0	0	0	0	0	0	0	0	0	0	0	0	0	0	0	0	0
4	0	0	0	0	0	0	0	0	0	0	0	0	0	0	0	0	0	0	0	0	0	0	0	0	0	0
5	0	0	0	0	0	0	0	0	0	0	0	0	0	0	0	0	0	0	0	0	0	0	0	0	0	0
6	0	0	0	0	0	0	0	0	0	0	0	0	0	0	0	0	0	0	0	0	0	2	2	0	0	4
7	0	0	0	0	0	0	0	0	0	0	0	0	0	0	7	0	0	0	0	0	0	0	0	0	0	7
8	0	0	0	0	0	0	0	0	0	0	0	0	0	0	0	0	0	0	0	0	0	0	0	0	0	0
9	0	0	0	0	0	0	0	0	0	0	0	0	0	0	0	0	0	0	0	0	0	0	0	0	0	0
10	0	0	0	0	0	0	0	0	0	0	0	0	0	0	1	4	0	0	0	0	1	0	0	0	1	9
11	0	0	0	0	0	0	0	0	0	0	0	0	0	0	0	0	0	0	0	0	0	0	0	0	0	0
12	0	0	0	0	0	0	0	0	0	0	0	0	0	0	0	0	0	0	0	0	0	0	0	0	0	0
13	0	0	0	0	0	0	0	0	0	0	0	0	0	0	0	0	0	0	0	0	0	0	0	0	0	0
14	0	0	0	0	0	0	0	0	0	0	0	0	0	0	0	0	0	0	0	0	0	0	0	0	0	0
15	0	0	1	0	0	0	0	0	0	0	0	0	0	0	0	0	0	0	0	0	0	0	0	0	0	2
16	0	0	0	0	0	0	0	0	0	0	0	0	0	0	0	0	0	0	0	0	0	0	0	0	0	0
17	0	0	0	0	0	0	0	0	0	0	0	0	0	0	0	0	0	0	0	0	0	0	0	0	0	0
18	0	1	0	0	0	0	0	0	0	0	0	0	0	4	0	0	0	0	0	0	0	0	0	0	0	7
19	0	0	0	0	0	0	0	0	0	0	0	0	0	0	0	0	0	0	0	0	0	0	0	0	0	0
20	0	0	0	0	0	0	0	0	0	0	0	0	0	0	0	0	0	0	0	0	0	0	0	0	0	0
21	0	0	0	0	0	0	0	0	0	0	0	0	0	0	0	0	0	0	0	0	0	0	0	0	0	0
22	0	0	0	0	0	0	0	0	1	0	0	0	0	0	0	0	0	0	0	0	0	0	0	0	0	2
23	0	0	0	0	0	0	0	0	0	0	0	0	0	0	0	0	0	0	0	0	1	1	1	0	0	3
24	0	0	0	1	2	0	0	0	0	0	0	0	0	0	0	0	0	0	0	0	0	0	0	0	0	4
25	0	0	0	0	0	0	0	0	0	0	0	0	0	0	0	0	0	0	0	0	0	0	0	0	0	0
26	0	0	0	0	0	0	0	0	0	0	0	0	0	0	0	0	0	0	0	0	0	0	0	0	0	0
27	0	0	0	0	0	0	0	0	0	0	0	0	0	0	0	0	0	1	1	0	0	0	0	0	0	3
28	0	0	0	0	0	0	0	0	0	0	0	0	0	0	0	0	0	0	0	0	0	0	0	0	0	0
29	0	0	0	0	0	0	0	0	0	0	0	0	0	0	0	0	0	0	0	0	0	0	0	0	0	0
30	0	0	0	0	0	0	0	0	0	0	0	0	0	0	0	0	0	0	0	0	0	0	0	0	0	0
31	0	0	0	0	0	0	0	0	0	0	0	0	0	0	0	0	0	0	0	0	0	0	0	0	0	0
TOTL	0	2	1	2	2	0	0	0	1	0	0	0	0	5	9	4	0	2	1	4	4	2	1	2	1	2
MAX	0	1	1	1	2	0	0	0	1	0	0	0	0	4	7	4	0	1	1	2	2	1	0	1	1	

Percent of time operational: 100
 Monthly Total: 42 Maximum in an hour: 7
 Year to Date: 45

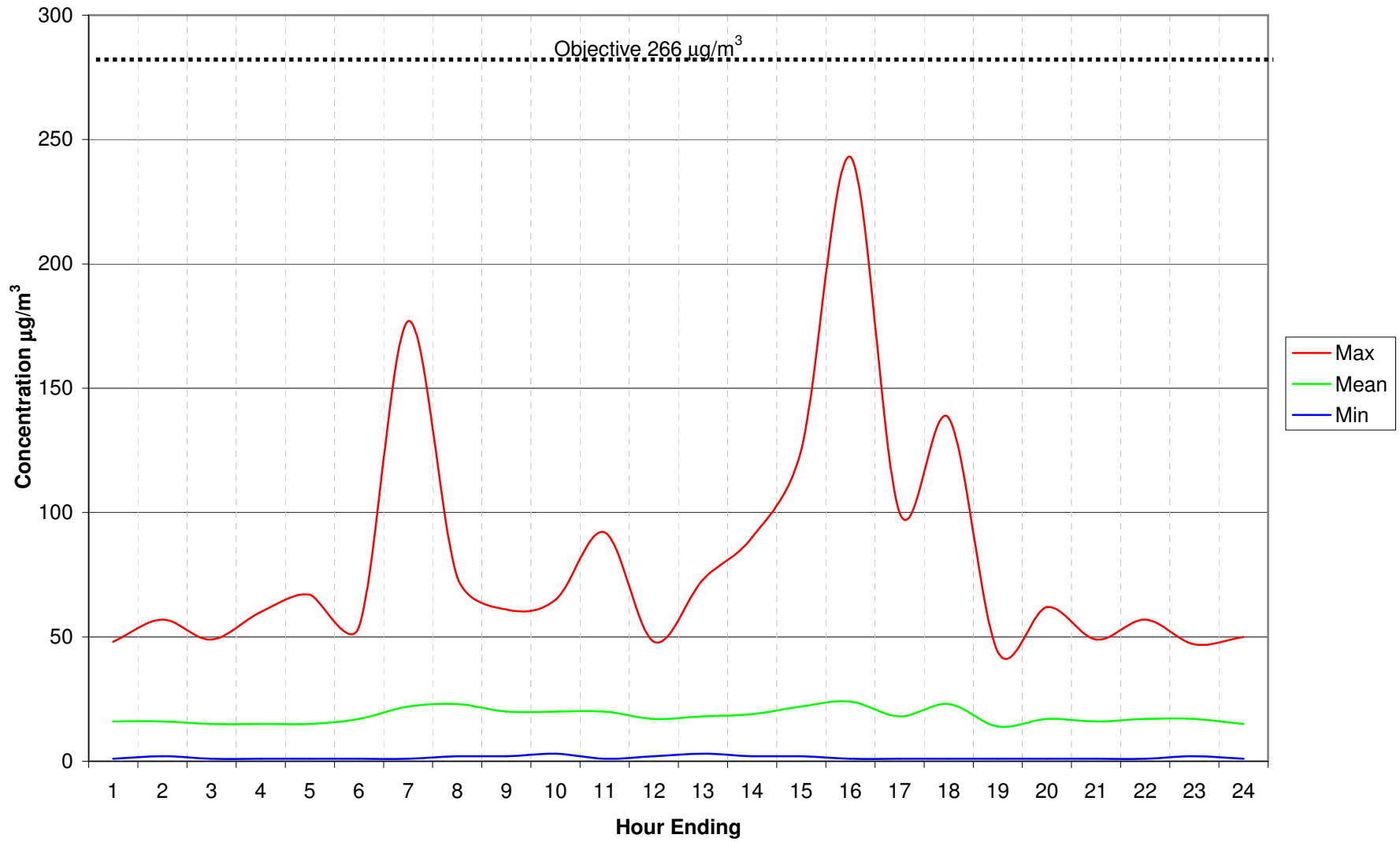
Sound Level by Hour of the Day



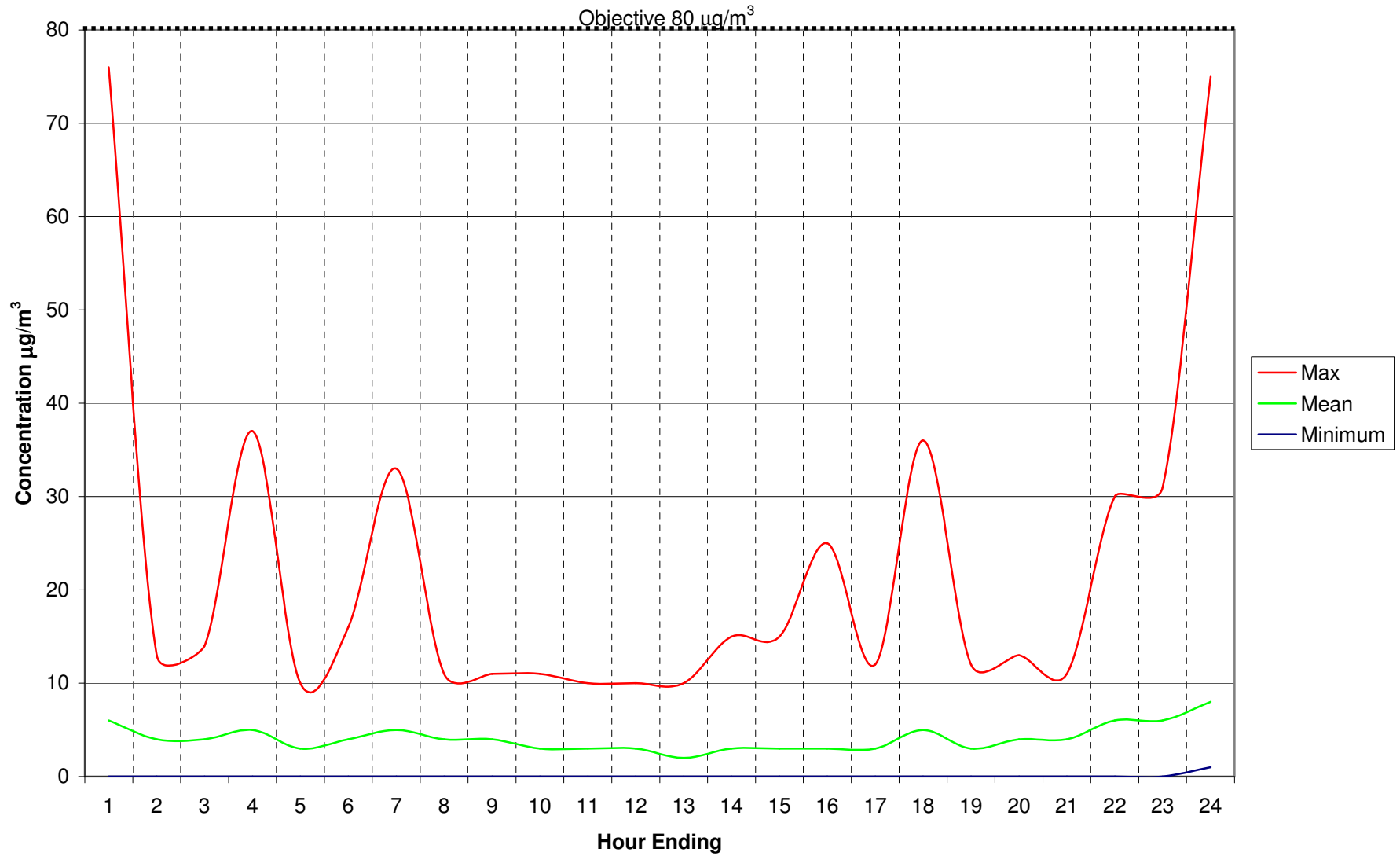
Sound Level Frequency



TSP by Hour



PM2.5 by Hour of the Day



Wind rose for JUL 2008
Stoney Trail Site 2

Bar length is proportional to frequency of winds from its direction

